

Write your name here

Surname

Other names

**Pearson Edexcel**  
**International GCSE**

Centre Number

--	--	--	--	--	--

Candidate Number

--	--	--	--	--	--

# Further Pure Mathematics

## Paper 1

Friday 13 January 2017 – Morning  
**Time: 2 hours**

Paper Reference

**4PM0/01****Calculators may be used.**

Total Marks

### Instructions

- Use **black** ink or ball-point pen.
- **Fill in the boxes** at the top of this page with your name, centre number and candidate number.
- Answer **all** questions.
- Without sufficient working, correct answers may be awarded no marks.
- Answer the questions in the spaces provided  
– *there may be more space than you need.*

### Information

- The total mark for this paper is 100.
- The marks for **each** question are shown in brackets  
– *use this as a guide as to how much time to spend on each question.*

### Advice

- Read each question carefully before you start to answer it.
- Check your answers if you have time at the end.

Turn over ►

P47878A

©2017 Pearson Education Ltd.

1/1/1/1/



Pearson

Answer all ELEVEN questions.

Write your answers in the spaces provided.

You must write down all the stages in your working.

1

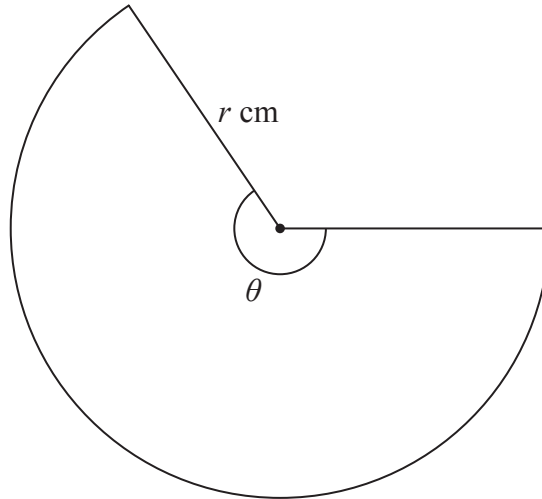


Diagram NOT accurately drawn

Figure 1

Figure 1 shows a sector of a circle. The circle has radius  $r$  cm and the sector has angle  $\theta$  radians. The sector has an arc length of  $18\pi$  cm and an area of  $126\pi$  cm<sup>2</sup>.

Find

- (i) the value of  $r$ ,
- (ii) the exact value of  $\theta$ .

(5)

.....

.....

.....

.....

.....

.....

.....

.....

.....

.....

.....

2



DO NOT WRITE IN THIS AREA

DO NOT WRITE IN THIS AREA

DO NOT WRITE IN THIS AREA

**Question 1 continued**

DO NOT WRITE IN THIS AREA

DO NOT WRITE IN THIS AREA

DO NOT WRITE IN THIS AREA

Area with horizontal dotted lines for writing.

**(Total for Question 1 is 5 marks)**





**Question 2 continued**

DO NOT WRITE IN THIS AREA

DO NOT WRITE IN THIS AREA

DO NOT WRITE IN THIS AREA

Handwriting practice area with 25 horizontal dotted lines.



**Question 2 continued**

Area with horizontal dotted lines for writing.

DO NOT WRITE IN THIS AREA

DO NOT WRITE IN THIS AREA

DO NOT WRITE IN THIS AREA

**(Total for Question 2 is 9 marks)**



3 Use algebra to find the set of values of  $x$  for which  $(3x - 1)(x - 1) < 2(3x - 1)$

(5)

DO NOT WRITE IN THIS AREA

DO NOT WRITE IN THIS AREA

DO NOT WRITE IN THIS AREA

Dotted lines for writing the solution.

(Total for Question 3 is 5 marks)



4 The  $n$ th term of a geometric series is  $t_n$  and the common ratio is  $r$ .

Given that  $t_2 + t_5 = \frac{28}{81}$  and  $t_2 - t_5 = \frac{76}{405}$

(a) (i) show that  $r = \frac{2}{3}$

(ii) find the first term of the series. (6)

(b) Find the sum to infinity of this geometric series. (2)

Area with horizontal dotted lines for writing answers.

DO NOT WRITE IN THIS AREA

DO NOT WRITE IN THIS AREA

DO NOT WRITE IN THIS AREA





**Question 4 continued**

DO NOT WRITE IN THIS AREA

DO NOT WRITE IN THIS AREA

DO NOT WRITE IN THIS AREA

Area with horizontal dotted lines for writing.

**(Total for Question 4 is 8 marks)**



5

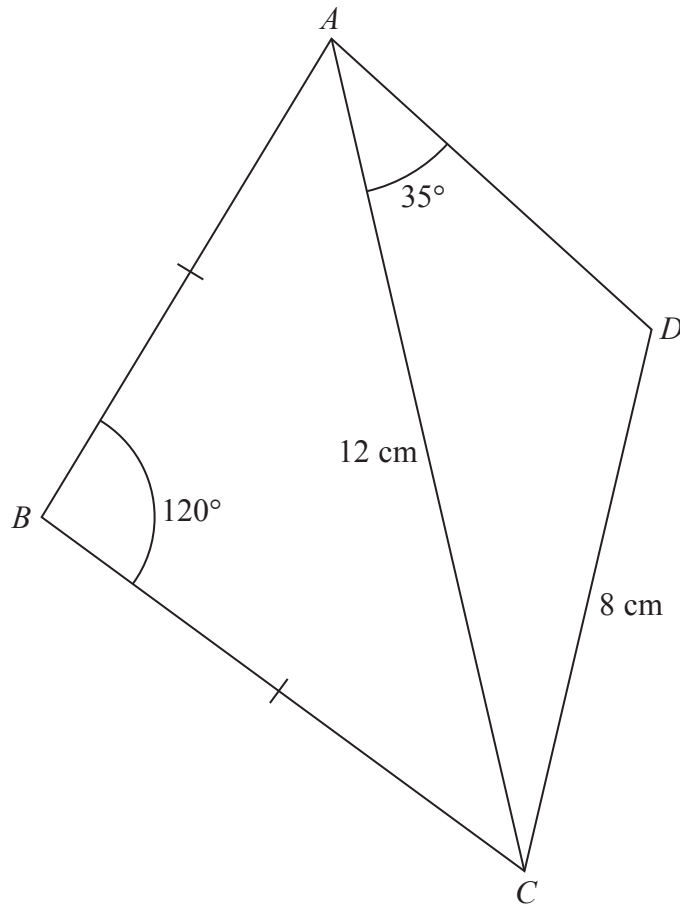


Diagram NOT accurately drawn

Figure 2

Figure 2 shows the quadrilateral  $ABCD$  in which  $AB = BC$ .

$DC = 8 \text{ cm}$     $AC = 12 \text{ cm}$     $\angle ABC = 120^\circ$     $\angle CAD = 35^\circ$

Find

(a) the exact length, in cm, of  $AB$ . (2)

Given that angle  $ADC$  is obtuse, find

(b) the size, in degrees to 1 decimal place, of angle  $ADC$ , (3)

(c) the area, in  $\text{cm}^2$  to 3 significant figures, of the quadrilateral  $ABCD$ . (6)

.....

.....

.....

.....

.....

DO NOT WRITE IN THIS AREA

DO NOT WRITE IN THIS AREA

DO NOT WRITE IN THIS AREA



**Question 5 continued**

DO NOT WRITE IN THIS AREA

DO NOT WRITE IN THIS AREA

DO NOT WRITE IN THIS AREA

Handwriting practice area with 25 horizontal dotted lines.



P 4 7 8 7 8 A 0 1 1 3 6

Question 5 continued

Handwriting practice area with 25 horizontal dotted lines.

DO NOT WRITE IN THIS AREA

DO NOT WRITE IN THIS AREA

DO NOT WRITE IN THIS AREA



**Question 5 continued**

DO NOT WRITE IN THIS AREA

DO NOT WRITE IN THIS AREA

DO NOT WRITE IN THIS AREA

Area with horizontal dotted lines for writing.

**(Total for Question 5 is 11 marks)**



P 4 7 8 7 8 A 0 1 3 3 6

6

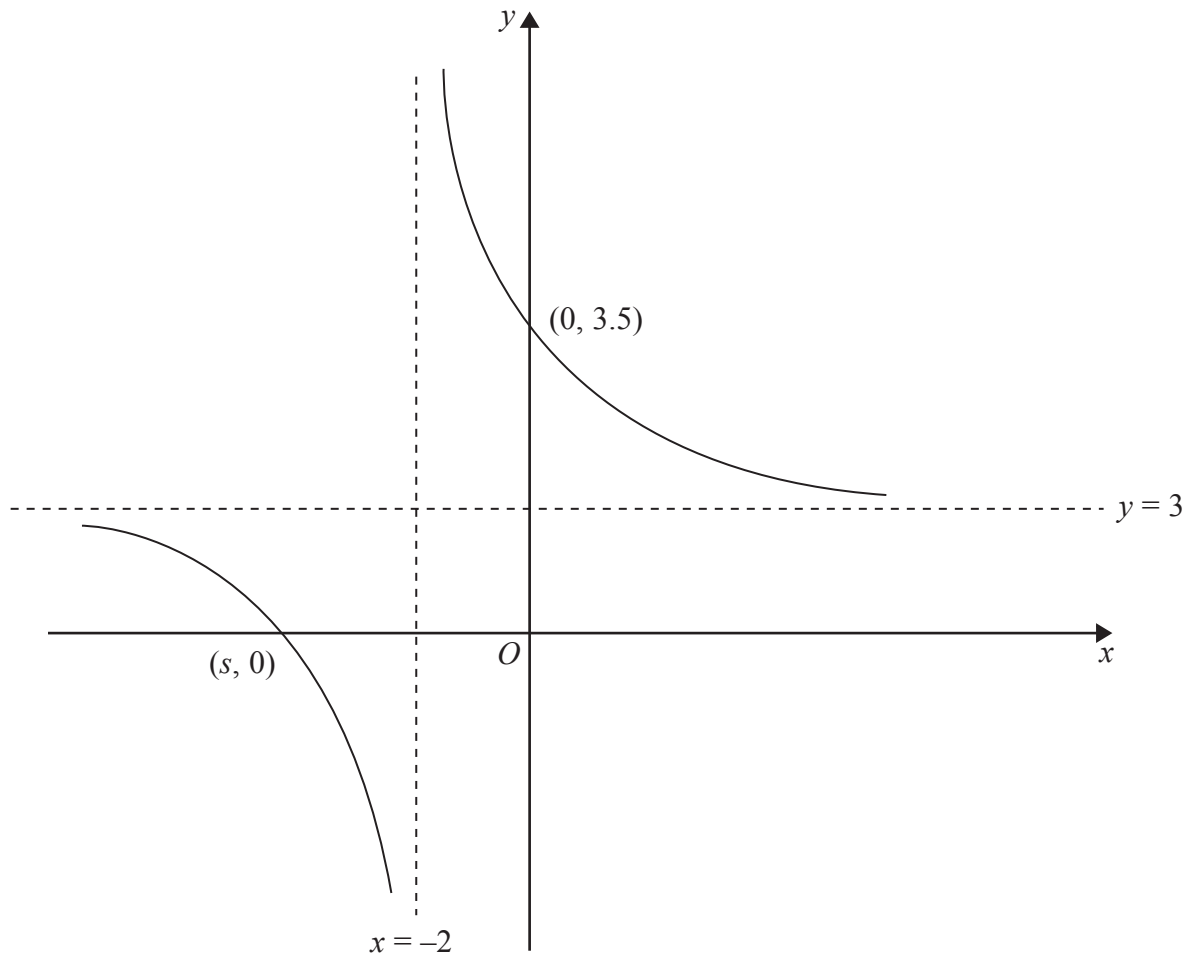


Figure 3

Figure 3 shows a sketch of the curve with equation

$$y = \frac{bx + c}{x + a} \quad x \neq -a,$$

where  $a$ ,  $b$  and  $c$  are integers.

The equations of the asymptotes to the curve are  $x = -2$  and  $y = 3$

The curve crosses the  $y$ -axis at  $(0, 3.5)$

(a) Write down the value of  $a$  and the value of  $b$ . (2)

(b) Find the value of  $c$ . (2)

Given that the curve crosses the  $x$ -axis at  $(s, 0)$

(c) find the value of  $s$ . (2)



**Question 6 continued**

DO NOT WRITE IN THIS AREA

DO NOT WRITE IN THIS AREA

DO NOT WRITE IN THIS AREA

Area with horizontal dotted lines for writing.

**(Total for Question 6 is 6 marks)**



P 4 7 8 7 8 A 0 1 5 3 6

7 (a) Complete the table of values for  $y = \ln(5x + 1) + 2$  giving your answers to 2 decimal places.

$x$	0	1	2	3	4	5	6	7
$y$	2		4.40	4.77	5.04		5.43	

(2)

(b) On the grid opposite draw the graph of  $y = \ln(5x + 1) + 2$  for  $0 \leq x \leq 7$

(2)

(c) By drawing an appropriate straight line on the grid, obtain an estimate, to 1 decimal place, of the positive root of the equation  $\ln(5x + 1) - x = 0$  in the interval  $0 \leq x \leq 7$

(3)

(d) By drawing an appropriate straight line on the grid, obtain an estimate, to 1 decimal place, of the root of the equation  $e^{(3x-1)} = 5x + 1$  in the interval  $0 \leq x \leq 7$

(4)

DO NOT WRITE IN THIS AREA

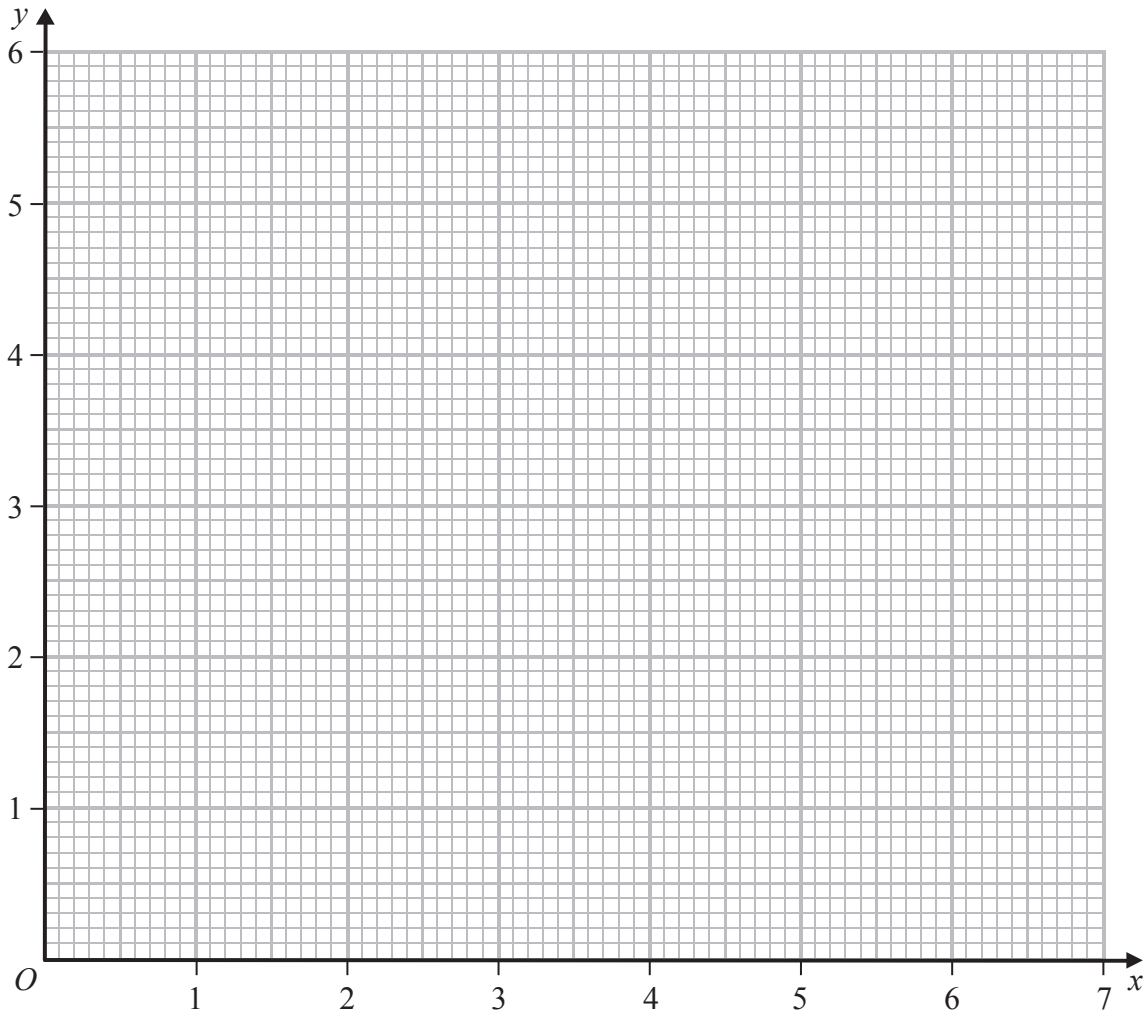
DO NOT WRITE IN THIS AREA

DO NOT WRITE IN THIS AREA





Question 7 continued



DO NOT WRITE IN THIS AREA

DO NOT WRITE IN THIS AREA

DO NOT WRITE IN THIS AREA

.....

.....

.....

.....

.....

.....

.....

.....

.....

.....

Turn over for a spare grid if you need to redraw your graph



Question 7 continued

Handwriting practice area consisting of 25 horizontal dotted lines.

DO NOT WRITE IN THIS AREA

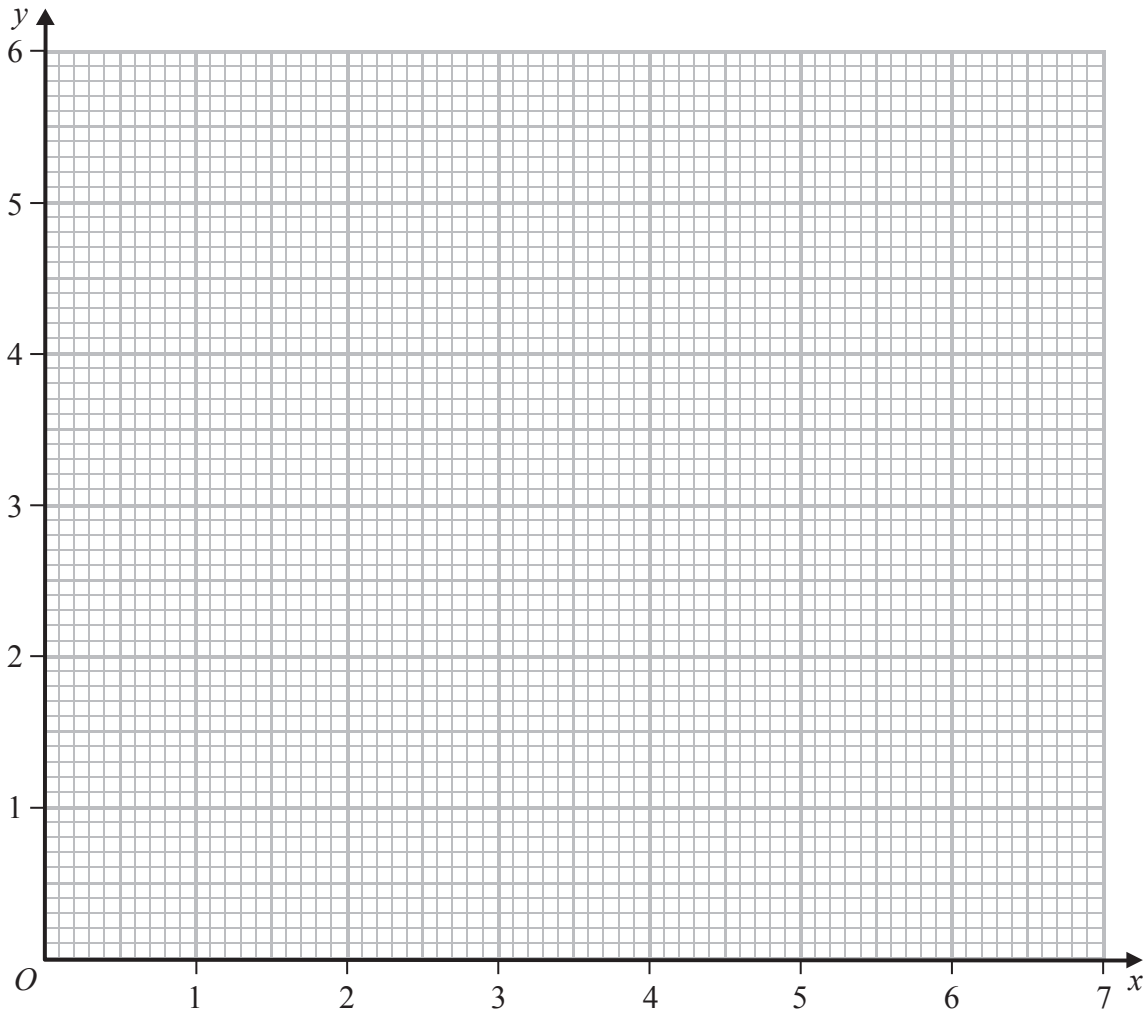
DO NOT WRITE IN THIS AREA

DO NOT WRITE IN THIS AREA



Question 7 continued

Only use this grid if you need to redraw your graph



DO NOT WRITE IN THIS AREA

DO NOT WRITE IN THIS AREA

DO NOT WRITE IN THIS AREA

.....

.....

.....

.....

.....

.....

.....

.....

.....

(Total for Question 7 is 11 marks)



- 8 (a) (i) Expand  $\left(1 + \frac{x}{2}\right)^{-3}$  in ascending powers of  $x$  up to and including the term in  $x^3$ , expressing each coefficient as an exact fraction in its lowest terms.  
(ii) Find the range of values for which your expression is valid. (4)

- (b) Express  $(2 + x)^{-3}$  in the form  $A(1 + Bx)^{-3}$  where  $A$  and  $B$  are rational numbers whose values should be stated. (2)

$$f(x) = \frac{(1 + 4x)}{(2 + x)^3}$$

- (c) Obtain a series expansion for  $f(x)$  in ascending powers of  $x$  up to and including the term in  $x^2$ . (2)

- (d) Hence obtain an estimate, to 3 significant figures, of  $\int_0^{0.2} \frac{(1 + 4x)}{(2 + x)^3} dx$  (3)



**Question 8 continued**

DO NOT WRITE IN THIS AREA

DO NOT WRITE IN THIS AREA

DO NOT WRITE IN THIS AREA

Area with horizontal dotted lines for writing.



P 4 7 8 7 8 A 0 2 1 3 6

Question 8 continued

Handwriting practice area with 25 horizontal dotted lines.

DO NOT WRITE IN THIS AREA

DO NOT WRITE IN THIS AREA

DO NOT WRITE IN THIS AREA



**Question 8 continued**

DO NOT WRITE IN THIS AREA

DO NOT WRITE IN THIS AREA

DO NOT WRITE IN THIS AREA

Area with horizontal dotted lines for writing.

**(Total for Question 8 is 11 marks)**



P 4 7 8 7 8 A 0 2 3 3 6

9 The equation  $3x^2 - 4x + 6 = 0$  has roots  $\alpha$  and  $\beta$ .

(a) Without solving the equation, write down

(i) the value of  $\alpha + \beta$

(ii) the value of  $\alpha\beta$

(2)

(b) Without solving the equation, show that  $\alpha^3 + \beta^3 = -\frac{152}{27}$

(3)

(c) Form a quadratic equation, with integer coefficients, that has roots  $\frac{\alpha}{\beta^2}$  and  $\frac{\beta}{\alpha^2}$

(5)

.....

.....

.....

.....

.....

.....

.....

.....

.....

.....

.....

.....

.....

.....

.....

.....

.....

.....

.....

.....

.....

.....

.....

.....

DO NOT WRITE IN THIS AREA

DO NOT WRITE IN THIS AREA

DO NOT WRITE IN THIS AREA





**Question 9 continued**

DO NOT WRITE IN THIS AREA

DO NOT WRITE IN THIS AREA

DO NOT WRITE IN THIS AREA

Area with horizontal dotted lines for writing.



P 4 7 8 7 8 A 0 2 5 3 6

Question 9 continued

Handwriting practice area with 25 horizontal dotted lines.

DO NOT WRITE IN THIS AREA

DO NOT WRITE IN THIS AREA

DO NOT WRITE IN THIS AREA



**Question 9 continued**

DO NOT WRITE IN THIS AREA

DO NOT WRITE IN THIS AREA

DO NOT WRITE IN THIS AREA

Area with horizontal dotted lines for writing.

**(Total for Question 9 is 10 marks)**



P 4 7 8 7 8 A 0 2 7 3 6

10 A particle  $P$  moves along the positive  $x$ -axis. At time  $t$  seconds ( $t \geq 0$ ) the velocity,  $v$  m/s, of  $P$  is given by  $v = t^3 - 4t^2 + 5t + 1$

The acceleration of  $P$  at time  $t$  seconds is  $a$  m/s<sup>2</sup>

(a) Find an expression for  $a$  in terms of  $t$ . (2)

(b) Find the values of  $t$  for which the magnitude of the acceleration of  $P$  is instantaneously zero. (2)

When  $t = 0$ , the displacement of  $P$  from the origin is 3 m.

(c) Find the displacement of  $P$  from the origin when  $t = 2$ . (5)

.....

.....

.....

.....

.....

.....

.....

.....

.....

.....

.....

.....

.....

.....

.....

.....

.....

.....

.....

.....

.....

.....

.....

.....

.....

.....

DO NOT WRITE IN THIS AREA

DO NOT WRITE IN THIS AREA

DO NOT WRITE IN THIS AREA



Question 10 continued

DO NOT WRITE IN THIS AREA

DO NOT WRITE IN THIS AREA

DO NOT WRITE IN THIS AREA

Area with horizontal dotted lines for writing.



P 4 7 8 7 8 A 0 2 9 3 6

**Question 10 continued**

Handwriting practice area consisting of 25 horizontal dotted lines.

DO NOT WRITE IN THIS AREA

DO NOT WRITE IN THIS AREA

DO NOT WRITE IN THIS AREA



**Question 10 continued**

DO NOT WRITE IN THIS AREA

DO NOT WRITE IN THIS AREA

DO NOT WRITE IN THIS AREA

Area with horizontal dotted lines for writing.

**(Total for Question 10 is 9 marks)**



P 4 7 8 7 8 A 0 3 1 3 6

11 The curve  $C$  has equation  $y = px + qx^2$  where  $p$  and  $q$  are integers.

The curve  $C$  has a stationary point at  $(3, 9)$ .

(a) (i) Show that  $p = 6$  and find the value of  $q$ .

(ii) Determine the nature of the stationary point at  $(3, 9)$ .

(7)

The straight line  $l$  with equation  $y + x - 10 = 0$  intersects  $C$  at two points.

(b) Determine the  $x$  coordinate of each of these two points of intersection.

(3)

The finite region bounded by the curve  $C$  and the straight line  $l$  is rotated through  $360^\circ$  about the  $x$ -axis.

(c) Use algebraic integration to find the volume of the solid formed. Give your answer in terms of  $\pi$ .

(5)

DO NOT WRITE IN THIS AREA

DO NOT WRITE IN THIS AREA

DO NOT WRITE IN THIS AREA





Question 11 continued

DO NOT WRITE IN THIS AREA

DO NOT WRITE IN THIS AREA

DO NOT WRITE IN THIS AREA

Area with horizontal dotted lines for writing.



P 4 7 8 7 8 A 0 3 3 3 6

**Question 11 continued**

Handwriting practice area consisting of 25 horizontal dotted lines.

DO NOT WRITE IN THIS AREA

DO NOT WRITE IN THIS AREA

DO NOT WRITE IN THIS AREA



Question 11 continued

DO NOT WRITE IN THIS AREA

DO NOT WRITE IN THIS AREA

DO NOT WRITE IN THIS AREA

Area with horizontal dotted lines for writing.



P 4 7 8 7 8 A 0 3 5 3 6

**Question 11 continued**

Area with horizontal dotted lines for writing.

DO NOT WRITE IN THIS AREA

DO NOT WRITE IN THIS AREA

DO NOT WRITE IN THIS AREA

**(Total for Question 11 is 15 marks)**

**TOTAL FOR PAPER IS 100 MARKS**

