

Write your name here

Surname

Other names

**Pearson Edexcel**  
**International**  
**Advanced Level**

Centre Number

--	--	--	--	--	--

Candidate Number

--	--	--	--	--

# Mechanics M1

## Advanced/Advanced Subsidiary

Wednesday 22 January 2014 – Morning  
**Time: 1 hour 30 minutes**

Paper Reference

**WME01/01****You must have:**

Mathematical Formulae and Statistical Tables (Blue)

Total Marks

--

**Candidates may use any calculator allowed by the regulations of the Joint Council for Qualifications. Calculators must not have the facility for symbolic algebra manipulation, differentiation and integration, or have retrievable mathematical formulae stored in them.**

**Instructions**

- Use **black** ink or ball-point pen.
- If pencil is used for diagrams/sketches/graphs it must be dark (HB or B). Coloured pencils and highlighter pens must not be used.
- **Fill in the boxes** at the top of this page with your name, centre number and candidate number.
- Answer **all** questions and ensure that your answers to parts of questions are clearly labelled.
- Answer the questions in the spaces provided  
– *there may be more space than you need.*
- You should show sufficient working to make your methods clear. Answers without working may not gain full credit.
- Whenever a numerical value of  $g$  is required, take  $g = 9.8 \text{ m s}^{-2}$ , and give your answer to either two significant figures or three significant figures.
- When a calculator is used, the answer should be given to an appropriate degree of accuracy.

**Information**

- The total mark for this paper is 75.
- The marks for **each** question are shown in brackets  
– *use this as a guide as to how much time to spend on each question.*

**Advice**

- Read each question carefully before you start to answer it.
- Try to answer every question.
- Check your answers if you have time at the end.

Turn over ►

P43012A

©2014 Pearson Education Ltd.

5/5/5/



PEARSON



Leave blank

**Question 1 continued**

Lined writing area for the question.

Q1

**(Total 6 marks)**



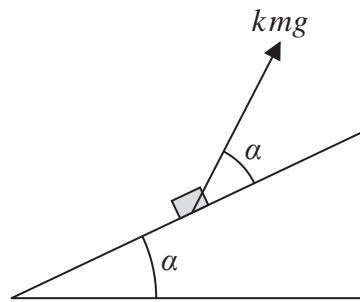








4.

**Figure 1**

A fixed rough plane is inclined to the horizontal at an angle  $\alpha$ , where  $\tan \alpha = \frac{3}{4}$

A small box of mass  $m$  is at rest on the plane. A force of magnitude  $kmg$ , where  $k$  is a constant, is applied to the box. The line of action of the force is at angle  $\alpha$  to the line of greatest slope of the plane through the box, as shown in Figure 1, and lies in the same vertical plane as this line of greatest slope. The coefficient of friction between the box and the plane is  $\mu$ . The box is on the point of slipping up the plane. By modelling the box as a particle, find  $k$  in terms of  $\mu$ .

**(11)**

---

---

---

---

---

---

---

---

---

---

---

---

---

---

---

---

---

---

---

---

---

---

---

---





Question 4 continued

Lined area for writing the answer to Question 4.





Leave  
blank

**Question 4 continued**

Lined area for writing the answer to Question 4.

**Q4**

--	--

**(Total 11 marks)**



P 4 3 0 1 2 A 0 1 1 2 8







Leave blank

**Question 5 continued**

Lined area for writing answers, consisting of 27 horizontal lines.

**(Total 7 marks)**

**Q5**



6.

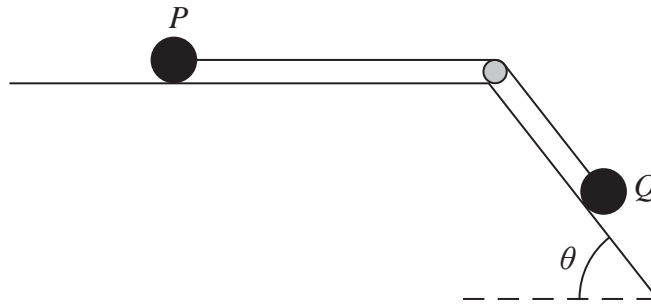


Figure 2

Two particles  $P$  and  $Q$  have masses  $0.1\text{ kg}$  and  $0.5\text{ kg}$  respectively. The particles are attached to the ends of a light inextensible string. Particle  $P$  is held at rest on a rough horizontal table. The string lies along the table and passes over a small smooth pulley which is fixed to the edge of the table. Particle  $Q$  is at rest on a smooth plane which is inclined to the

horizontal at an angle  $\theta$ , where  $\tan \theta = \frac{4}{3}$

The string lies in the vertical plane which contains the pulley and a line of greatest slope of the inclined plane, as shown in Figure 2. Particle  $P$  is released from rest with the string taut. During the first  $0.5\text{ s}$  of the motion  $P$  does not reach the pulley and  $Q$  moves  $0.75\text{ m}$  down the plane.

(a) Find the tension in the string during the first  $0.5\text{ s}$  of the motion.

(6)

(b) Find the coefficient of friction between  $P$  and the table.

(5)

---

---

---

---

---

---

---

---

---

---

---

---

---

---

---

---

---

---

---

---

---

---

---

---







**Question 6 continued**

---

---

---

---

---

---

---

---

---

---

---

---

---

---

---

---

---

---

---

---

---

---

---

---

---

---

---

---

---

---





7. A force  $\mathbf{F}$  is given by  $\mathbf{F} = (9\mathbf{i} + 13\mathbf{j})$  N.

(a) Find the size of the angle between the direction of  $\mathbf{F}$  and the vector  $\mathbf{j}$ . (3)

The force  $\mathbf{F}$  is the resultant of two forces  $\mathbf{P}$  and  $\mathbf{Q}$ . The line of action of  $\mathbf{P}$  is parallel to the vector  $(2\mathbf{i} - \mathbf{j})$ . The line of action of  $\mathbf{Q}$  is parallel to the vector  $(\mathbf{i} + 3\mathbf{j})$ .

(b) Find, in terms of  $\mathbf{i}$  and  $\mathbf{j}$ ,

(i) the force  $\mathbf{P}$ ,

(ii) the force  $\mathbf{Q}$ . (9)

---

---

---

---

---

---

---

---

---

---

---

---

---

---

---

---

---

---

---

---

---

---

---

---

---













Leave blank

**Question 8 continued**

Ruled writing area with 28 horizontal lines for student answers.



P 4 3 0 1 2 A 0 2 5 2 8



**Question 8 continued**

Lined writing area for the answer to Question 8.



P 4 3 0 1 2 A 0 2 7 2 8

**Question 8 continued**

---

---

---

---

---

---

---

---

---

---

---

---

---

---

---

---

---

---

---

---

---

---

---

---

---

---

---

---

---

---

**Q8**

**(Total 17 marks)**

**TOTAL FOR PAPER: 75 MARKS**

**END**

