



Cambridge International AS & A Level

CANDIDATE
NAME

--

CENTRE
NUMBER

--	--	--	--	--

CANDIDATE
NUMBER

--	--	--	--



MATHEMATICS

9709/32

Paper 3 Pure Mathematics 3

October/November 2022

1 hour 50 minutes

You must answer on the question paper.

You will need: List of formulae (MF19)

INSTRUCTIONS

- Answer **all** questions.
- Use a black or dark blue pen. You may use an HB pencil for any diagrams or graphs.
- Write your name, centre number and candidate number in the boxes at the top of the page.
- Write your answer to each question in the space provided.
- Do **not** use an erasable pen or correction fluid.
- Do **not** write on any bar codes.
- If additional space is needed, you should use the lined page at the end of this booklet; the question number or numbers must be clearly shown.
- You should use a calculator where appropriate.
- You must show all necessary working clearly; no marks will be given for unsupported answers from a calculator.
- Give non-exact numerical answers correct to 3 significant figures, or 1 decimal place for angles in degrees, unless a different level of accuracy is specified in the question.

INFORMATION

- The total mark for this paper is 75.
- The number of marks for each question or part question is shown in brackets [].

This document has **20** pages. Any blank pages are indicated.

- 1 Solve the equation $2^{3x-1} = 5(3^{1-x})$. Give your answer in the form $\frac{\ln a}{\ln b}$ where a and b are integers.

[4]

.....

.....

.....

.....

.....

.....

.....

.....

.....

.....

.....

.....

.....

.....

.....

.....

.....

.....

.....

.....

.....

.....

.....

.....

2 The polynomial $2x^3 - x^2 + a$, where a is a constant, is denoted by $p(x)$. It is given that $(2x + 3)$ is a factor of $p(x)$.

(a) Find the value of a . [2]

.....

.....

.....

.....

.....

.....

.....

.....

.....

.....

(b) When a has this value, solve the inequality $p(x) < 0$. [4]

.....

.....

.....

.....

.....

.....

.....

.....

.....

.....

.....

.....

.....

.....

.....

.....

.....

.....

.....

.....

.....

.....

3 The equation of a curve is $y = \sin x \sin 2x$. The curve has a stationary point in the interval $0 < x < \frac{1}{2}\pi$.
Find the x -coordinate of this point, giving your answer correct to 3 significant figures. [6]

.....

.....

.....

.....

.....

.....

.....

.....

.....

.....

.....

.....

.....

.....

.....

.....

.....

.....

.....

.....

.....

.....

.....

.....

.....

.....

.....

.....

.....

.....

.....

.....

.....

.....

.....

.....

.....

.....

.....

.....

.....

- 4 (a) Express $4 \cos x - \sin x$ in the form $R \cos(x + \alpha)$, where $R > 0$ and $0^\circ < \alpha < 90^\circ$. State the exact value of R and give α correct to 2 decimal places. [3]

.....

.....

.....

.....

.....

.....

.....

.....

.....

.....

.....

.....

.....

.....

.....

.....

.....

.....

.....

.....

.....

.....

- (b) Hence solve the equation $4 \cos 2x - \sin 2x = 3$ for $0^\circ < x < 180^\circ$. [5]

.....

.....

.....

.....

.....

.....

.....

.....

.....

.....

.....

.....

.....

.....

.....

.....

.....

.....

.....

.....

.....

.....

- 5 (a) Solve the equation $z^2 - 6iz - 12 = 0$, giving the answers in the form $x + iy$, where x and y are real and exact. [3]

.....

.....

.....

.....

.....

.....

.....

.....

.....

.....

.....

.....

.....

.....

.....

.....

.....

.....

.....

.....

.....

.....

- (b) On a sketch of an Argand diagram with origin O , show points A and B representing the roots of the equation in part (a). [1]

(c) Find the exact modulus and argument of each root. [3]

.....

.....

.....

.....

.....

.....

.....

.....

.....

.....

.....

.....

.....

.....

.....

.....

.....

.....

.....

.....

.....

.....

(d) Hence show that the triangle OAB is equilateral. [1]

.....

.....

.....

.....

.....

.....

.....

.....

.....

.....

.....

.....

.....

.....

.....

.....

.....

.....

.....

.....

.....

.....

6 Relative to the origin O , the points A , B and C have position vectors given by

$$\vec{OA} = \begin{pmatrix} 1 \\ 3 \\ 1 \end{pmatrix}, \quad \vec{OB} = \begin{pmatrix} 3 \\ 1 \\ 2 \end{pmatrix} \quad \text{and} \quad \vec{OC} = \begin{pmatrix} 5 \\ 3 \\ -2 \end{pmatrix}.$$

(a) Using a scalar product, find the cosine of angle BAC . [4]

.....

.....

.....

.....

.....

.....

.....

.....

.....

.....

.....

.....

.....

.....

.....

.....

.....

.....

.....

.....

.....

.....

.....

(b) Hence find the area of triangle ABC . Give your answer in a simplified exact form. [4]

.....

.....

.....

.....

.....

.....

.....

.....

.....

.....

.....

.....

.....

.....

.....

.....

.....

.....

.....

.....

.....

.....

.....

.....

.....

7 The variables x and θ satisfy the differential equation

$$x \sin^2 \theta \frac{dx}{d\theta} = \tan^2 \theta - 2 \cot \theta,$$

for $0 < \theta < \frac{1}{2}\pi$ and $x > 0$. It is given that $x = 2$ when $\theta = \frac{1}{4}\pi$.

(a) Show that $\frac{d}{d\theta}(\cot^2 \theta) = -\frac{2 \cot \theta}{\sin^2 \theta}$.

(You may assume without proof that the derivative of $\cot \theta$ with respect to θ is $-\operatorname{cosec}^2 \theta$.) [1]

.....

.....

.....

.....

.....

.....

.....

.....

.....

.....

(b) Solve the differential equation and find the value of x when $\theta = \frac{1}{6}\pi$. [7]

.....

.....

.....

.....

.....

.....

.....

.....

.....

.....

.....

.....

.....

.....

.....

.....

.....

.....

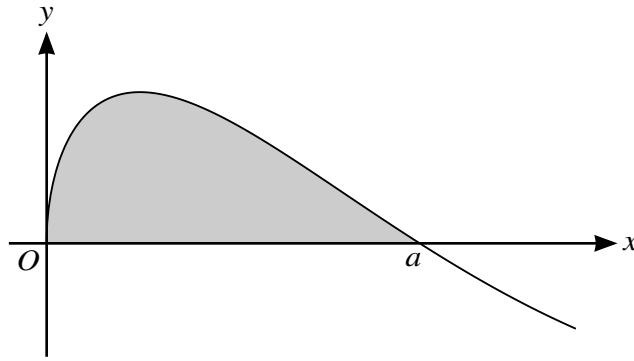
.....

.....

.....

A series of 25 horizontal dotted lines for writing.

8



The diagram shows part of the curve $y = \sin \sqrt{x}$. This part of the curve intersects the x -axis at the point where $x = a$.

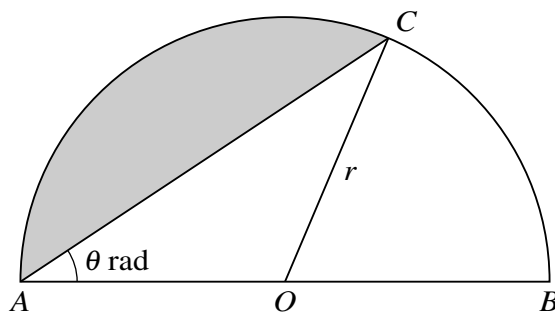
(a) State the exact value of a . [1]

.....
.....
.....

(b) Using the substitution $u = \sqrt{x}$, find the exact area of the shaded region in the first quadrant bounded by this part of the curve and the x -axis. [7]

.....
.....
.....
.....
.....
.....
.....
.....
.....
.....
.....
.....
.....
.....
.....
.....
.....
.....
.....
.....
.....
.....
.....

9



The diagram shows a semicircle with diameter AB , centre O and radius r . The shaded region is the minor segment on the chord AC and its area is one third of the area of the semicircle. The angle CAB is θ radians.

(a) Show that $\theta = \frac{1}{3}(\pi - 1.5 \sin 2\theta)$. [4]

.....

.....

.....

.....

.....

.....

.....

.....

.....

.....

.....

.....

.....

.....

.....

.....

.....

.....

.....

.....

.....

.....

.....

.....

.....

.....

(b) Verify by calculation that $0.5 < \theta < 0.7$.

[2]

.....

.....

.....

.....

.....

.....

.....

.....

.....

.....

.....

.....

.....

.....

.....

.....

.....

.....

.....

.....

.....

.....

(c) Use an iterative formula based on the equation in part (a) to determine θ correct to 3 decimal places. Give the result of each iteration to 5 decimal places. [3]

.....

.....

.....

.....

.....

.....

.....

.....

.....

.....

.....

.....

.....

.....

.....

.....

.....

.....

.....

.....

.....

.....

10 Let $f(x) = \frac{4 - x + x^2}{(1 + x)(2 + x^2)}$.

(a) Express $f(x)$ in partial fractions.

[5]

Dotted lines for writing the answer.

(b) Find the exact value of $\int_0^4 f(x) dx$. Give your answer as a single logarithm. [5]

Additional Page

If you use the following lined page to complete the answer(s) to any question(s), the question number(s) must be clearly shown.

.....

.....

.....

.....

.....

.....

.....

.....

.....

.....

.....

.....

.....

.....

.....

.....

.....

.....

.....

.....

.....

.....

.....

.....

.....

.....

BLANK PAGE

BLANK PAGE

Permission to reproduce items where third-party owned material protected by copyright is included has been sought and cleared where possible. Every reasonable effort has been made by the publisher (UCLES) to trace copyright holders, but if any items requiring clearance have unwittingly been included, the publisher will be pleased to make amends at the earliest possible opportunity.

To avoid the issue of disclosure of answer-related information to candidates, all copyright acknowledgements are reproduced online in the Cambridge Assessment International Education Copyright Acknowledgements Booklet. This is produced for each series of examinations and is freely available to download at www.cambridgeinternational.org after the live examination series.

Cambridge Assessment International Education is part of Cambridge Assessment. Cambridge Assessment is the brand name of the University of Cambridge Local Examinations Syndicate (UCLES), which is a department of the University of Cambridge.