



**Cambridge International Examinations**  
Cambridge International General Certificate of Secondary Education

CANDIDATE  
NAME

CENTRE  
NUMBER

--	--	--	--	--

CANDIDATE  
NUMBER

--	--	--	--



**ENVIRONMENTAL MANAGEMENT**

**0680/22**

Paper 2

**May/June 2016**

**1 hour 45 minutes**

Candidates answer on the Question Paper.

No Additional Materials are required.

**READ THESE INSTRUCTIONS FIRST**

Write your Centre number, candidate number and name on all the work you hand in.

Write in dark blue or black pen.

You may use an HB pencil for any diagrams or graphs.

Do not use staples, paper clips, glue or correction fluid.

**DO NOT WRITE IN ANY BARCODES.**

Answer **both** questions.

Electronic calculators may be used.

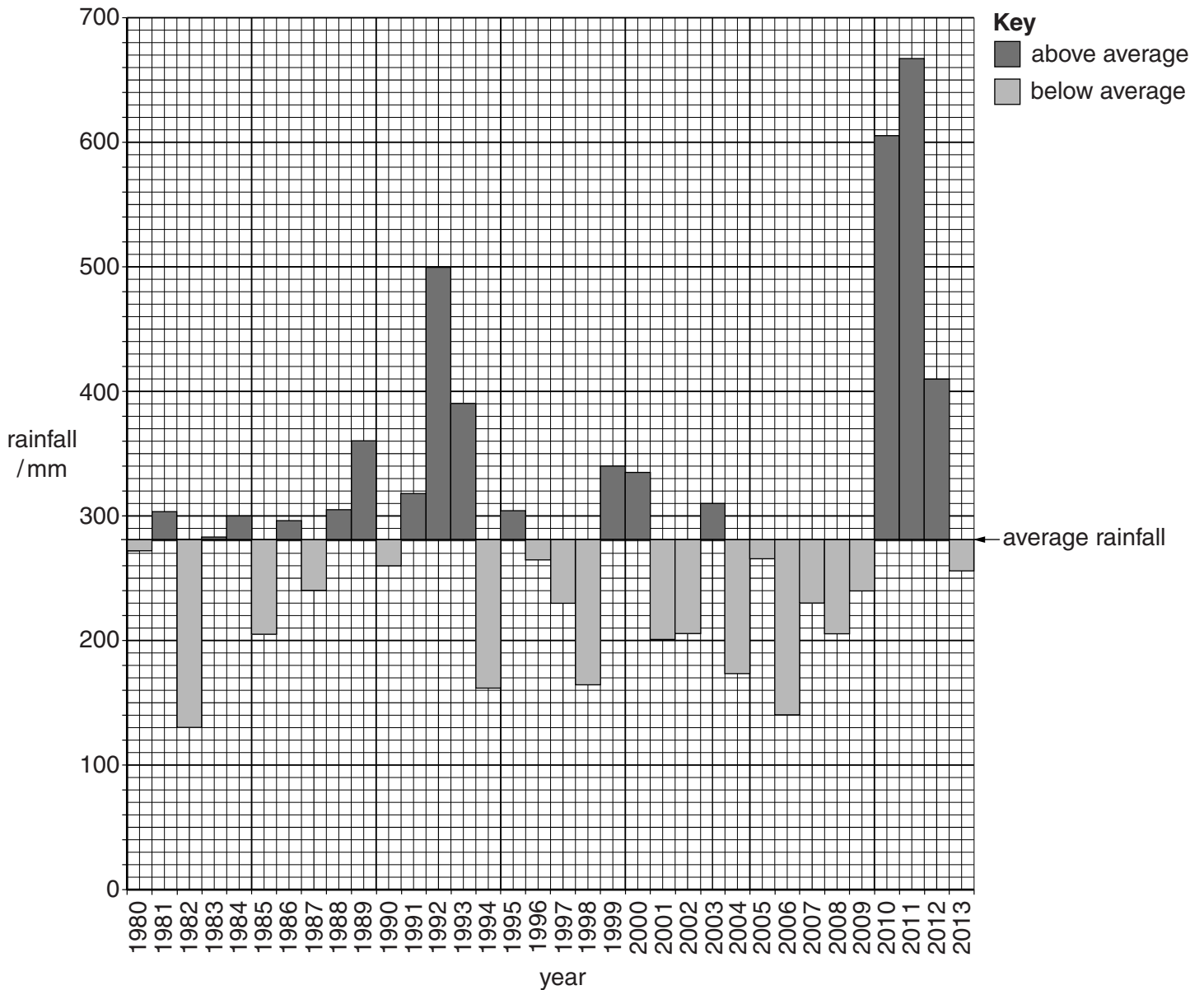
You may lose marks if you do not show your working or if you do not use appropriate units.

At the end of the examination, fasten all your work securely together.

The number of marks is given in brackets [ ] at the end of each question or part question.

This document consists of **15** printed pages and **1** blank page.

- 1 (a) Look at the graph, which shows the annual rainfall from 1980 to 2013 at a weather station in an area with a savanna climate. The weather station is located near to a large river.



- (i) State the highest annual rainfall and the year in which it occurred.

rainfall ..... mm

year .....

[2]

- (ii) State the year when the annual rainfall was closest to the average rainfall.

year ..... [1]

- (iii) State the number of years that rainfall was below average over the period shown on the graph.

..... years [1]

(iv) Suggest **one** problem the people close to the river may have experienced in 2010 and 2011.

.....  
.....[1]

(b) The weather station is in an agricultural area. The land close to the river is used for intensive fruit and vegetable farming. The land away from the river is used for extensive cattle farming.

(i) Explain why the land close to the river is used for intensive fruit and vegetable farming, but the land further away is used for extensive cattle farming.

.....  
.....  
.....  
.....[2]

(ii) Describe **two** problems for cattle farmers from the year 2004 until 2009.

.....  
.....  
.....  
.....[2]

(iii) Explain why soil erosion occurred during 2010.

.....  
.....  
.....  
.....  
.....  
.....  
.....  
.....  
.....  
.....[4]

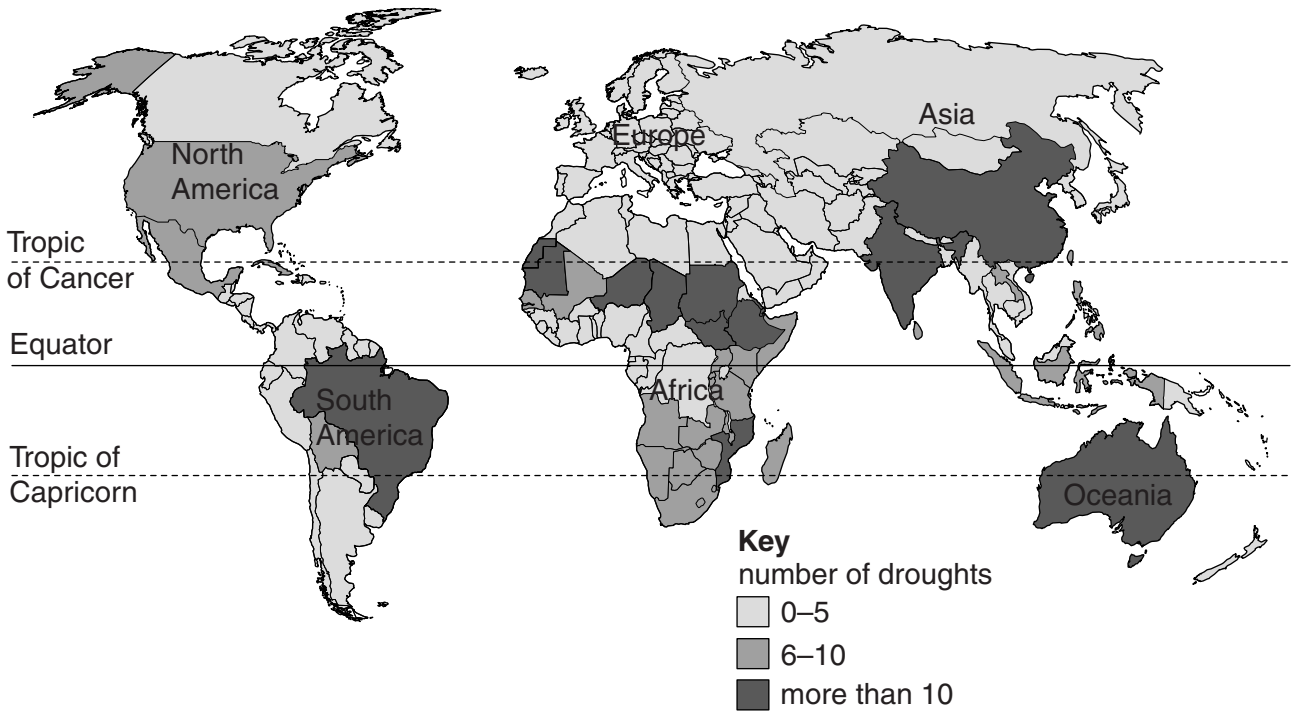
(iv) The fruit and vegetable farmers use large quantities of fertilisers. Describe the problems that these may cause for the environment.

.....  
.....  
.....  
.....  
.....  
.....  
.....  
.....  
.....[4]

(v) Suggest how farming in this area could be made more sustainable.

.....  
.....  
.....  
.....  
.....  
.....[3]

(c) Look at the map below, which shows the number of droughts by country for a 30-year period.



(i) What is a drought?

.....  
.....[1]

(ii) Name the continent where all countries had 0–5 droughts.

.....[1]

(iii) Describe the location of the areas that had more than 10 droughts.

.....  
.....  
.....  
.....  
.....  
.....  
.....  
.....[3]

(iv) Suggest human causes of droughts.

.....  
.....  
.....  
.....[2]

(d) Look at the picture below.



Suggest why bush fires and mass extinctions could increase in the next 100 years.

.....

.....

.....

.....

.....

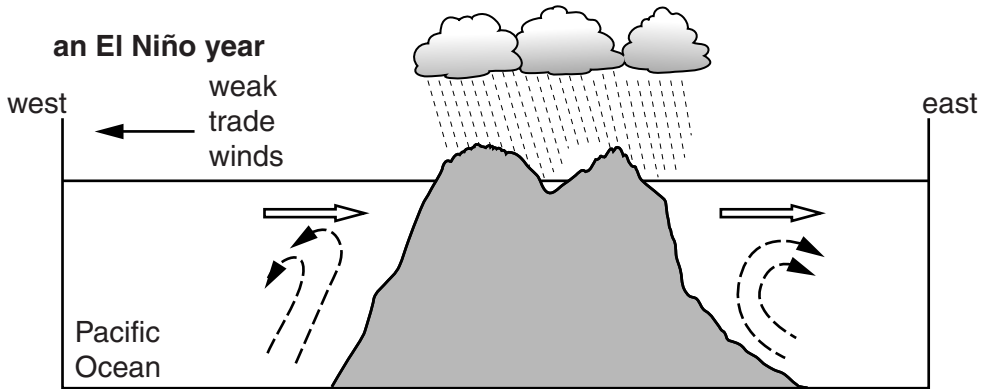
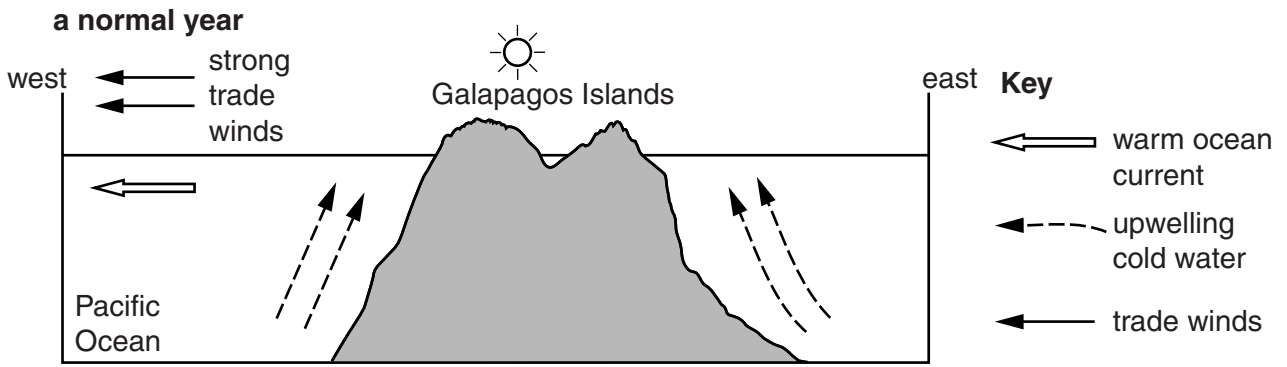
.....

.....

.....

[3]

(e) Look at the diagrams showing information about an El Niño event.



Use the diagrams to describe an El Niño event.

.....

.....

.....

.....

.....

.....

.....

.....

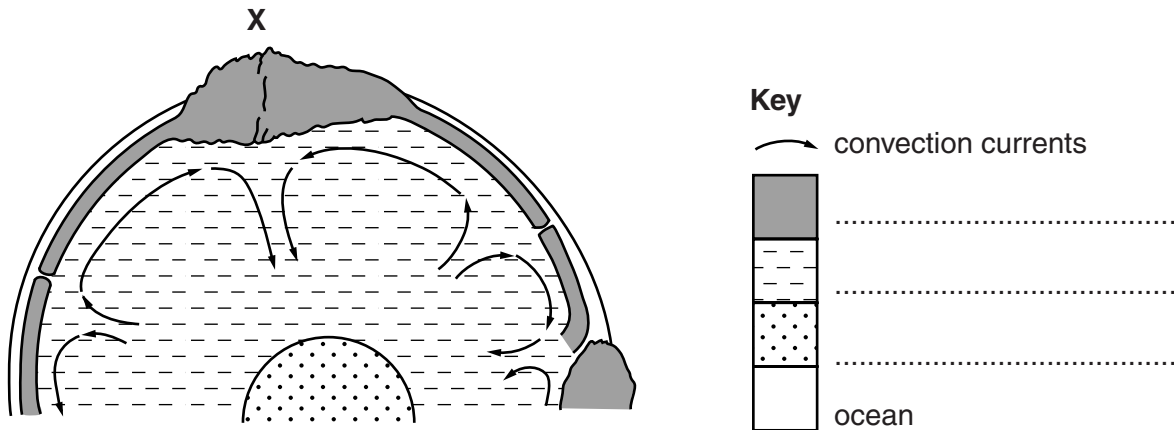
.....

.....[4]





2 (a) Look at the diagram, which shows the structure of the Earth.



(i) Complete the key using the following words. [2]

core

crust

mantle

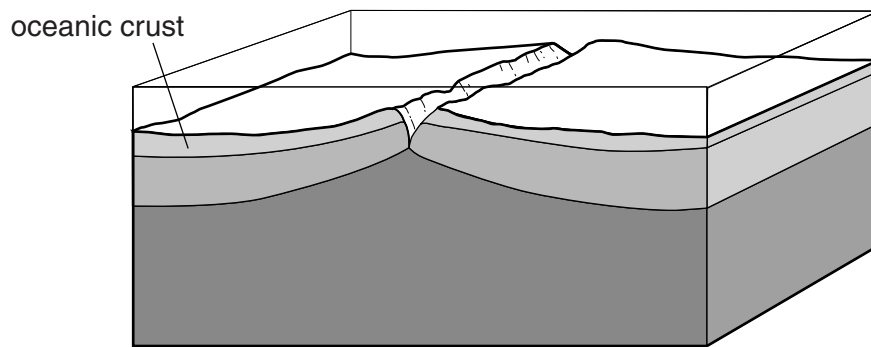
(ii) With the aid of a diagram, explain why a mountain range has formed at X. [3]

.....  
.....  
.....  
.....  
.....  
.....[3]

(iii) Explain why volcanoes are **not** formed at X. [2]

.....  
.....  
.....  
.....[2]

(b) Look at the diagram, which shows a cross-section of a plate boundary at a mid-oceanic ridge.



(i) Which type of plate boundary is shown? Circle **one** answer.

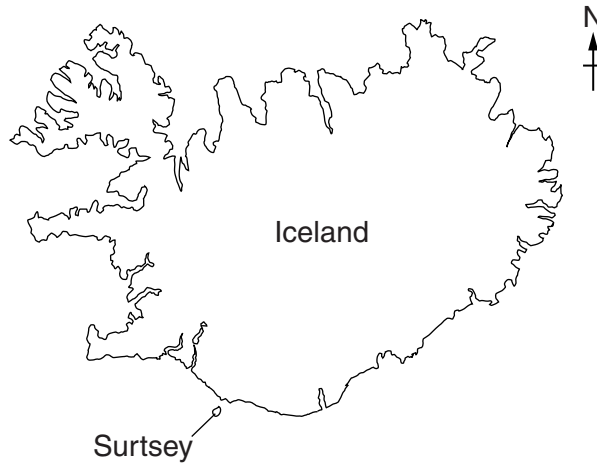
**conservative**      **constructive (divergent)**      **destructive (convergent)**      [1]

(ii) On the diagram:

- draw arrows to show the direction of movement of the plates,
- label a fault.

[2]

- (c) Iceland is located on the Atlantic mid-oceanic ridge between Europe and North America. In the 1960s a new volcanic island was formed off the southern coast. This new island has been called Surtsey. Since the island was formed, plant and insect populations have developed.



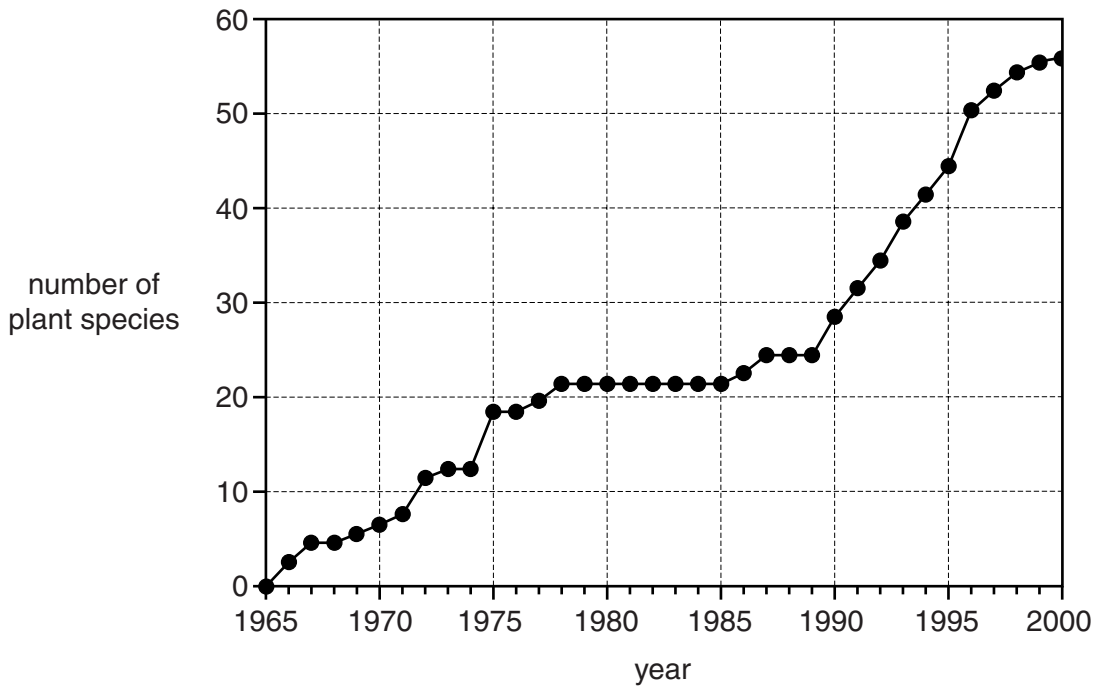
- (i) State the location of Surtsey.

.....  
.....[1]

- (ii) Which type of rock formed Surtsey? Circle **one** answer.

**igneous**                      **metamorphic**                      **sedimentary**                      [1]

(d) Look at the graph, which shows the number of plant species found on Surtsey from 1965 to 2000.



(i) State the number of plant species on Surtsey in 1985.  
 .....[1]

(ii) Describe the changes in the number of plant species between 1965 and 2000.  
 .....  
 .....  
 .....  
 .....  
 .....  
 .....  
 .....  
 .....  
 .....  
 .....  
 .....[4]

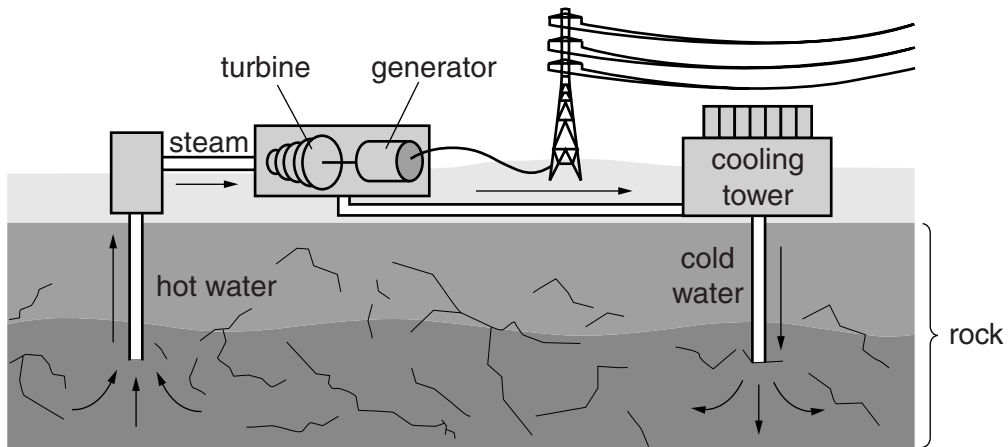
(iii) A colony of seabirds started nesting on the island in 1989. Suggest ways the seabirds affected the number of plant species found on Surtsey.

.....  
.....  
.....  
.....  
.....  
.....  
.....[3]

(iv) Explain the meaning of the term *vegetational succession*.

.....  
.....  
.....  
.....[2]

(e) Look at the diagram of a geothermal power station.



(i) Using the diagram, explain how electricity is produced in a geothermal power station.

.....  
.....  
.....  
.....  
.....  
.....  
.....  
.....  
.....  
.....  
.....[4]

(ii) Suggest why Iceland generates much of its electricity from geothermal power stations.

.....  
.....[1]

(iii) Is geothermal energy a sustainable energy source? Give reasons for your answer.

.....  
.....  
.....  
.....  
.....  
.....  
.....[3]

(iv) Much of the world's electricity is generated using fossil fuels. Explain why environmental groups want to reduce the use of fossil fuels.

.....  
.....  
.....  
.....  
.....  
.....  
.....  
.....  
.....[4]

(f) Are the advantages of living in an area of active volcanoes greater than the disadvantages? Give reasons for your answer.

.....  
.....  
.....  
.....  
.....  
.....  
.....  
.....  
.....  
.....  
.....  
.....  
.....  
.....  
.....  
.....  
.....  
.....  
.....  
.....[6]

**BLANK PAGE**

---

Permission to reproduce items where third-party owned material protected by copyright is included has been sought and cleared where possible. Every reasonable effort has been made by the publisher (UCLES) to trace copyright holders, but if any items requiring clearance have unwittingly been included, the publisher will be pleased to make amends at the earliest possible opportunity.

To avoid the issue of disclosure of answer-related information to candidates, all copyright acknowledgements are reproduced online in the Cambridge International Examinations Copyright Acknowledgements Booklet. This is produced for each series of examinations and is freely available to download at [www.cie.org.uk](http://www.cie.org.uk) after the live examination series.

Cambridge International Examinations is part of the Cambridge Assessment Group. Cambridge Assessment is the brand name of University of Cambridge Local Examinations Syndicate (UCLES), which is itself a department of the University of Cambridge.