



Cambridge International Examinations
Cambridge International General Certificate of Secondary Education

CANDIDATE NAME

CENTRE NUMBER

CANDIDATE NUMBER



COMBINED SCIENCE **0653/43**
Paper 4 (Extended) **October/November 2018**
1 hour 15 minutes

Candidates answer on the Question Paper.
No Additional Materials are required.

READ THESE INSTRUCTIONS FIRST

Write your Centre number, candidate number and name on all the work you hand in.
Write in dark blue or black pen.
You may use an HB pencil for any diagrams or graphs.
Do not use staples, paper clips, glue or correction fluid.
DO NOT WRITE IN ANY BARCODES.

Answer **all** questions.
Electronic calculators may be used.
You may lose marks if you do not show your working or if you do not use appropriate units.
A copy of the Periodic Table is printed on page 24.

At the end of the examination, fasten all your work securely together.
The number of marks is given in brackets [] at the end of each question or part question.

This document consists of **21** printed pages and **3** blank pages.

1 (a) Fig. 1.1 is a diagram of a cell which lines the human airway.

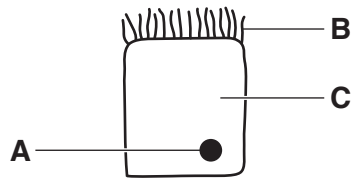


Fig. 1.1

Table 1.1 shows the names and functions of parts of the cell shown in Fig. 1.1.

Complete Table 1.1.

Table 1.1

letter	name	functions
A	nucleus	controls the activities of the cell
B		
C		

[4]

(b) Fig. 1.2 shows a drawing of a wind-pollinated flower.

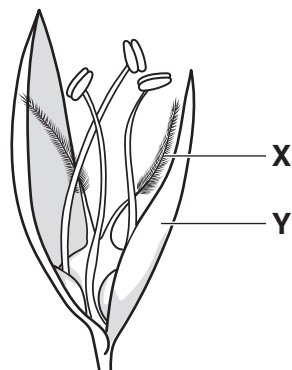


Fig. 1.2

(i) Describe how the structure of X is adapted to its function.

.....

.....

.....[2]

(ii) Structure **Y** is not brightly coloured.

Explain why a bright colour is not necessary for structure **Y**.

.....
.....
.....[2]

- 2 (a) Carbon dioxide is a product of the thermal decomposition of calcium carbonate.
- (i) Complete the dot-and-cross diagram of a molecule of carbon dioxide to show the bonding electrons between atoms.



[2]

- (ii) Name this type of chemical bonding.

.....[1]

- (iii) Describe a chemical test for carbonate ions in an aqueous solution.

State the observations that show a positive result.

test:

step 1

step 2

observations

[2]

- (iv) The thermal decomposition of calcium carbonate is an endothermic change.

Describe what is meant by *endothermic*.

Use ideas about chemical energy and heat (thermal energy) in your answer.

.....

.....[1]

(b) The atomic number of calcium is 20.

(i) Complete Fig. 2.1 to show the electronic structure of a calcium atom.

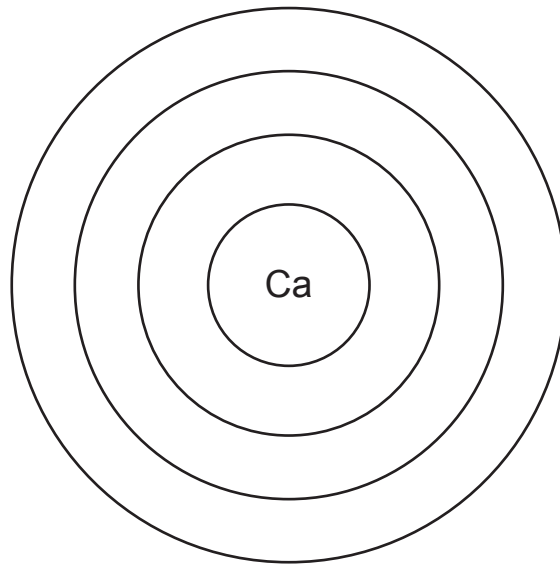


Fig. 2.1

[1]

(ii) The symbol of a calcium ion is Ca^{2+} .

Describe, in terms of electrons, how this ion is formed from a calcium atom.

.....
.....[2]

3 Fig. 3.1 shows a man pushing a shopping trolley.



Fig. 3.1

Fig. 3.2 shows a speed–time graph of the trolley as the man pushes it to the checkout.

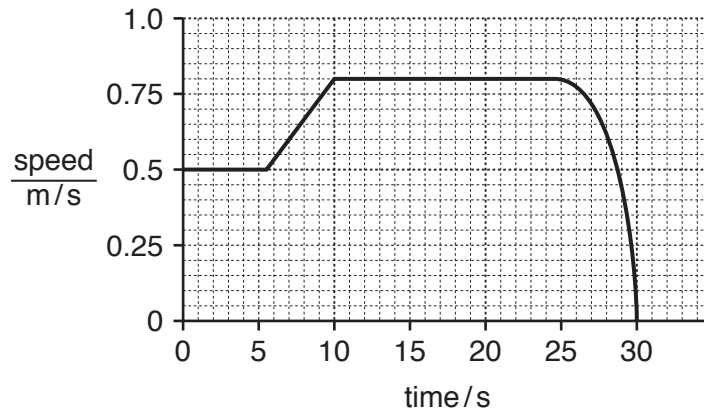


Fig. 3.2

(a) (i) On Fig. 3.2, label with a letter **C** a point in the journey when the trolley is travelling with constant acceleration. [1]

(ii) The trolley travels 20 m to the checkout.

Use information from the graph to calculate the average speed of the trolley on this journey.

Show your working.

average speed = m/s [2]

(b) Fig. 3.3 shows the four forces acting on the trolley as it moves.

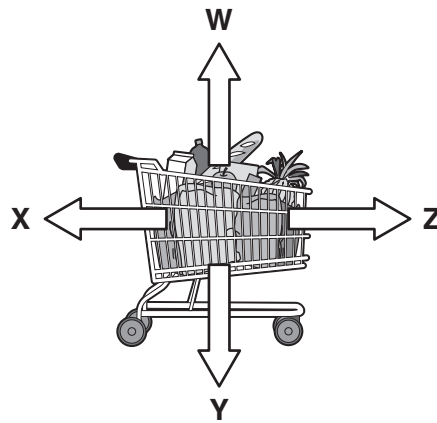


Fig. 3.3

(i) State the letter corresponding to the force exerted by the man on the trolley.

.....[1]

(ii) Use Fig. 3.2 to describe how the relative sizes of forces **X** and **Z** change between 20s and 30s.

.....
[2]

(c) The man provides the energy to push the trolley to the checkout. The trolley and its contents have a mass of 20 kg.

Calculate the kinetic energy of the trolley between 10 s and 25 s.

State the formula you use and show your working.

formula

working

kinetic energy = J [2]

- (d) As the trolley is moved to the checkout, 2400 J is required to do work against forces resisting the motion.

The efficiency of the man's body providing this energy to the trolley is 20%.

Calculate the total energy used by the man's body to do this work.

State the formula you use and show your working.

formula

working

energy = J [2]

BLANK PAGE

- 4 Rainforest is often cleared for agriculture by cutting down the trees and burning them. This process is called 'slash and burn'. The burning of the trees produces a smoky haze made from very small carbon particles suspended in the air.

Fig. 4.1 is a picture of clearing land by slash and burn.

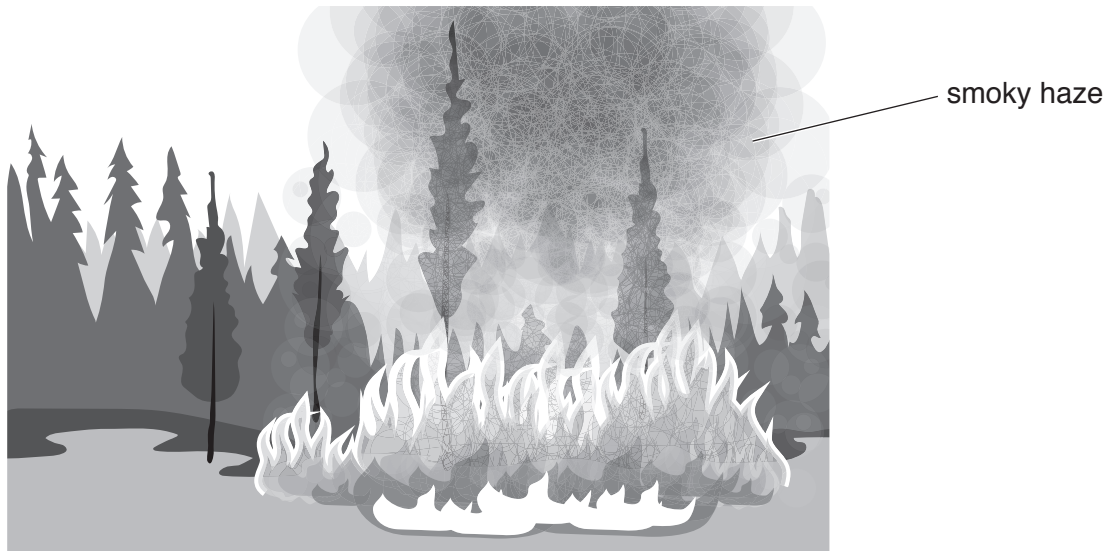


Fig. 4.1

- (a) Suggest how the gas exchange system of a human could be affected by inspiring a large volume of the air containing the carbon particles.

.....
.....[1]

- (b) (i) Some of the suspended carbon particles land on the leaves of crops and trees covering them with a thin layer of carbon.

Suggest **and** explain how this layer of carbon affects the function of chlorophyll in the leaves.

.....
.....
.....
.....[3]

- (ii) The concentration of oxygen in the atmosphere decreases in the area where slash and burn is taking place.

Suggest **two** reasons why this happens.

1.
.....

2.
.....

[2]

- (c) Some human activities cause the concentration of carbon dioxide in the atmosphere to increase.

Use words or phrases from the list to complete the sentences about how this can affect the environment.

Each word or phrase may be used once, more than once or not at all.

- acid rain argon gamma global warming infra-red**
methane nitrogen oxygen ultraviolet

Greenhouse gases such as carbon dioxide and absorb
..... radiation given out from the Earth.

When the concentration of carbon dioxide in the atmosphere increases, more of this radiation is absorbed and eventually released into the atmosphere. This increases
.....

[3]

- 5 (a) A student investigates the reactivities of four metals, **A**, **B**, **C** and **D**.

He uses pieces of metal which are the same size.

A gas is produced when the metals react with dilute hydrochloric acid.

He uses the apparatus shown in Fig. 5.1 to measure the time taken to collect 25 cm³ of the gas.

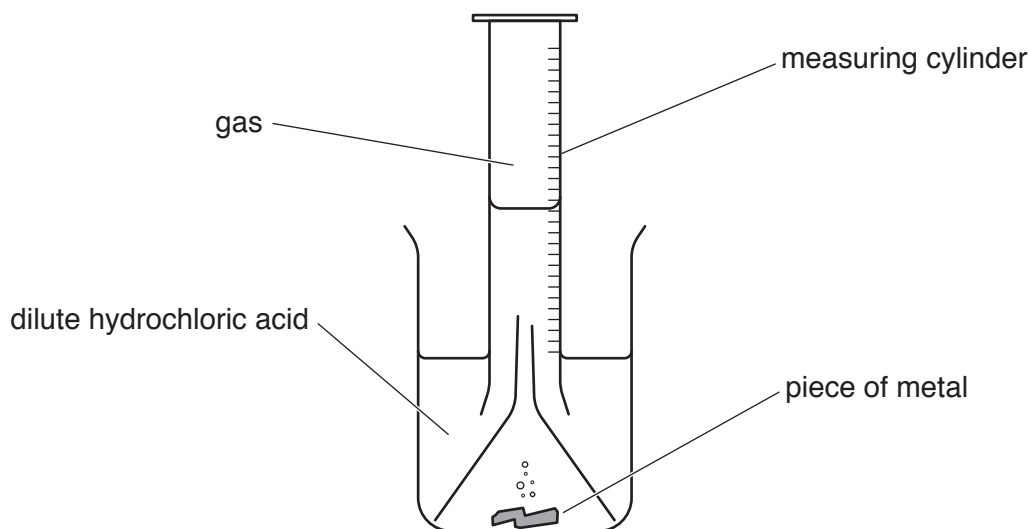


Fig. 5.1

The results of the investigation are shown in Table 5.1.

Table 5.1

metal	time/s
A	25
B	115
C	73
D	305

- (i) Using letters **A**, **B**, **C** and **D**, state the order of reactivity of these metals, from most reactive to least reactive.

..... most reactive

 least reactive

[1]

(ii) Describe and explain the effect of increasing the temperature on the rate of a reaction.

Use ideas about particle movement and particle collisions in your answer.

effect

explanation

.....

.....

.....

[3]

(b) Iron is extracted from iron ore by reduction in a blast furnace.

Limestone is added to the blast furnace to separate impurities from the iron.

(i) Name **two other** raw materials which are added to the blast furnace.

1.

2.

[2]

(ii) Explain what is meant by *reduction*.

.....

.....[1]

(c) Aluminium cannot be extracted from its ore by reduction in a blast furnace.

(i) Explain why reduction in a blast furnace cannot be used to extract aluminium from its ore.

.....

.....[1]

(ii) Name the method of extraction of aluminium from its ore.

.....[1]

- 6 (a) The density of water, a liquid, is very different from the density of steam, a gas.

Explain in terms of distances and forces between molecules, and their motion, why the density of water is so much greater than the density of steam.

.....

.....

.....

.....[3]

- (b) Fig. 6.1 shows an insulated container of boiling water left to cool on a balance.

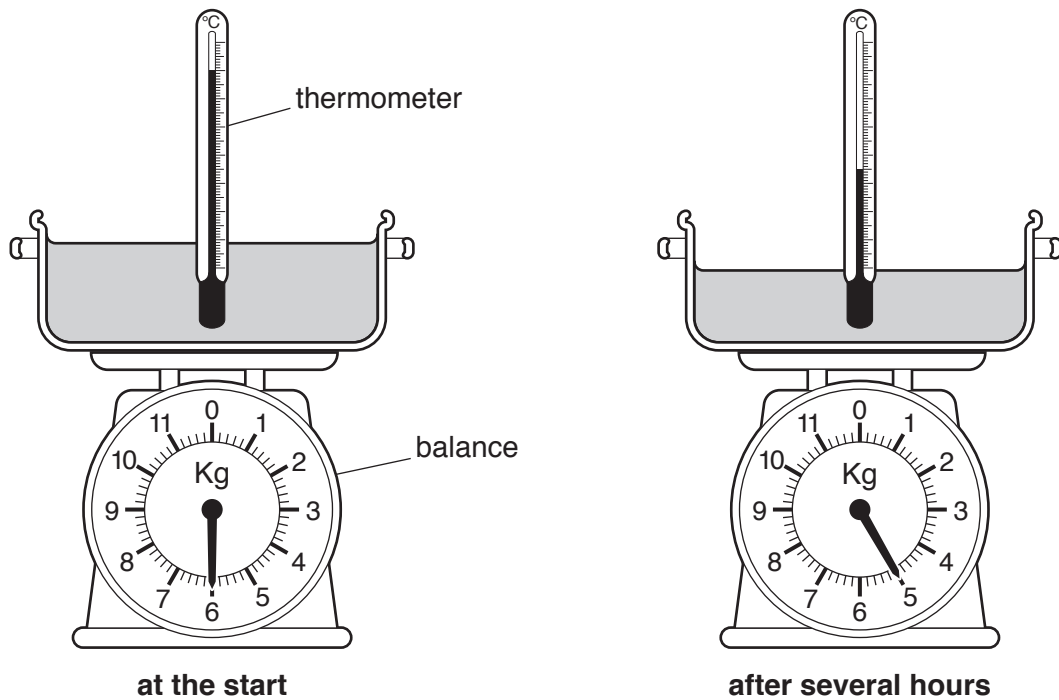


Fig. 6.1

After several hours, the reading on the scale of the balance is shown in Fig. 6.1.

- (i) Describe how the evaporation of water from the container is the cause of the cooling of the water.

.....

.....

.....

.....[2]

- (ii) The experiment in Fig. 6.1 is repeated with the same volume of boiling water but using the insulated container shown in Fig. 6.2.

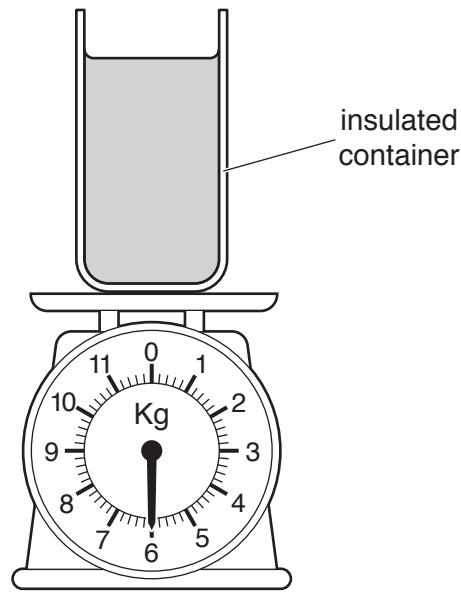


Fig. 6.2

Predict how the results of the second experiment will differ in terms of temperature change **and** mass loss compared with the first experiment.

Give a reason for your answer.

predictions

.....

reason

.....

[2]

- (c) An observer is measuring the temperature of the water in the pan in (b). He says the thermometer looks bent where it goes into the water. He says the thermometer bulb is at **X** on Fig. 6.3.

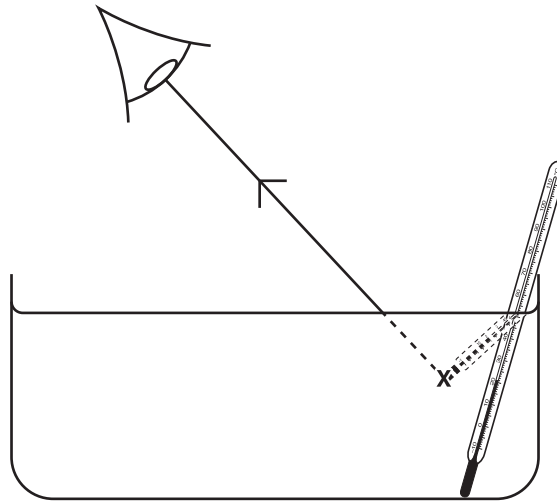


Fig. 6.3

- (i) Rays of light change direction when they pass through the surface of the water.
 Name this effect[1]
- (ii) Fig. 6.3 shows where the observer thinks the ray is coming from.
 On Fig. 6.3 complete the ray diagram to show where the ray is actually coming from. [1]

7 (a) Fig. 7.1 shows the external structures of the heart.

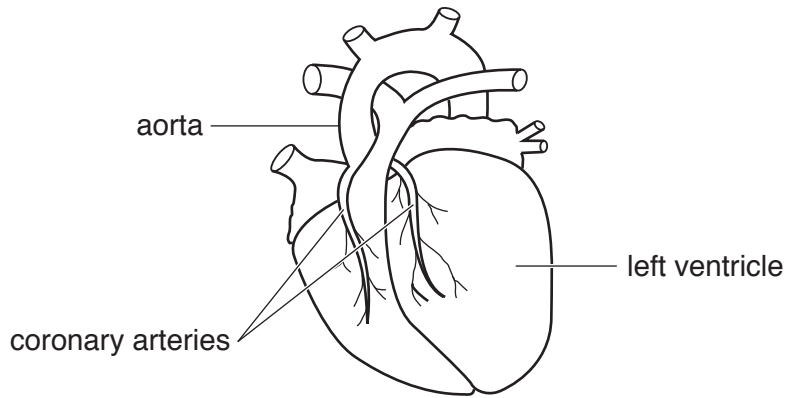


Fig. 7.1

(i) Describe the function of the coronary arteries.

.....
[2]

(ii) Coronary heart disease (CHD) occurs when the coronary arteries become narrow.

Describe what causes the narrowing of the arteries.

.....[1]

(iii) Describe **two** ways in which a person can reduce the risk of developing CHD.

1.
2.[2]

(b) During exercise energy is released in the muscles by aerobic respiration.

(i) State the balanced symbol equation for aerobic respiration.

.....[2]

(ii) State how the energy released by respiration is used by the muscles.

.....[1]

(iii) State **two** reasons why an increased heart rate is needed for respiration in the muscles during exercise.

1.

2.

8 Fig. 8.1 shows the structures of three hydrocarbon molecules, **A**, **B**, and **C**.

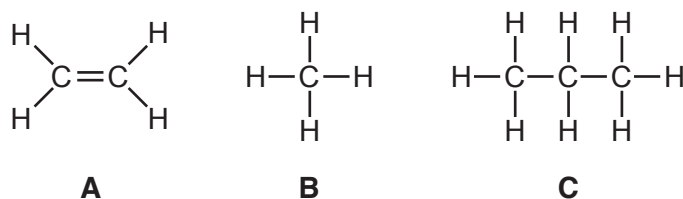


Fig. 8.1

(a) (i) Name hydrocarbons **A** and **B**.

A

B

[2]

(ii) Describe the changes, if any, that are observed when bromine water is added separately to samples of hydrocarbons **A** and **B**.

A

B

[2]

(iii) Deduce the balanced equation for the complete combustion of hydrocarbon **C**.

..... + \longrightarrow + [2]

(b) Hydrocarbon **A** is made in process **Y**, as shown in Fig. 8.2.

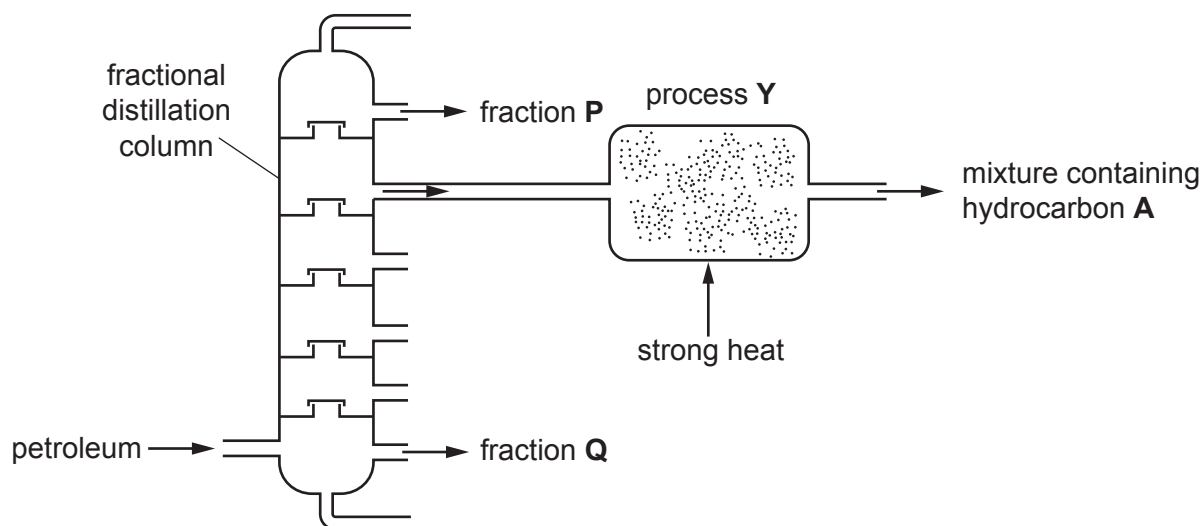


Fig. 8.2

(i) Name process **Y**.

.....[1]

(ii) Describe the difference in the boiling points of fraction **P** and fraction **Q**.

Explain this difference in terms of the sizes of molecules and of intermolecular attractive forces.

difference

explanation

.....

.....

[2]

9 Fig. 9.1 shows a display refrigerator for storing cold drinks in a shop.

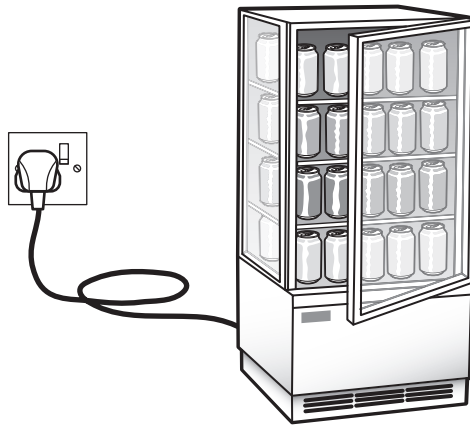


Fig. 9.1

The refrigerator uses electrical energy

- for a lamp to light up the inside of the refrigerator
- to power an electric motor to run the cooler in the refrigerator.

The circuit symbol for an electric motor is: 

Fig. 9.2 shows part of the circuit diagram for the refrigerator.

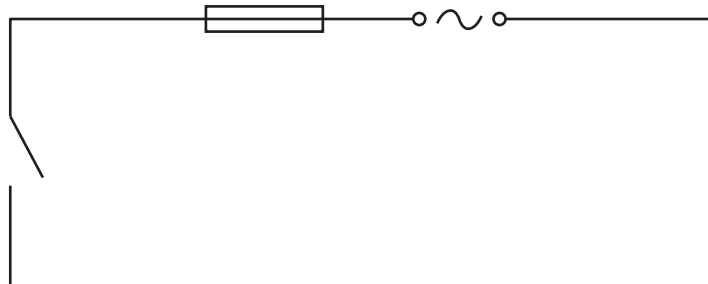



Fig. 9.2

- (a) When the shop is closed, the lamp is switched off, but the electric motor needs to continue to run the refrigerator to keep the contents cool.
- (i) On Fig. 9.2 complete the circuit diagram for the refrigerator that will allow the lamp to be switched off while the electric motor remains on. [3]

(ii) Name the circuit component with the symbol 

.....[1]

(b) The potential difference across the lamp is 240 V, and its power consumption is 40 W.

The potential difference across the motor is 240 V and its power consumption is 300 W.

Calculate the total current from the supply through the refrigerator.

State the formula you use and show your working.

formula

working

current = A [3]

BLANK PAGE

BLANK PAGE

Permission to reproduce items where third-party owned material protected by copyright is included has been sought and cleared where possible. Every reasonable effort has been made by the publisher (UCLES) to trace copyright holders, but if any items requiring clearance have unwittingly been included, the publisher will be pleased to make amends at the earliest possible opportunity.

To avoid the issue of disclosure of answer-related information to candidates, all copyright acknowledgements are reproduced online in the Cambridge International Examinations Copyright Acknowledgements Booklet. This is produced for each series of examinations and is freely available to download at www.cie.org.uk after the live examination series.

Cambridge International Examinations is part of the Cambridge Assessment Group. Cambridge Assessment is the brand name of University of Cambridge Local Examinations Syndicate (UCLES), which is itself a department of the University of Cambridge.

The Periodic Table of Elements

Group									
I	II	III	IV	V	VI	VII	VIII		
3 Li lithium 7	4 Be beryllium 9	5 B boron 11	6 C carbon 12	7 N nitrogen 14	8 O oxygen 16	9 F fluorine 19	10 Ne neon 20		
11 Na sodium 23	12 Mg magnesium 24	13 Al aluminium 27	14 Si silicon 28	15 P phosphorus 31	16 S sulfur 32	17 Cl chlorine 35.5	18 Ar argon 40		
19 K potassium 39	20 Ca calcium 40	21 Sc scandium 45	22 Ti titanium 48	23 V vanadium 51	24 Cr chromium 52	25 Mn manganese 55	26 Fe iron 56	27 Co cobalt 59	28 Ni nickel 59
37 Rb rubidium 85	38 Sr strontium 88	39 Y yttrium 89	40 Zr zirconium 91	41 Nb niobium 93	42 Mo molybdenum 96	43 Tc technetium —	44 Ru ruthenium 101	45 Rh rhodium 103	46 Pd palladium 106
55 Cs caesium 133	56 Ba barium 137	57–71 lanthanoids	72 Hf hafnium 178	73 Ta tantalum 181	74 W tungsten 184	75 Re rhenium 186	76 Os osmium 190	77 Ir iridium 192	78 Pt platinum 195
87 Fr francium —	88 Ra radium —	89–103 actinoids	104 Rf rutherfordium —	105 Db dubnium —	106 Sg seaborgium —	107 Bh bohrium —	108 Hs hassium —	109 Mt meitnerium —	110 Ds darmstadtium —
							111 Rg roentgenium —	112 Cn copernicium —	113 Nh nihonium —
							114 Fl flerovium —	115 Mc moscovium —	116 Lv livermorium —
							117 Ts tennessine —	118 Og oganesson —	119 Uue unbinetium —
							120 Ubn unbinetium —	121 Ubu unbinetium —	122 Ubn unbinetium —
							123 Ubn unbinetium —	124 Ubn unbinetium —	125 Ubn unbinetium —
							126 Ubn unbinetium —	127 Ubn unbinetium —	128 Ubn unbinetium —
							129 Ubn unbinetium —	130 Ubn unbinetium —	131 Ubn unbinetium —
							132 Ubn unbinetium —	133 Ubn unbinetium —	134 Ubn unbinetium —
							135 Ubn unbinetium —	136 Ubn unbinetium —	137 Ubn unbinetium —
							138 Ubn unbinetium —	139 Ubn unbinetium —	140 Ubn unbinetium —
							141 Ubn unbinetium —	142 Ubn unbinetium —	143 Ubn unbinetium —
							144 Ubn unbinetium —	145 Ubn unbinetium —	146 Ubn unbinetium —
							147 Ubn unbinetium —	148 Ubn unbinetium —	149 Ubn unbinetium —
							150 Ubn unbinetium —	151 Ubn unbinetium —	152 Ubn unbinetium —
							153 Ubn unbinetium —	154 Ubn unbinetium —	155 Ubn unbinetium —
							156 Ubn unbinetium —	157 Ubn unbinetium —	158 Ubn unbinetium —
							159 Ubn unbinetium —	160 Ubn unbinetium —	161 Ubn unbinetium —
							162 Ubn unbinetium —	163 Ubn unbinetium —	164 Ubn unbinetium —
							165 Ubn unbinetium —	166 Ubn unbinetium —	167 Ubn unbinetium —
							168 Ubn unbinetium —	169 Ubn unbinetium —	170 Ubn unbinetium —
							171 Ubn unbinetium —	172 Ubn unbinetium —	173 Ubn unbinetium —
							174 Ubn unbinetium —	175 Ubn unbinetium —	176 Ubn unbinetium —
							177 Ubn unbinetium —	178 Ubn unbinetium —	179 Ubn unbinetium —
							180 Ubn unbinetium —	181 Ubn unbinetium —	182 Ubn unbinetium —
							183 Ubn unbinetium —	184 Ubn unbinetium —	185 Ubn unbinetium —
							186 Ubn unbinetium —	187 Ubn unbinetium —	188 Ubn unbinetium —
							189 Ubn unbinetium —	190 Ubn unbinetium —	191 Ubn unbinetium —
							192 Ubn unbinetium —	193 Ubn unbinetium —	194 Ubn unbinetium —
							195 Ubn unbinetium —	196 Ubn unbinetium —	197 Ubn unbinetium —
							198 Ubn unbinetium —	199 Ubn unbinetium —	200 Ubn unbinetium —
							201 Ubn unbinetium —	202 Ubn unbinetium —	203 Ubn unbinetium —
							204 Ubn unbinetium —	205 Ubn unbinetium —	206 Ubn unbinetium —
							207 Ubn unbinetium —	208 Ubn unbinetium —	209 Ubn unbinetium —
							210 Ubn unbinetium —	211 Ubn unbinetium —	212 Ubn unbinetium —
							213 Ubn unbinetium —	214 Ubn unbinetium —	215 Ubn unbinetium —
							216 Ubn unbinetium —	217 Ubn unbinetium —	218 Ubn unbinetium —
							219 Ubn unbinetium —	220 Ubn unbinetium —	221 Ubn unbinetium —
							222 Ubn unbinetium —	223 Ubn unbinetium —	224 Ubn unbinetium —
							225 Ubn unbinetium —	226 Ubn unbinetium —	227 Ubn unbinetium —
							228 Ubn unbinetium —	229 Ubn unbinetium —	230 Ubn unbinetium —
							231 Ubn unbinetium —	232 Ubn unbinetium —	233 Ubn unbinetium —
							234 Ubn unbinetium —	235 Ubn unbinetium —	236 Ubn unbinetium —
							237 Ubn unbinetium —	238 Ubn unbinetium —	239 Ubn unbinetium —
							240 Ubn unbinetium —	241 Ubn unbinetium —	242 Ubn unbinetium —
							243 Ubn unbinetium —	244 Ubn unbinetium —	245 Ubn unbinetium —
							246 Ubn unbinetium —	247 Ubn unbinetium —	248 Ubn unbinetium —
							249 Ubn unbinetium —	250 Ubn unbinetium —	251 Ubn unbinetium —
							252 Ubn unbinetium —	253 Ubn unbinetium —	254 Ubn unbinetium —
							255 Ubn unbinetium —	256 Ubn unbinetium —	257 Ubn unbinetium —
							258 Ubn unbinetium —	259 Ubn unbinetium —	260 Ubn unbinetium —
							261 Ubn unbinetium —	262 Ubn unbinetium —	263 Ubn unbinetium —
							264 Ubn unbinetium —	265 Ubn unbinetium —	266 Ubn unbinetium —
							267 Ubn unbinetium —	268 Ubn unbinetium —	269 Ubn unbinetium —
							270 Ubn unbinetium —	271 Ubn unbinetium —	272 Ubn unbinetium —
							273 Ubn unbinetium —	274 Ubn unbinetium —	275 Ubn unbinetium —
							276 Ubn unbinetium —	277 Ubn unbinetium —	278 Ubn unbinetium —
							279 Ubn unbinetium —	280 Ubn unbinetium —	281 Ubn unbinetium —
							282 Ubn unbinetium —	283 Ubn unbinetium —	284 Ubn unbinetium —
							285 Ubn unbinetium —	286 Ubn unbinetium —	287 Ubn unbinetium —
							288 Ubn unbinetium —	289 Ubn unbinetium —	290 Ubn unbinetium —
							291 Ubn unbinetium —	292 Ubn unbinetium —	293 Ubn unbinetium —
							294 Ubn unbinetium —	295 Ubn unbinetium —	296 Ubn unbinetium —
							297 Ubn unbinetium —	298 Ubn unbinetium —	299 Ubn unbinetium —
							300 Ubn unbinetium —	301 Ubn unbinetium —	302 Ubn unbinetium —
							303 Ubn unbinetium —	304 Ubn unbinetium —	305 Ubn unbinetium —
							306 Ubn unbinetium —	307 Ubn unbinetium —	308 Ubn unbinetium —
							309 Ubn unbinetium —	310 Ubn unbinetium —	311 Ubn unbinetium —
							312 Ubn unbinetium —	313 Ubn unbinetium —	314 Ubn unbinetium —
							315 Ubn unbinetium —	316 Ubn unbinetium —	317 Ubn unbinetium —
							318 Ubn unbinetium —	319 Ubn unbinetium —	320 Ubn unbinetium —
							321 Ubn unbinetium —	322 Ubn unbinetium —	323 Ubn unbinetium —
							324 Ubn unbinetium —	325 Ubn unbinetium —	326 Ubn unbinetium —
							327 Ubn unbinetium —	328 Ubn unbinetium —	329 Ubn unbinetium —
							330 Ubn unbinetium —	331 Ubn unbinetium —	332 Ubn unbinetium —
							333 Ubn unbinetium —	334 Ubn unbinetium —	335 Ubn unbinetium —
							336 Ubn unbinetium —	337 Ubn unbinetium —	338 Ubn unbinetium —
							339 Ubn unbinetium —	340 Ubn unbinetium —	341 Ubn unbinetium —
							342 Ubn unbinetium —	343 Ubn unbinetium —	344 Ubn unbinetium —
							345 Ubn unbinetium —	346 Ubn unbinetium —	347 Ubn unbinetium —
							348 Ubn unbinetium —	349 Ubn unbinetium —	350 Ubn unbinetium —
							349 Ubn unbinetium —	350 Ubn unbinetium —	351 Ubn unbinetium —
							352 Ubn unbinetium —	353 Ubn unbinetium —	354 Ubn unbinetium —
							355 Ubn unbinetium —	356 Ubn unbinetium —	357 Ubn unbinetium —
							358 Ubn unbinetium —	359 Ubn unbinetium —	360 Ubn unbinetium —
							361 Ubn unbinetium —	362 Ubn unbinetium —	363 Ubn unbinetium —
							364 Ubn unbinetium —	365 Ubn unbinetium —	366 Ubn unbinetium —
							367 Ubn unbinetium —	368 Ubn unbinetium —	369 Ubn unbinetium —
							370 Ubn unbinetium —	371 Ubn unbinetium —	372 Ubn unbinetium —
							373 Ubn unbinetium —	374 Ubn unbinetium —	375 Ubn unbinetium —
							376 Ubn unbinetium —	377 Ubn unbinetium —	378 Ubn unbinetium —
							379 Ubn unbinetium —	380 Ubn unbinetium —	381 Ubn unbinetium —
							382 Ubn unbinetium —	383 Ubn unbinetium —	384 Ubn unbinetium —
							385 Ubn unbinetium —	386 Ubn unbinetium —	387 Ubn unbinetium —
							386 Ubn unbinetium —	387 Ubn unbinetium —	388 Ubn unbinetium —
							387 Ubn unbinetium —	388 Ubn unbinetium —	389 Ubn unbinetium —
							388 Ubn unbinetium —	389 Ubn unbinetium —	390 Ubn unbinetium —
							389 Ubn unbinetium —	390 Ubn unbinetium —	391 Ubn unbinetium —
							390 Ubn unbinetium —	391 Ubn unbinetium —	392 Ubn unbinetium —
							391 Ubn unbinetium —	392 Ubn unbinetium —	393 Ubn unbinetium —
							392 Ubn unbinetium —	393 Ubn unbinetium —	394 Ubn unbinetium —
							393 Ubn unbinetium —	394 Ubn unbinetium —	395 Ubn unbinetium —
							394 Ubn unbinetium —	395 Ubn un	