



Cambridge Assessment International Education
Cambridge International General Certificate of Secondary Education

CANDIDATE NAME

CENTRE NUMBER

CANDIDATE NUMBER



COMBINED SCIENCE **0653/32**
Paper 3 (Core) **February/March 2019**
1 hour 15 minutes

Candidates answer on the Question Paper.
No Additional Materials are required.

READ THESE INSTRUCTIONS FIRST

Write your centre number, candidate number and name on all the work you hand in.
Write in dark blue or black pen.
You may use an HB pencil for any diagrams or graphs.
Do not use staples, paper clips, glue or correction fluid.
DO NOT WRITE IN ANY BARCODES.

Answer **all** questions.
Electronic calculators may be used.
You may lose marks if you do not show your working or if you do not use appropriate units.
A copy of the Periodic Table is printed on page 20.

At the end of the examination, fasten all your work securely together.
The number of marks is given in brackets [] at the end of each question or part question.

This document consists of **19** printed pages and **1** blank page.

1 (a) Fig. 1.1 shows diagrams of two plant cells as seen using a light microscope.

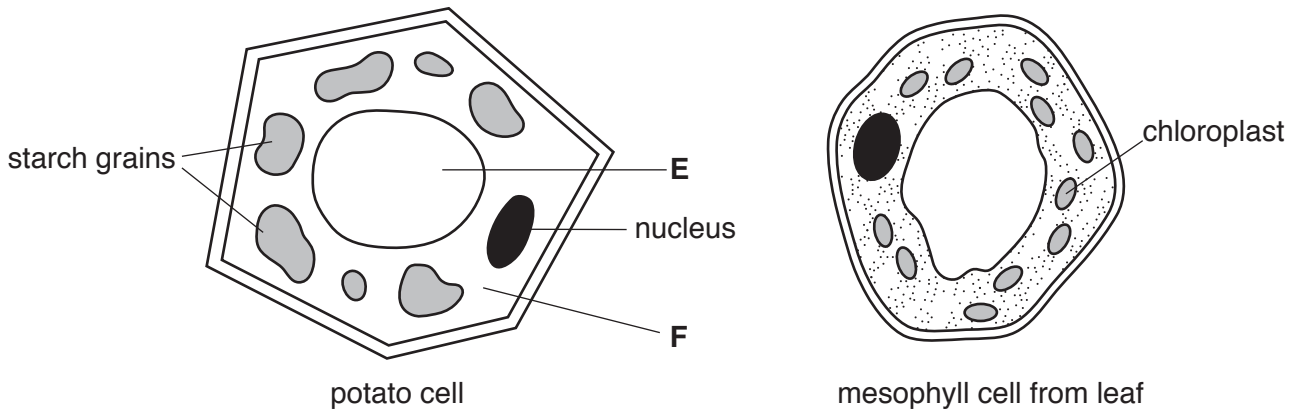


Fig. 1.1

(i) Name parts E and F in the potato cell.

E

F

[2]

(ii) Use Fig. 1.1 to describe **one** difference between the starch grains and the chloroplasts.

.....

..... [1]

(iii) Describe a chemical test and the positive result for starch.

test

positive result [2]

(b) (i) Starch is a carbohydrate.

Name the smaller molecules that join together to make a starch molecule.

..... [1]

(ii) Explain why starch must be broken down by chemical digestion.

.....

.....

..... [2]

(c) Fig. 1.2 shows a food chain in a garden.

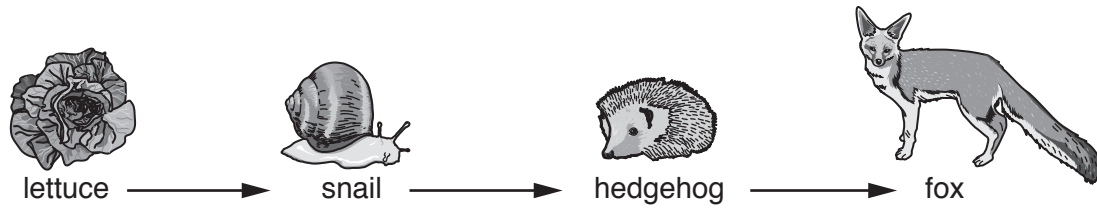


Fig. 1.2

Table 1.1 shows some words to describe some of the organisms in the food chain.

Place a tick (✓) in **all** boxes that correctly describe each organism.

Table. 1.1

organism	carnivore	consumer	herbivore	producer
lettuce				
snail				
hedgehog				

[3]

[Total: 11]

2 (a) Petroleum is a fossil fuel.

(i) State the name of **one** other fossil fuel.

..... [1]

(ii) State the name of the industrial process used to separate petroleum into useful products.

..... [1]

(iii) State **one** use for naphtha.

..... [1]

(b) Compound **X** and compound **Y** are obtained from petroleum.

The structures of molecules of these compounds are shown in Fig. 2.1.

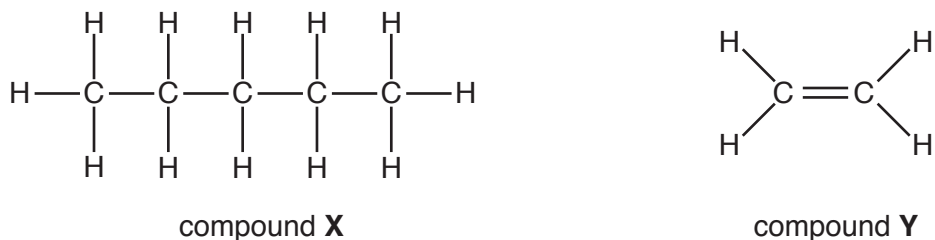


Fig. 2.1

(i) Name the group of saturated hydrocarbons that includes compound **X**.

..... [1]

(ii) Describe the changes, if any, that occur when compound **X** and compound **Y** are added to separate samples of aqueous bromine.

compound **X**

.....

compound **Y**

..... [3]

[Total: 7]

BLANK PAGE

3 Fig. 3.1 shows a boy throwing a ball up in the air.

The ball moves vertically upwards, then falls down and the boy catches it.



Fig. 3.1

Fig. 3.2 shows a graph of the motion of the ball from the time it leaves the boy's hand until he catches it.

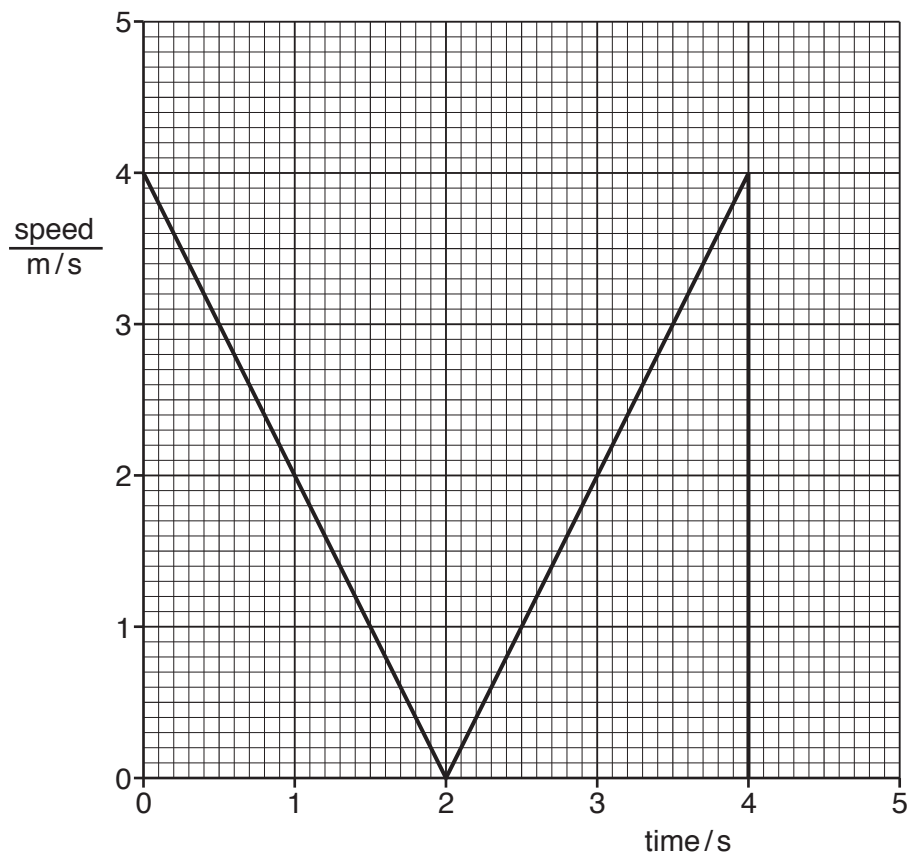


Fig. 3.2

(a) On Fig. 3.2, label with a letter **X** a point when the ball is moving upwards.

[1]

(b) (i) Use Fig. 3.2 to state how much time passes from when the ball is thrown to when it is caught.

..... s [1]

(ii) Use Fig. 3.2 to describe the motion of the ball between 3.0 s and 4.0 s.

.....
.....
.....
.....
..... [2]

(c) The ball has a mass of 0.62 kg.

Calculate the weight of the ball.

Gravitational field strength, $g = 10 \text{ N/kg}$

weight = N [1]

(d) Complete the sequence of energy transfers from when the boy throws the ball to when the ball reaches its maximum height.

..... energy in the boy

→ kinetic energy as the ball moves upwards

→ energy of the ball at its maximum height. [2]

[Total: 7]

4 Fig. 4.1 shows a diagram of the internal structure of the heart.

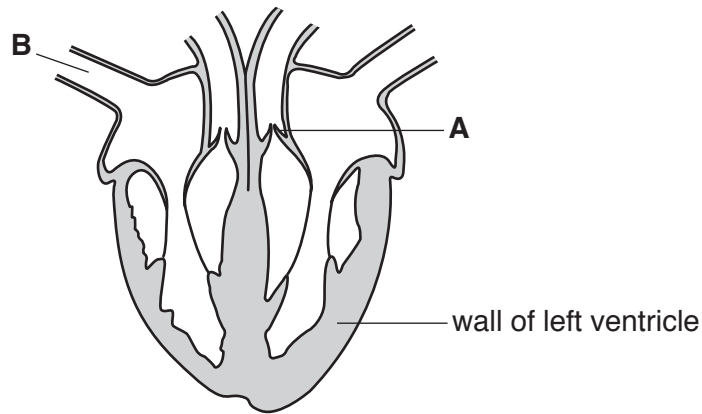


Fig. 4.1

(a) (i) Name structure **A** and state its function.

A

function

..... [2]

(ii) Name blood vessel **B**.

..... [1]

(b) (i) The blood in the left side of the heart contains more oxygen than blood in the right side of the heart.

Explain why there is this difference.

.....

..... [1]

(ii) Describe how oxygen is transported by the blood.

.....

.....

..... [2]

(c) A person's pulse can be taken to measure their heart rate.

(i) State what causes a person's pulse rate to increase when they are frightened.

.....
..... [1]

(ii) Suggest **one other** situation when a person's pulse rate increases.

..... [1]

[Total: 8]

5 (a) Sodium is a Group I metal.

An atom of sodium is represented by the symbol



(i) State the numbers of electrons, neutrons and protons in this atom.

electrons

neutrons

protons

[2]

(ii) The electronic structure of a sodium atom is shown in Fig. 5.1a.

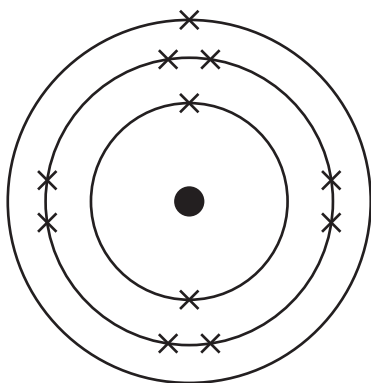


Fig. 5.1a

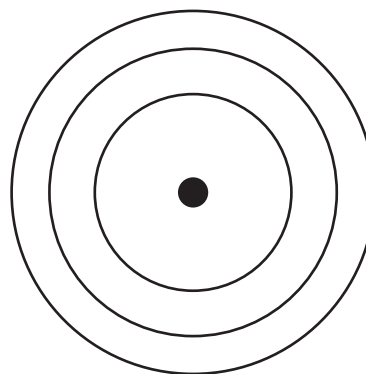


Fig. 5.1b

Complete Fig. 5.1b to show the electronic structure of a sodium ion.

[1]

(b) Apparatus used in the electrolysis of concentrated aqueous sodium chloride is shown in Fig. 5.2.

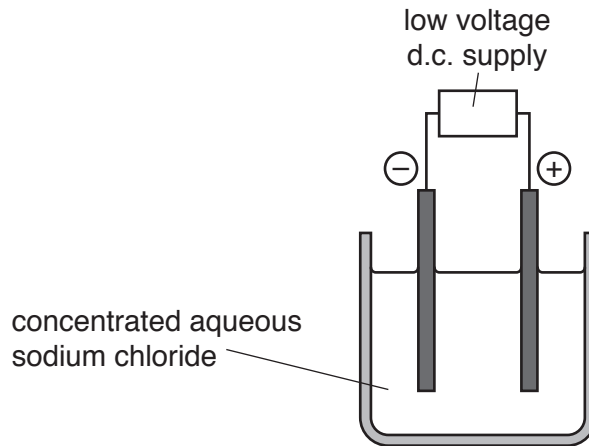


Fig. 5.2

Complete the sentences about the electrolysis of concentrated aqueous sodium chloride.

The concentrated aqueous sodium chloride is known as the

.....

The positive electrode is called the, and the negative electrode is called the

At the positive electrode forms and at the negative electrode forms.

[5]

(c) When a teacher adds a piece of sodium to a bowl of water, an exothermic reaction occurs.

The teacher uses Universal Indicator to test the solution in the bowl after the reaction.

(i) Describe a simple method that the teacher can use to show that the reaction is exothermic.

.....
.....
..... [2]

(ii) Describe and explain the effect of the solution in the bowl on the Universal Indicator.

effect.....

explanation.....

..... [2]

[Total: 12]

[Turn over

6 The bathroom in a house has an electric heater under the floor.

(a) Fig. 6.1 shows part of the circuit used for the heater.

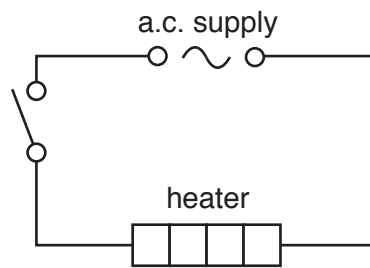


Fig. 6.1

A small lamp is connected in parallel with the heater to show that the circuit is switched on.

(i) Complete the circuit diagram in Fig. 6.1 using circuit symbols to show:

1. a fuse to protect the circuit from overload
2. the small lamp connected in parallel with the heater.

[3]

(ii) When the circuit is switched on, the current in the heater is 3A.

The current in the small lamp is 0.1A.

Draw a circle around the most suitable fuse to use in this circuit.

1A

3A

10A

13A

[1]

(b) The heater is placed underneath a wooden floor.

The heater is switched on, and the temperature of the heater quickly reaches 70 °C.

The temperature of the upper surface of the wooden floor increases slowly from 20 °C to 25 °C.

The temperature of the air in the bathroom also increases slowly from 20 °C to 25 °C.

Name the method of thermal energy transfer:

(i) through the wooden floor

..... [1]

(ii) in the air in the bathroom.

..... [1]

(c) The floor of the bathroom gets wet.

When the heater is switched on, the floor dries quickly.

Describe in terms of moving molecules how the floor dries.

.....
.....
..... [2]

(d) When the heater is switched off and the temperature drops, a small gap slowly appears between the edge of the wooden floor and the walls of the bathroom.

Predict what will happen when the heater is switched on again.

Explain your answer.

prediction

explanation

..... [2]

[Total: 10]

7 (a) Fig. 7.1 shows two diagrams of insect-pollinated flowers of the same species.

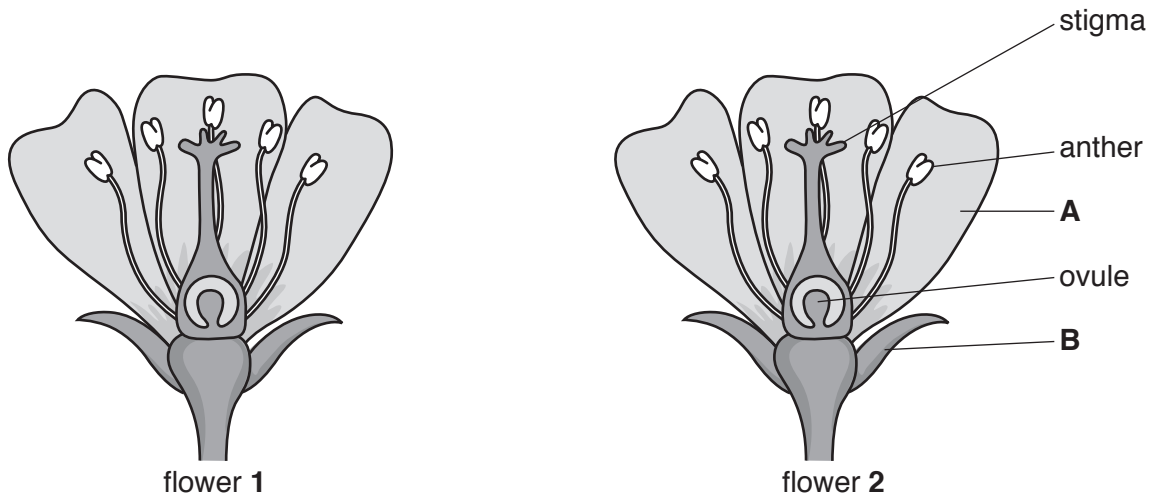


Fig. 7.1

(i) Name structures **A** and **B**.

A

B

[2]

(ii) During pollination, an insect takes pollen from flower 1 to flower 2.

On Fig. 7.1 draw an arrow (→) to show a possible path of the pollen from where it is produced in flower 1 to where it lands on flower 2. [2]

(iii) If pollination is successful fertilisation can follow.

State where fertilisation takes place in the flower.

..... [1]

(b) Seeds produced after fertilisation can germinate and produce new plants.

Fig. 7.2 shows the environmental conditions of three dishes **D**, **E** and **F**. Each dish contains cress seeds, on damp cotton wool.

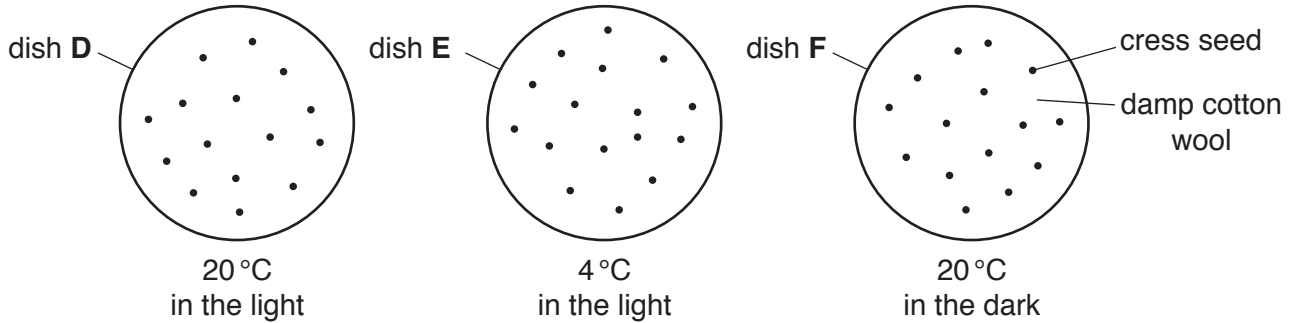


Fig. 7.2

After a few days the seeds in dish **D** germinate.

Predict whether the seeds germinate in dishes **E** and **F**.

Explain your answers.

dish **E**

prediction

explanation

.....

dish **F**

prediction

explanation

..... [2]

- (c) The germinated seeds in dish **D** are allowed to grow for a few days. They develop into seedlings as shown in Fig. 7.3.

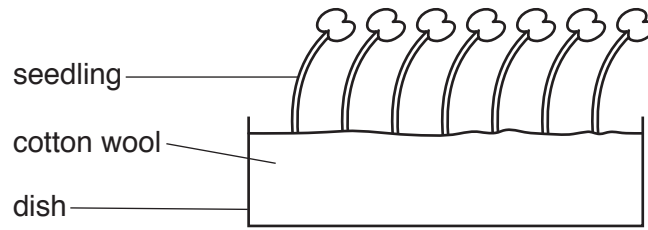


Fig. 7.3

Suggest why the seedlings do not grow straight upwards.

.....

.....

..... [1]

[Total: 8]

8 (a) Air is a mixture of elements and compounds.

(i) Describe the difference between an element and a compound. Use ideas about the atoms they contain in your answer.

element

.....

compound

..... [2]

(ii) Name **one** common pollutant in air.

State **one** adverse effect of this pollutant.

pollutant.....

effect..... [2]

(b) Iron nails rust when they are not protected from the air.

(i) Identify **two** substances in clean air required for iron to rust.

..... and [2]

(ii) Suggest **one** change that increases the rate of rusting of an iron nail.

.....

..... [1]

[Total: 7]

9 In many cities, sodium street lamps are used at night. These lamps produce an intense yellow light.

(a) A sodium lamp is lit using mains voltage of 240V. The current in the lamp is 0.5A.

Calculate the resistance of the lamp.

Show your working, and state the unit of your answer.

resistance = unit [3]

(b) A street is lit by four identical sodium lamps all connected to the same electricity supply. Three of the lamps are working, but one of the lamps is not.

Deduce the type of circuit connection used to connect the lamps to the electricity supply. Give a reason for your answer.

type of circuit connection:

reason:

..... [2]

(c) A sodium street lamp emits yellow light with a single wavelength.

(i) State the meaning of the term *wavelength*.

.....
..... [1]

(ii) Complete the sentences below using phrases from the list.

greater than less than the same as

Each phrase may be used once, more than once or not at all.

The frequency of visible light from the sodium lamp is than the frequency of infra-red radiation.

The speed of this visible light is the speed of infra-red radiation. [2]

(d) Fig. 9.1 shows a man looking at the reflection of a street lamp in a large puddle of water.

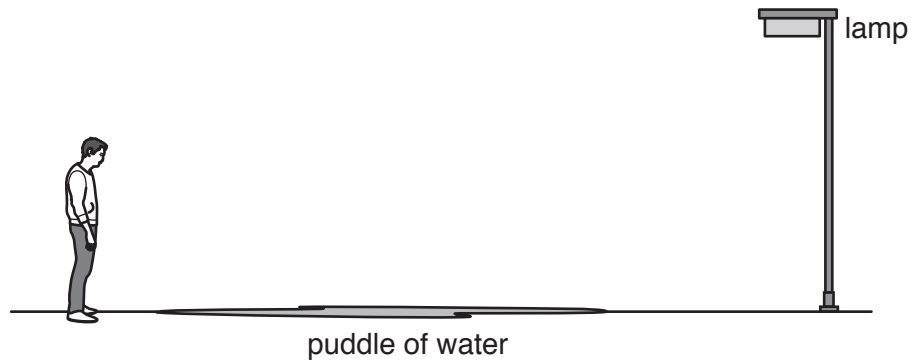


Fig. 9.1

On Fig. 9.1, use a ruler and protractor to draw a light ray travelling from the lamp to the man's eye to show how the light ray is reflected by the puddle. [2]

[Total: 10]

The Periodic Table of Elements

Group																				
I	II	III										IV	V	VI	VII	VIII				
3	4	1	2	3	4	5	6	7	8	9	10	11	12	13	14	15	16	17	18	
Li lithium 7	Be beryllium 9	H hydrogen 1	He helium 4																	
11	12	Key atomic number atomic symbol name relative atomic mass																		
Na sodium 23	Mg magnesium 24																			
19	20	21	22	23	24	25	26	27	28	29	30	31	32	33	34	35	36	37	38	
K potassium 39	Ca calcium 40	Sc scandium 45	Ti titanium 48	V vanadium 51	Cr chromium 52	Mn manganese 55	Fe iron 56	Co cobalt 59	Ni nickel 59	Cu copper 64	Zn zinc 65	Al aluminium 27	Ge germanium 73	As arsenic 75	Se selenium 79	Br bromine 80	Kr krypton 84	Rb rubidium 85	Sr strontium 88	
37	38	39	40	41	42	43	44	45	46	47	48	49	50	51	52	53	54	55	56	57-71
Rb rubidium 85	Sr strontium 88	Y yttrium 89	Zr zirconium 91	Nb niobium 93	Mo molybdenum 96	Tc technetium -	Ru ruthenium 101	Rh rhodium 103	Pd palladium 106	Ag silver 108	Cd cadmium 112	In indium 115	Sn tin 119	Sb antimony 122	Te tellurium 128	I iodine 127	Xe xenon 131	Cs cesium 133	Ba barium 137	lanthanoids
55	56	57-71	72	73	74	75	76	77	78	79	80	81	82	83	84	85	86	87	88	89-103
Cs cesium 133	Ba barium 137		Hf hafnium 178	Ta tantalum 181	W tungsten 184	Re rhenium 186	Os osmium 190	Ir iridium 192	Pt platinum 195	Au gold 197	Hg mercury 201	Tl thallium 204	Pb lead 207	Bi bismuth 209	Po polonium -	At astatine -	Rn radon -	Fr francium -	Ra radium -	actinoids
87	88	89-103	104	105	106	107	108	109	110	111	112	113	114	115	116	117	118	119	120	121
Fr francium -	Ra radium -		Rf rutherfordium -	Db dubnium -	Sg seaborgium -	Bh bohrium -	Hs hassium -	Mt meitnerium -	Ds darmstadtium -	Rg roentgenium -	Cn copernicium -		F1 flerovium -	Lv livermorium -						

lanthanoids

actinoids

57	58	59	60	61	62	63	64	65	66	67	68	69	70	71
La lanthanum 139	Ce cerium 140	Pr praseodymium 141	Nd neodymium 144	Pm promethium -	Sm samarium 150	Eu europium 152	Gd gadolinium 157	Tb terbium 159	Dy dysprosium 163	Ho holmium 165	Er erbium 167	Tm thulium 169	Yb ytterbium 173	Lu lutetium 175
89	90	91	92	93	94	95	96	97	98	99	100	101	102	103
Ac actinium -	Th thorium 232	Pa protactinium 231	U uranium 238	Np neptunium -	Pu plutonium -	Am americium -	Cm curium -	Bk berkelium -	Cf californium -	Es einsteinium -	Fm fermium -	Md mendelevium -	No nobelium -	Lr lawrencium -

The volume of one mole of any gas is 24 dm^3 at room temperature and pressure (r.t.p.).