



Cambridge International Examinations
Cambridge International General Certificate of Secondary Education

CANDIDATE
NAME

CENTRE
NUMBER

--	--	--	--	--

CANDIDATE
NUMBER

--	--	--	--



BIOLOGY

0610/33

Paper 3 Extended

October/November 2014

1 hour 15 minutes

Candidates answer on the Question Paper.

No Additional Materials are required.

READ THESE INSTRUCTIONS FIRST

Write your Centre number, candidate number and name on all the work you hand in.

Write in dark blue or black pen.

You may use an HB pencil for any diagrams or graphs.

Do not use staples, paper clips, glue or correction fluid.

DO NOT WRITE IN ANY BARCODES.

Answer **all** questions.

Electronic calculators may be used.

You may lose marks if you do not show your working or if you do not use appropriate units.

At the end of the examination, fasten all your work securely together.

The number of marks is given in brackets [] at the end of each question or part question.

The syllabus is approved for use in England, Wales and Northern Ireland as a Cambridge International Level 1/Level 2 Certificate.

This document consists of **17** printed pages and **3** blank pages.

BLANK PAGE

- (ii) Describe the effect of magnesium deficiency on the transport of sucrose out of the leaves and the sucrose concentration in the leaves.

transport of sucrose out of the leaves

.....
.....
.....
.....

concentration of sucrose in the leaves

.....
.....
.....
.....

[4]

- (iii) The plants in Group B remained in the magnesium-deficient solution for longer than 12 days. At the end of this time they showed symptoms of magnesium deficiency.

Describe and explain the symptoms that the plants would show.

.....
.....
.....
.....
.....

[3]

[Total: 16]

(b) Down's syndrome is an example of a characteristic that shows discontinuous variation.

State the cause of Down's syndrome.

.....
.....[1]

(c) Explain how discontinuous variation differs from continuous variation, in its expression and cause.

.....
.....
.....
.....
.....
.....
.....[3]

[Total: 13]

(i) Name structures **A**, **B** and **C**.

A

B

C [3]

(ii) State the process that is occurring at **D** and the process that is occurring at **E**.

D

E [2]

(iii) Suggest how the embryo is moved along the oviduct.

.....

.....

.....

..... [2]

[Total: 10]

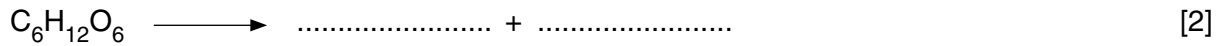
4 Yeast, *Saccharomyces cerevisiae*, is a single-celled fungus.

(a) State **one** reason why yeast is classified as a fungus and **not** as a bacterium.

.....
[1]

(b) A student investigated the anaerobic respiration of yeast to find out how the yeast population changed and how much alcohol was produced over a period of 14 hours.

Complete **and** balance the chemical equation for anaerobic respiration in yeast.



(c) The student set up a small fermenter containing:

- 1.0g dry yeast
- 250cm³ glucose solution
- a solution containing ammonium compounds as a source of nitrogen.

The fermenter is shown in Fig. 4.1.

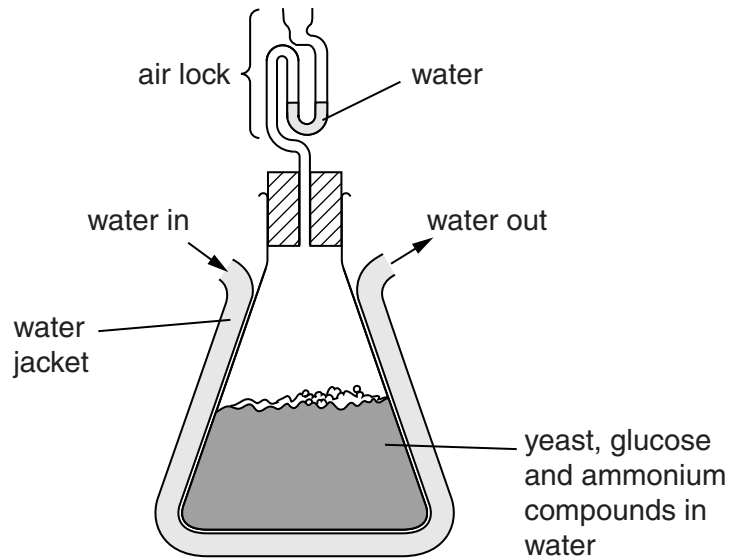


Fig. 4.1

Explain the importance of each of the following:

(i) the water jacket

.....

[2]

(ii) a source of nitrogen

.....
.....
.....
.....[2]

(iii) the air lock.

.....
.....
.....
.....[2]

(e) Name **two** industrial processes that rely on anaerobic respiration of yeast.

1.....

2.....[2]

[Total: 17]

- 5 (a) A researcher carried out four experiments, **A** to **D**, to investigate the effect of light intensity on the rate of photosynthesis of cucumber plants. The experiments were carried out at two concentrations of carbon dioxide and at two temperatures.

The results are shown in Fig. 5.1.

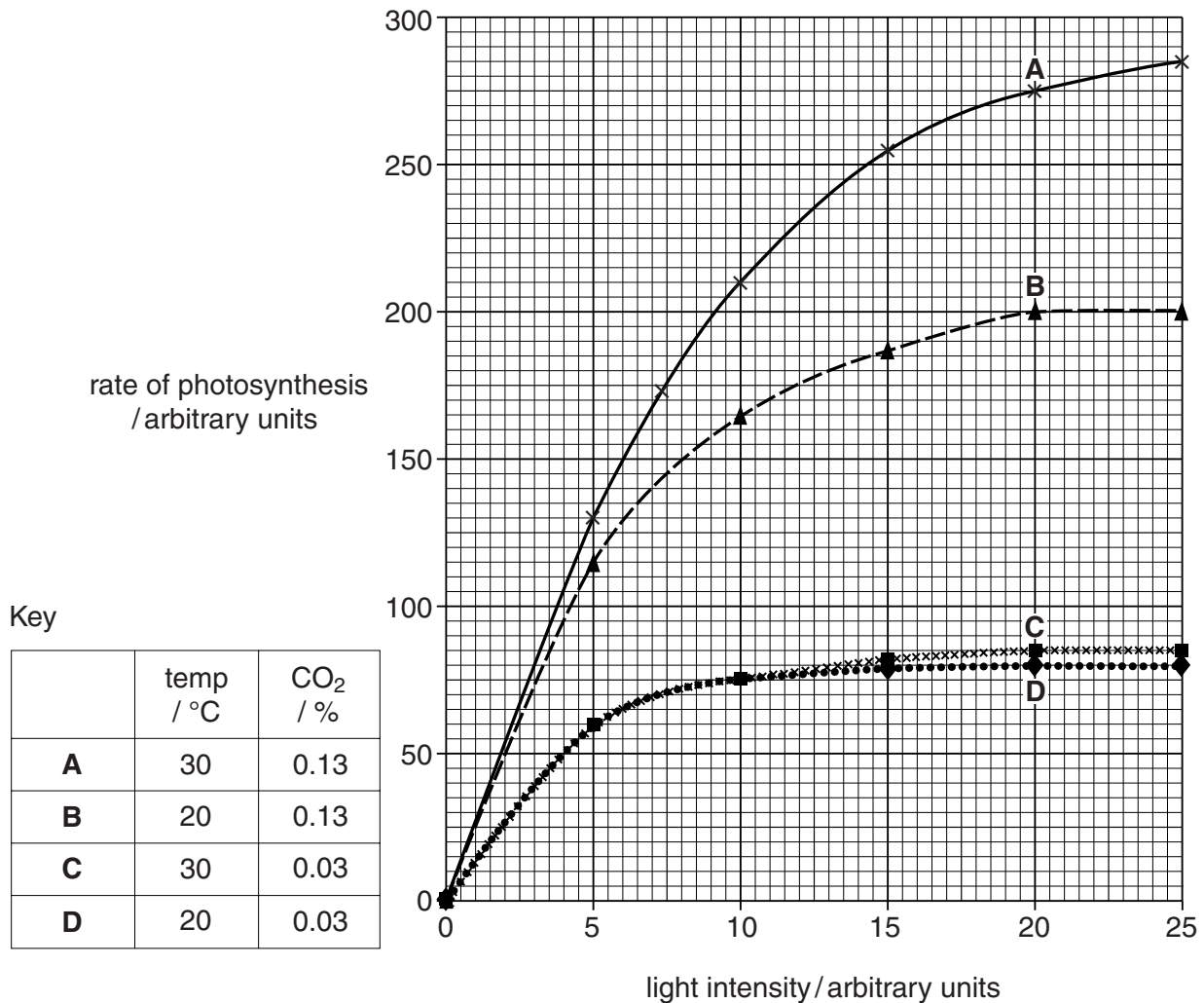


Fig. 5.1

- (i) Use the results in Fig. 5.1 to identify the limiting factor for the rate of photosynthesis at the light intensities given in Table 5.1.

Write your answers in Table 5.1.

Table 5.1

experiment	light intensity / arbitrary units	limiting factor
A	20	
B	20	
C	20	
D	5	light intensity

[3]

(ii) Define the term *limiting factor*.

.....

.....

.....

.....[2]

Fig. 5.1 shows that providing plants with more carbon dioxide can increase the rate of photosynthesis.

An investigation was carried out in China using crop residues and animal manure mixed together in composting units that were placed into a glasshouse containing crop plants.

Fig. 5.2 shows a composting unit in which decomposition takes place.

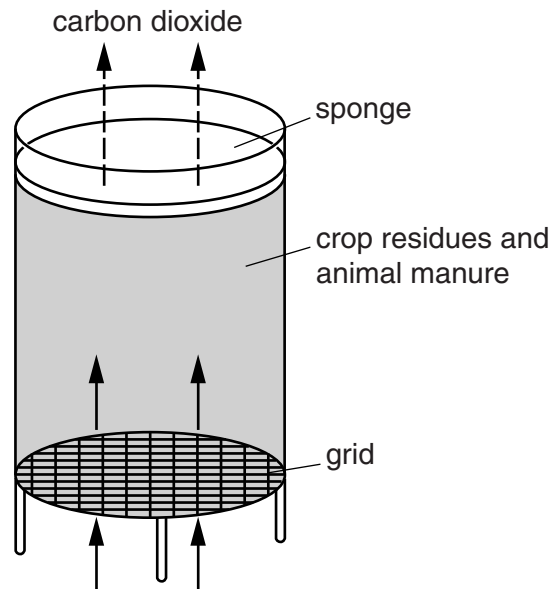


Fig. 5.2

(b) (i) Suggest the reason for using a grid instead of a solid base for the composting unit.

.....

.....

.....

.....[2]

- (ii) The sponge was soaked in sulfuric acid to remove any ammonia gas released by the decomposing material (compost).

Explain how the ammonia was produced.

.....

.....

.....

.....

.....[2]

- (c) Two glasshouses were used in this investigation. One glasshouse contained composting units and the other did not. Each glasshouse contained the same number and type of crop plants.

The concentration of carbon dioxide in both glasshouses was measured at midday.

The results are shown in Fig. 5.3.

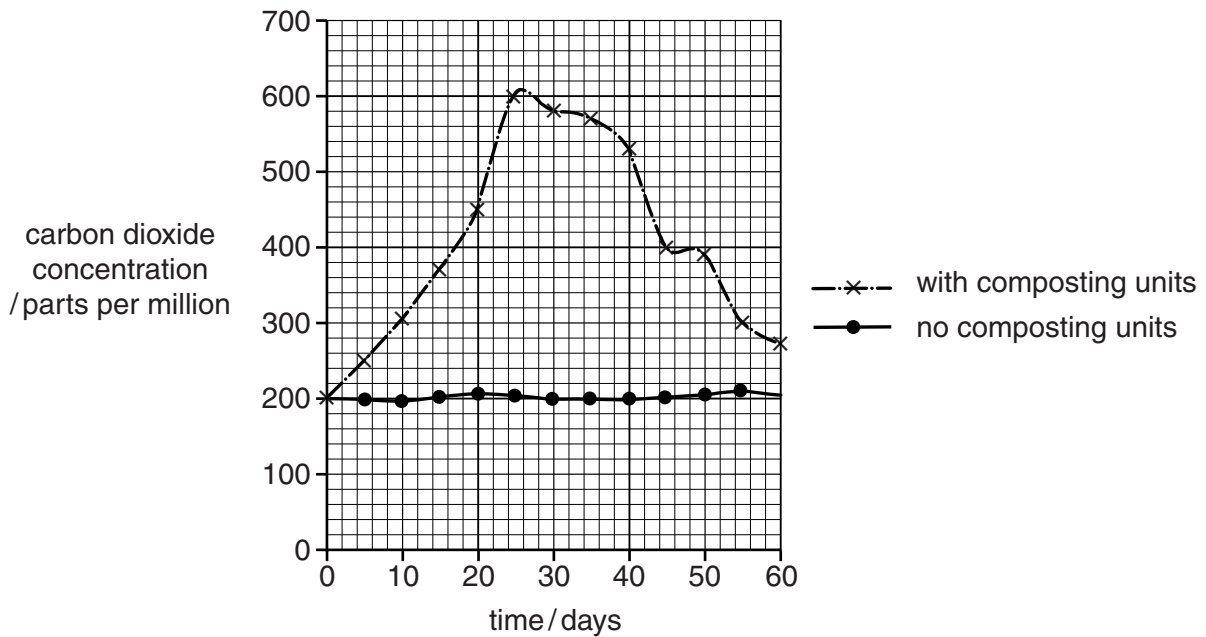


Fig. 5.3

- (i) State why a glasshouse without composting units was used in the investigation.

.....

.....

.....

.....[2]

6 Fig. 6.1 shows the movement of the ribs and the diaphragm during breathing in.

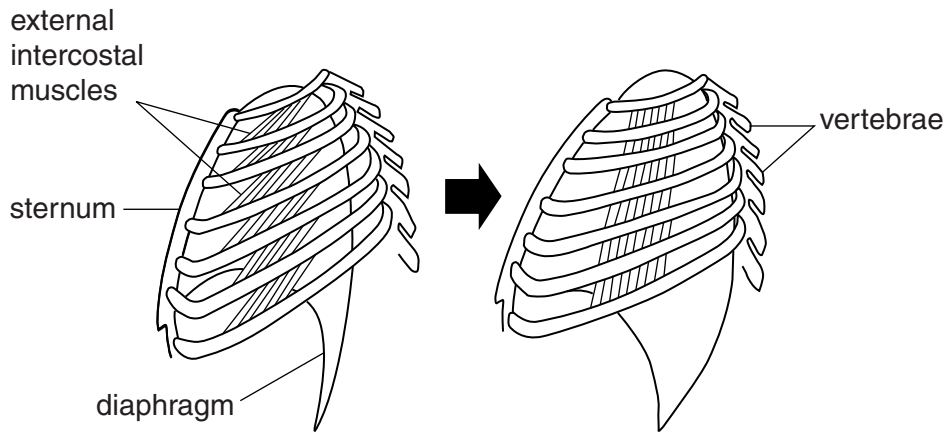


Fig. 6.1

(a) State what happens to the following structures during breathing in.

diaphragm.....
.....
.....

ribcage.....
.....
.....

external intercostal muscles
.....
.....[3]

(b) Explain the effect of strenuous physical activity on the pH of the blood.

.....
.....
.....
.....
.....
.....
.....
.....
.....
.....[3]

[Total: 6]

BLANK PAGE

Permission to reproduce items where third-party owned material protected by copyright is included has been sought and cleared where possible. Every reasonable effort has been made by the publisher (UCLES) to trace copyright holders, but if any items requiring clearance have unwittingly been included, the publisher will be pleased to make amends at the earliest possible opportunity.

Cambridge International Examinations is part of the Cambridge Assessment Group. Cambridge Assessment is the brand name of University of Cambridge Local Examinations Syndicate (UCLES), which is itself a department of the University of Cambridge.