



Cambridge International Examinations
Cambridge International General Certificate of Secondary Education

GEOGRAPHY

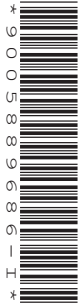
0460/12

Paper 1

May/June 2014

INSERT

1 hour 45 minutes



READ THESE INSTRUCTIONS FIRST

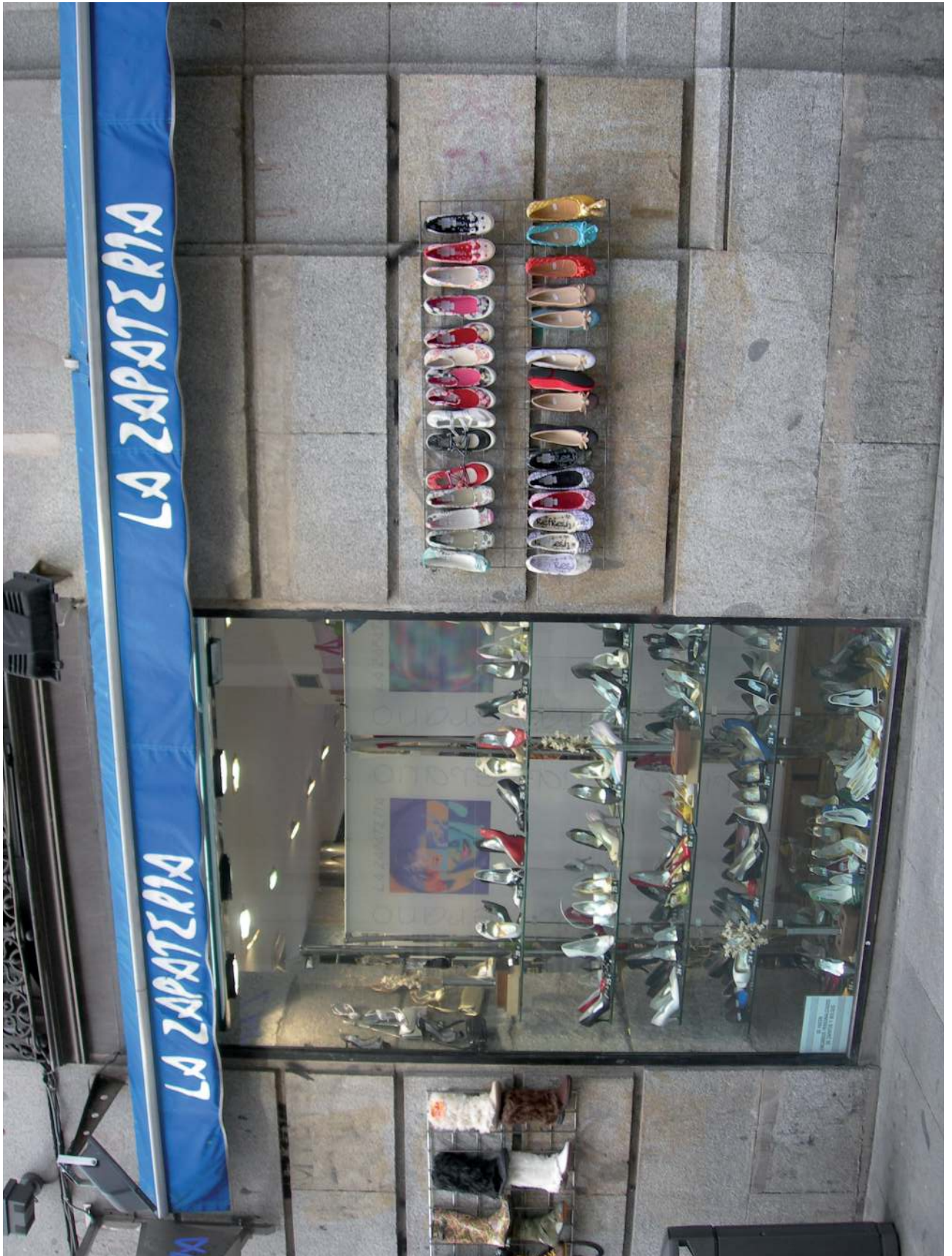
This Insert contains Photographs A, B and C for Question 2 and Photograph D for Question 4.

The Insert is **not** required by the Examiner.

The syllabus is approved for use in England, Wales and Northern Ireland as a Cambridge International Level 1/Level 2 Certificate.

This document consists of **5** printed pages and **3** blank pages.

Photograph A for Question 2



Photograph B for Question 2



Photograph C for Question 2



Photograph D for Question 4



BLANK PAGE

BLANK PAGE

BLANK PAGE

Copyright Acknowledgements:

Photographs A-D S Sibley © UCLES.
Question 1 Fig. 2 © http://www.biologicaldiversity.org/campaigns/overpopulation/extinction_and_population_graph.html
Question 2 Fig. 3 © <http://www.geographylwc.org.uk/GCSE/igcse/Settlement/sethierarchy.html>
Question 3 Fig. 4 Adapted from: © The Times; 20 July 2006.
Question 6 Fig. 9 © http://www.commodityandderivativeadv.com/andyftp/Coffee_20110331_rjo.pdf
Question 6 Fig. 10 © <http://www.spectrumcommodities.com/education/commodity/kc.html>

Permission to reproduce items where third-party owned material protected by copyright is included has been sought and cleared where possible. Every reasonable effort has been made by the publisher (UCLES) to trace copyright holders, but if any items requiring clearance have unwittingly been included, the publisher will be pleased to make amends at the earliest possible opportunity.

Cambridge International Examinations is part of the Cambridge Assessment Group. Cambridge Assessment is the brand name of University of Cambridge Local Examinations Syndicate (UCLES), which is itself a department of the University of Cambridge.