

Write your name here

Surname

Other names

**Pearson Edexcel**  
**International**  
**Advanced Level**

Centre Number

--	--	--	--	--

Candidate Number

--	--	--	--

# Core Mathematics C12

## Advanced Subsidiary

Tuesday 10 January 2017 – Morning  
**Time: 2 hours 30 minutes**

Paper Reference

**WMA01/01****You must have:**

Mathematical Formulae and Statistical Tables (Blue)

Total Marks

--

**Candidates may use any calculator allowed by the regulations of the Joint Council for Qualifications. Calculators must not have the facility for symbolic algebra manipulation, differentiation and integration, or have retrievable mathematical formulae stored in them.**

**Instructions**

- Use **black** ink or ball-point pen.
- If pencil is used for diagrams/sketches/graphs it must be dark (HB or B). Coloured pencils and highlighter pens must not be used.
- **Fill in the boxes** at the top of this page with your name, centre number and candidate number.
- Answer **all** questions and ensure that your answers to parts of questions are clearly labelled.
- Answer the questions in the spaces provided – *there may be more space than you need.*
- You should show sufficient working to make your methods clear. Answers without working may not gain full credit.
- When a calculator is used, the answer should be given to an appropriate degree of accuracy.

**Information**

- The total mark for this paper is 125.
- The marks for **each** question are shown in brackets – *use this as a guide as to how much time to spend on each question.*

**Advice**

- Read each question carefully before you start to answer it.
- Try to answer every question.
- Check your answers if you have time at the end.

Turn over ►

P48324A

©2017 Pearson Education Ltd.

1/1/1/



Pearson

1. Given  $y = \frac{x^3}{3} - 2x^2 + 3x + 5$

(a) find  $\frac{dy}{dx}$ , simplifying each term. (3)

(b) Hence find the set of values of  $x$  for which  $\frac{dy}{dx} > 0$  (4)

Handwriting lines for the solution of the problem.

DO NOT WRITE IN THIS AREA

DO NOT WRITE IN THIS AREA

DO NOT WRITE IN THIS AREA





2. A circle, with centre  $C$  and radius  $r$ , has equation

$$x^2 + y^2 - 8x + 4y - 12 = 0$$

Find

(a) the coordinates of  $C$ , (2)

(b) the exact value of  $r$ . (2)

The circle cuts the  $y$ -axis at the points  $A$  and  $B$ .

(c) Find the coordinates of the points  $A$  and  $B$ . (3)

---

---

---

---

---

---

---

---

---

---

---

---

---

---

---

---

---

---

---

---

---

---

---

---

---

---

---

---

---

---

DO NOT WRITE IN THIS AREA

DO NOT WRITE IN THIS AREA

DO NOT WRITE IN THIS AREA





3.

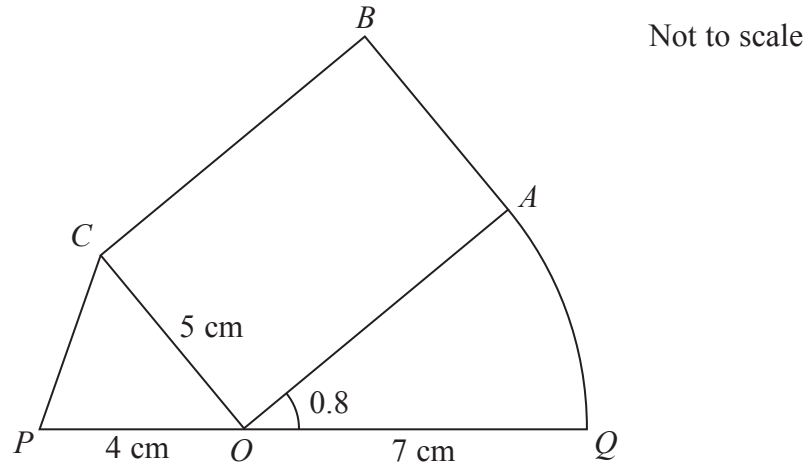


Figure 1

The shape  $POQABCP$ , as shown in Figure 1, consists of a triangle  $POC$ , a sector  $OQA$  of a circle with radius  $7\text{ cm}$  and centre  $O$ , joined to a rectangle  $OABC$ .

The points  $P$ ,  $O$  and  $Q$  lie on a straight line.

$PO = 4\text{ cm}$ ,  $CO = 5\text{ cm}$  and angle  $AOQ = 0.8$  radians.

- (a) Find the length of arc  $AQ$ . (2)
- (b) Find the size of angle  $POC$  in radians, giving your answer to 3 decimal places. (2)
- (c) Find the perimeter of the shape  $POQABCP$ , in cm, giving your answer to 2 decimal places. (4)

DO NOT WRITE IN THIS AREA

DO NOT WRITE IN THIS AREA

DO NOT WRITE IN THIS AREA



Question 3 continued

Lined writing area for the question response.

DO NOT WRITE IN THIS AREA

DO NOT WRITE IN THIS AREA

DO NOT WRITE IN THIS AREA

Q3

(Total 8 marks)



P 4 8 3 2 4 A 0 7 5 2







5. (a) Given that

$$y = \log_3 x$$

find expressions in terms of  $y$  for

(i)  $\log_3 \left( \frac{x}{9} \right)$

(ii)  $\log_3 \sqrt{x}$

Write each answer in its simplest form.

**(3)**

(b) Hence or otherwise solve

$$2\log_3 \left( \frac{x}{9} \right) - \log_3 \sqrt{x} = 2$$

**(4)**

DO NOT WRITE IN THIS AREA

DO NOT WRITE IN THIS AREA

DO NOT WRITE IN THIS AREA





**Question 5 continued**

Handwriting practice area with 25 horizontal lines.

DO NOT WRITE IN THIS AREA

DO NOT WRITE IN THIS AREA

DO NOT WRITE IN THIS AREA



**Question 5 continued**

DO NOT WRITE IN THIS AREA

DO NOT WRITE IN THIS AREA

DO NOT WRITE IN THIS AREA

Lined writing area for the answer to Question 5.

**(Total 7 marks)**

**Q5**



6.

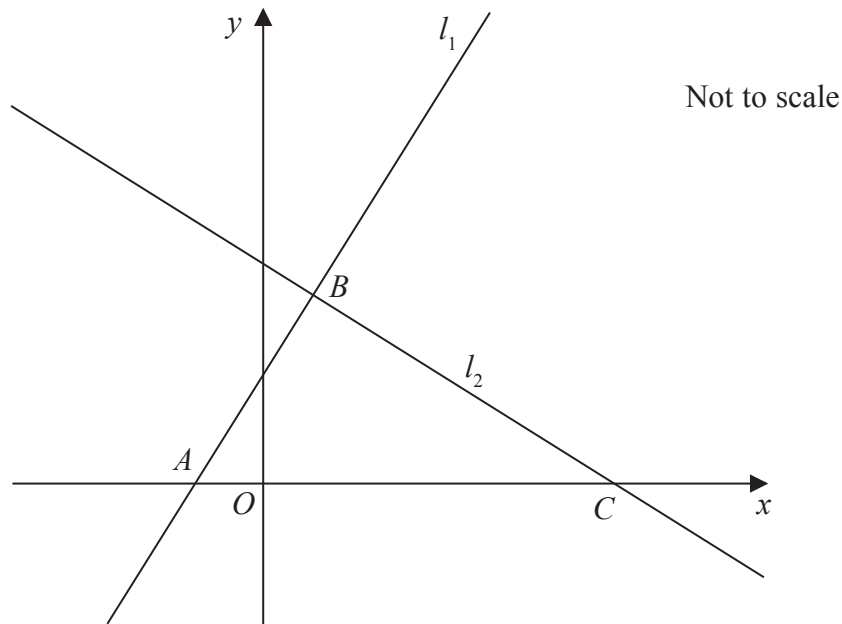


Figure 2

The straight line  $l_1$  has equation  $2y = 3x + 5$

The line  $l_1$  cuts the  $x$ -axis at the point  $A$ , as shown in Figure 2.

(a) (i) State the gradient of  $l_1$

(ii) Write down the  $x$  coordinate of point  $A$ .

(3)

Another straight line  $l_2$  intersects  $l_1$  at the point  $B$  with  $x$  coordinate 1 and crosses the  $x$ -axis at the point  $C$ , as shown in Figure 2.

Given that  $l_2$  is perpendicular to  $l_1$

(b) find an equation for  $l_2$  in the form  $ax + by + c = 0$ , where  $a$ ,  $b$  and  $c$  are integers,

(5)

(c) find the exact area of triangle  $ABC$ .

(3)

---



---



---



---



---



---



---



---



---



---



---



---

DO NOT WRITE IN THIS AREA

DO NOT WRITE IN THIS AREA

DO NOT WRITE IN THIS AREA











7. (i) Find

$$\int \frac{2 + 4x^3}{x^2} dx$$

giving each term in its simplest form.

(4)

(ii) Given that  $k$  is a constant and

$$\int_2^4 \left( \frac{4}{\sqrt{x}} + k \right) dx = 30$$

find the exact value of  $k$ .

(5)

---

---

---

---

---

---

---

---

---

---

---

---

---

---

---

---

---

---

---

---

---

---

---

---

---

---

---

---

DO NOT WRITE IN THIS AREA

DO NOT WRITE IN THIS AREA

DO NOT WRITE IN THIS AREA





**Question 7 continued**

Lined writing area for the answer to Question 7.

DO NOT WRITE IN THIS AREA

DO NOT WRITE IN THIS AREA

DO NOT WRITE IN THIS AREA







Leave  
blank

### Question 8 continued

Multiple horizontal lines for writing.

DO NOT WRITE IN THIS AREA

DO NOT WRITE IN THIS AREA

DO NOT WRITE IN THIS AREA



Leave  
blank

**Question 8 continued**

---

---

---

---

---

---

---

---

---

---

---

---

---

---

---

---

---

---

---

---

---

---

---

---

---

---

---

---

---

---

DO NOT WRITE IN THIS AREA

DO NOT WRITE IN THIS AREA

DO NOT WRITE IN THIS AREA







9.

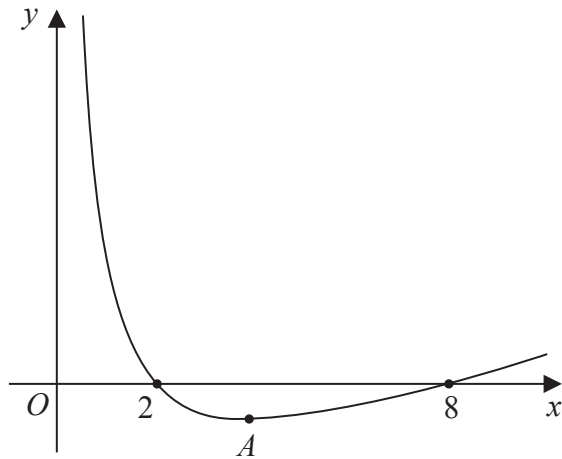


Figure 3

Figure 3 shows a sketch of the curve with equation  $y = f(x)$  where

$$f(x) = \frac{8}{x} + \frac{1}{2}x - 5, \quad 0 < x \leq 12$$

The curve crosses the  $x$ -axis at  $(2, 0)$  and  $(8, 0)$  and has a minimum point at  $A$ .

(a) Use calculus to find the coordinates of point  $A$ .

(5)

(b) State

(i) the roots of the equation  $2f(x) = 0$

(ii) the coordinates of the turning point on the curve  $y = f(x) + 2$

(iii) the roots of the equation  $f(4x) = 0$

(3)

---

---

---

---

---

---

---

---

---

---

---

---

---

---

---

DO NOT WRITE IN THIS AREA

DO NOT WRITE IN THIS AREA

DO NOT WRITE IN THIS AREA



Question 9 continued

Lined writing area for the answer to Question 9.

DO NOT WRITE IN THIS AREA

DO NOT WRITE IN THIS AREA

DO NOT WRITE IN THIS AREA



P 4 8 3 2 4 A 0 2 7 5 2





**10.** The first 3 terms, in ascending powers of  $x$ , in the binomial expansion of  $(1 + ax)^{20}$  are given by

$$1 + 4x + px^2$$

where  $a$  and  $p$  are constants.

(a) Find the value of  $a$ . (2)

(b) Find the value of  $p$ . (2)

One of the terms in the binomial expansion of  $(1 + ax)^{20}$  is  $qx^4$ , where  $q$  is a constant.

(c) Find the value of  $q$ . (2)

---

---

---

---

---

---

---

---

---

---

---

---

---

---

---

---

---

---

---

---

---

---

---

---

---

DO NOT WRITE IN THIS AREA



**Question 10 continued**

Area with 30 horizontal lines for writing the answer to Question 10.

DO NOT WRITE IN THIS AREA

DO NOT WRITE IN THIS AREA

DO NOT WRITE IN THIS AREA









11. In this question solutions based entirely on graphical or numerical methods are not acceptable.

(i) Solve, for  $0 \leq x < 2\pi$ ,

$$3 \cos^2 x + 1 = 4 \sin^2 x$$

giving your answers in radians to 2 decimal places.

(5)

(ii) Solve, for  $0 \leq \theta < 360^\circ$ ,

$$5 \sin(\theta + 10^\circ) = \cos(\theta + 10^\circ)$$

giving your answers in degrees to one decimal place.

(5)

---

---

---

---

---

---

---

---

---

---

---

---

---

---

---

---

---

---

---

---

---

---

---

---

---

---

---

---

---

---

DO NOT WRITE IN THIS AREA

DO NOT WRITE IN THIS AREA

DO NOT WRITE IN THIS AREA





Leave blank

**Question 11 continued**

Lined area for student response, consisting of numerous horizontal lines.

DO NOT WRITE IN THIS AREA

DO NOT WRITE IN THIS AREA

DO NOT WRITE IN THIS AREA





12.

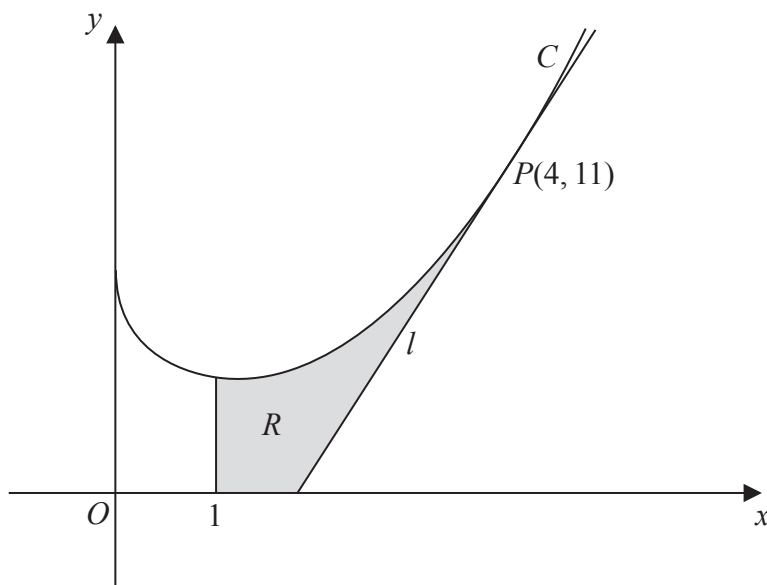


Figure 4

Figure 4 shows a sketch of part of the curve  $C$  with equation

$$y = \frac{3}{4}x^2 - 4\sqrt{x} + 7, \quad x > 0$$

The point  $P$  lies on  $C$  and has coordinates  $(4, 11)$ .

Line  $l$  is the tangent to  $C$  at the point  $P$ .

- (a) Use calculus to show that  $l$  has equation  $y = 5x - 9$  (5)

The finite region  $R$ , shown shaded in Figure 4, is bounded by the curve  $C$ , the line  $x = 1$ , the  $x$ -axis and the line  $l$ .

- (b) Find, by using calculus, the area of  $R$ , giving your answer to 2 decimal places. (6)

*(Solutions based entirely on graphical or numerical methods are not acceptable.)*

---

---

---

---

---

---

---

---

---

---

---

---

---

---

---

DO NOT WRITE IN THIS AREA

DO NOT WRITE IN THIS AREA

DO NOT WRITE IN THIS AREA



**Question 12 continued**

Lined writing area for question continuation.

DO NOT WRITE IN THIS AREA

DO NOT WRITE IN THIS AREA

DO NOT WRITE IN THIS AREA



P 4 8 3 2 4 A 0 3 9 5 2





Question 12 continued

DO NOT WRITE IN THIS AREA

DO NOT WRITE IN THIS AREA

DO NOT WRITE IN THIS AREA

Q12

(Total 11 marks)



P 4 8 3 2 4 A 0 4 1 5 2

13. (a) On separate axes sketch the graphs of

(i)  $y = c^2 - x^2$

(ii)  $y = x^2(x - 3c)$

where  $c$  is a positive constant.

Show clearly the coordinates of the points where each graph crosses or meets the  $x$ -axis and the  $y$ -axis.

(5)

(b) Prove that the  $x$  coordinate of any point of intersection of

$$y = c^2 - x^2 \text{ and } y = x^2(x - 3c)$$

where  $c$  is a positive constant, is given by a solution of the equation

$$x^3 + (1 - 3c)x^2 - c^2 = 0$$

(2)

Given that the graphs meet when  $x = 2$

(c) find the exact value of  $c$ , writing your answer as a fully simplified surd.

(4)

DO NOT WRITE IN THIS AREA

DO NOT WRITE IN THIS AREA

DO NOT WRITE IN THIS AREA



Question 13 continued

DO NOT WRITE IN THIS AREA

DO NOT WRITE IN THIS AREA

DO NOT WRITE IN THIS AREA

---

---

---

---

---

---

---

---

---

---

---

---

---

---

---

---

---

---

---

---

---

---

---

---

---

---

---

---

---

---







14. A geometric series has a first term  $a$  and a common ratio  $r$ .

(a) Prove that the sum of the first  $n$  terms of this series is given by

$$S_n = \frac{a(1 - r^n)}{1 - r}$$

(4)

A liquid is to be stored in a barrel.

Due to evaporation, the volume of the liquid in a barrel at the end of a year is 7% less than the volume at the start of the year.

At the start of the first year, a barrel is filled with 180 litres of the liquid.

(b) Show that the amount of the liquid in this barrel at the end of 5 years is approximately 125.2 litres.

(2)

At the start of each year a new identical barrel is filled with 180 litres of the liquid so that, at the end of 20 years, there are 20 barrels containing varying amounts of the liquid.

(c) Calculate the total amount of the liquid, to the nearest litre, in the 20 barrels at the end of 20 years.

(3)

---

---

---

---

---

---

---

---

---

---

---

---

---

---

---

---

---

---

---

---

---

---

---

DO NOT WRITE IN THIS AREA

DO NOT WRITE IN THIS AREA

DO NOT WRITE IN THIS AREA



**Question 14 continued**

Lined area for writing the answer to Question 14.

DO NOT WRITE IN THIS AREA

DO NOT WRITE IN THIS AREA

DO NOT WRITE IN THIS AREA







Leave  
blank

**Question 14 continued**

Lined area for writing the answer to Question 14.

DO NOT WRITE IN THIS AREA

DO NOT WRITE IN THIS AREA

DO NOT WRITE IN THIS AREA

**Q14**

**(Total 9 marks)**



15.

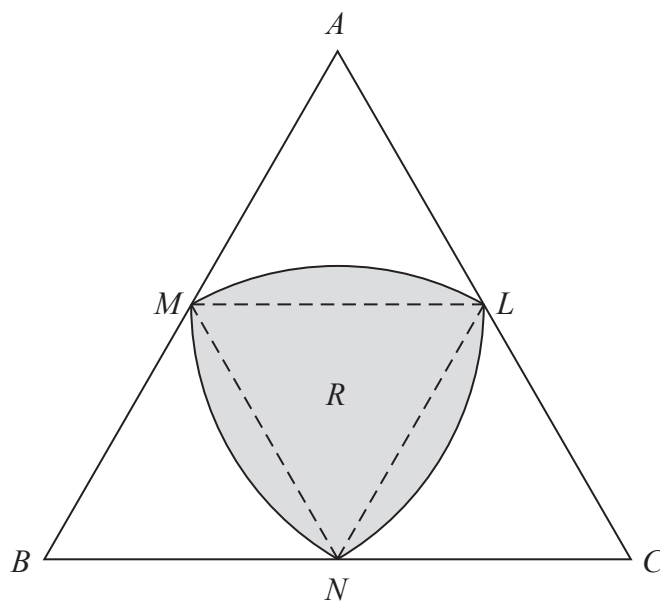


Figure 5

Figure 5 shows the design for a logo.

The logo is in the shape of an equilateral triangle  $ABC$  of side length  $2r$  cm, where  $r$  is a constant.

The points  $L$ ,  $M$  and  $N$  are the midpoints of sides  $AC$ ,  $AB$  and  $BC$  respectively.

The shaded section  $R$ , of the logo, is bounded by three curves  $MN$ ,  $NL$  and  $LM$ .

The curve  $MN$  is the arc of a circle centre  $L$ , radius  $r$  cm.

The curve  $NL$  is the arc of a circle centre  $M$ , radius  $r$  cm.

The curve  $LM$  is the arc of a circle centre  $N$ , radius  $r$  cm.

Find, in  $\text{cm}^2$ , the area of  $R$ . Give your answer in the form  $kr^2$ , where  $k$  is an exact constant to be determined.

(5)

---

---

---

---

---

---

---

---

---

---

---

---

---

---

---

---

---

---

---

---

---

---

---

---

---

---



Question 15 continued

Handwriting practice area consisting of multiple horizontal lines.

DO NOT WRITE IN THIS AREA

DO NOT WRITE IN THIS AREA

DO NOT WRITE IN THIS AREA



Leave blank

Question 15 continued

Lined writing area for the answer to Question 15.

(Total 5 marks)

Q15

TOTAL FOR PAPER: 125 MARKS

END

DO NOT WRITE IN THIS AREA

DO NOT WRITE IN THIS AREA

DO NOT WRITE IN THIS AREA

