

MATHEMATICS

9709/43

Paper 4 Mechanics 1 (M1)

May/June 2014

1 hour 15 minutes

Additional Materials: Answer Booklet/Paper
 Graph Paper
 List of Formulae (MF9)



READ THESE INSTRUCTIONS FIRST

If you have been given an Answer Booklet, follow the instructions on the front cover of the Booklet.

Write your Centre number, candidate number and name on all the work you hand in.

Write in dark blue or black pen.

You may use an HB pencil for any diagrams or graphs.

Do not use staples, paper clips, glue or correction fluid.

DO **NOT** WRITE IN ANY BARCODES.

Answer **all** the questions.

Give non-exact numerical answers correct to 3 significant figures, or 1 decimal place in the case of angles in degrees, unless a different level of accuracy is specified in the question.

Where a numerical value for the acceleration due to gravity is needed, use 10 m s^{-2} .

The use of an electronic calculator is expected, where appropriate.

You are reminded of the need for clear presentation in your answers.

At the end of the examination, fasten all your work securely together.

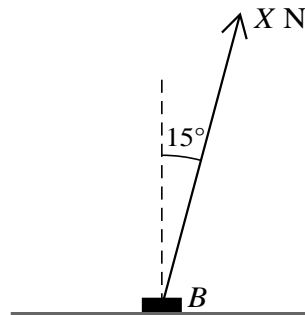
The number of marks is given in brackets [] at the end of each question or part question.

The total number of marks for this paper is 50.

Questions carrying smaller numbers of marks are printed earlier in the paper, and questions carrying larger numbers of marks later in the paper.

This document consists of 4 printed pages.

1

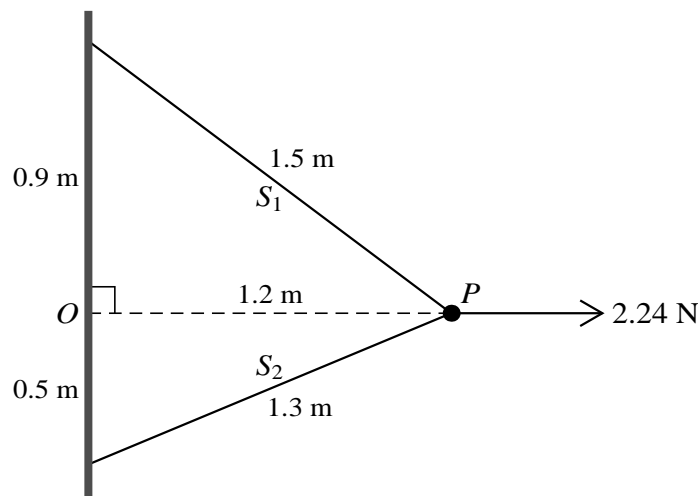


A block B of mass 7 kg is at rest on rough horizontal ground. A force of magnitude X N acts on B at an angle of 15° to the upward vertical (see diagram).

- (i) Given that B is in equilibrium find, in terms of X , the normal component of the force exerted on B by the ground. [2]
- (ii) The coefficient of friction between B and the ground is 0.4 . Find the value of X for which B is in limiting equilibrium. [3]

- 2 A car of mass 1250 kg travels up a straight hill inclined at an angle α to the horizontal, where $\sin \alpha = 0.02$. The power provided by the car's engine is 23 kW. The resistance to motion is constant and equal to 600 N. Find the speed of the car at an instant when its acceleration is 0.5 m s⁻². [5]

3



A particle P of weight 1.4 N is attached to one end of a light inextensible string S_1 of length 1.5 m, and to one end of another light inextensible string S_2 of length 1.3 m. The other end of S_1 is attached to a wall at the point 0.9 m vertically above a point O of the wall. The other end of S_2 is attached to the wall at the point 0.5 m vertically below O . The particle is held in equilibrium, at the same horizontal level as O , by a horizontal force of magnitude 2.24 N acting away from the wall and perpendicular to it (see diagram). Find the tensions in the strings. [6]

- 4 A small ball of mass 0.4 kg is released from rest at a point 5 m above horizontal ground. At the instant the ball hits the ground it loses 12.8 J of kinetic energy and starts to move upwards.

- (i) Show that the greatest height above the ground that the ball reaches after hitting the ground is 1.8 m. [4]
- (ii) Find the time taken for the ball's motion from its release until reaching this greatest height. [3]

- 5 A lorry of mass 16 000 kg travels at constant speed from the bottom, O , to the top, A , of a straight hill. The distance OA is 1200 m and A is 18 m above the level of O . The driving force of the lorry is constant and equal to 4500 N.

- (i) Find the work done against the resistance to the motion of the lorry. [3]

On reaching A the lorry continues along a straight horizontal road against a constant resistance of 2000 N. The driving force of the lorry is not now constant, and the speed of the lorry increases from 9 m s^{-1} at A to 21 m s^{-1} at the point B on the road. The distance AB is 2400 m.

- (ii) Use an energy method to find F , where $F \text{ N}$ is the average value of the driving force of the lorry while moving from A to B . [3]
- (iii) Given that the driving force at A is 1280 N greater than $F \text{ N}$ and that the driving force at B is 1280 N less than $F \text{ N}$, show that the power developed by the lorry's engine is the same at B as it is at A . [2]

- 6 A particle starts from rest at a point O and moves in a horizontal straight line. The velocity of the particle is $v \text{ m s}^{-1}$ at time $t \text{ s}$ after leaving O . For $0 \leq t < 60$, the velocity is given by

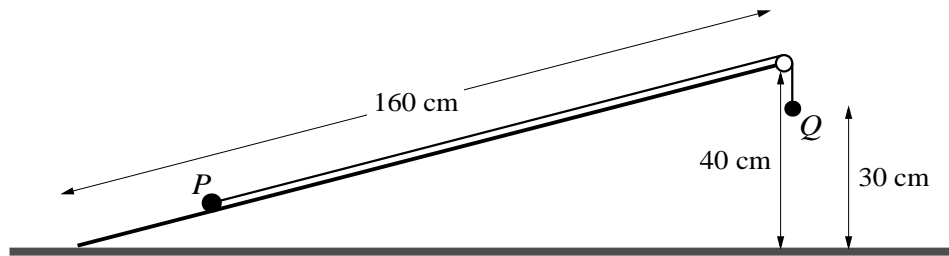
$$v = 0.05t - 0.0005t^2.$$

The particle hits a wall at the instant when $t = 60$, and reverses the direction of its motion. The particle subsequently comes to rest at the point A when $t = 100$, and for $60 < t \leq 100$ the velocity is given by

$$v = 0.025t - 2.5.$$

- (i) Find the velocity of the particle immediately before it hits the wall, and its velocity immediately after it hits the wall. [2]
- (ii) Find the total distance travelled by the particle. [4]
- (iii) Find the maximum speed of the particle and sketch the particle's velocity-time graph for $0 \leq t \leq 100$, showing the value of t for which the speed is greatest. [4]

[Question 7 is printed on the next page.]



A smooth inclined plane of length 160 cm is fixed with one end at a height of 40 cm above the other end, which is on horizontal ground. Particles P and Q , of masses 0.76 kg and 0.49 kg respectively, are attached to the ends of a light inextensible string which passes over a small smooth pulley fixed at the top of the plane. Particle P is held at rest on the same line of greatest slope as the pulley and Q hangs vertically below the pulley at a height of 30 cm above the ground (see diagram). P is released from rest. It starts to move up the plane and does not reach the pulley. Find

- (i) the acceleration of the particles and the tension in the string before Q reaches the ground, [4]
- (ii) the speed with which Q reaches the ground, [2]
- (iii) the total distance travelled by P before it comes to instantaneous rest. [3]