



Cambridge International AS & A Level

INFORMATION TECHNOLOGY

9626/02

Paper 2 Practical

October/November 2020

MARK SCHEME

Maximum Mark: 110

Published

This mark scheme is published as an aid to teachers and candidates, to indicate the requirements of the examination. It shows the basis on which Examiners were instructed to award marks. It does not indicate the details of the discussions that took place at an Examiners' meeting before marking began, which would have considered the acceptability of alternative answers.

Mark schemes should be read in conjunction with the question paper and the Principal Examiner Report for Teachers.

Cambridge International will not enter into discussions about these mark schemes.

Cambridge International is publishing the mark schemes for the October/November 2020 series for most Cambridge IGCSE™, Cambridge International A and AS Level and Cambridge Pre-U components, and some Cambridge O Level components.

This document consists of **36** printed pages.

Generic Marking Principles

These general marking principles must be applied by all examiners when marking candidate answers. They should be applied alongside the specific content of the mark scheme or generic level descriptors for a question. Each question paper and mark scheme will also comply with these marking principles.

GENERIC MARKING PRINCIPLE 1:

Marks must be awarded in line with:

- the specific content of the mark scheme or the generic level descriptors for the question
- the specific skills defined in the mark scheme or in the generic level descriptors for the question
- the standard of response required by a candidate as exemplified by the standardisation scripts.

GENERIC MARKING PRINCIPLE 2:

Marks awarded are always **whole marks** (not half marks, or other fractions).

GENERIC MARKING PRINCIPLE 3:

Marks must be awarded **positively**:

- marks are awarded for correct/valid answers, as defined in the mark scheme. However, credit is given for valid answers which go beyond the scope of the syllabus and mark scheme, referring to your Team Leader as appropriate
- marks are awarded when candidates clearly demonstrate what they know and can do
- marks are not deducted for errors
- marks are not deducted for omissions
- answers should only be judged on the quality of spelling, punctuation and grammar when these features are specifically assessed by the question as indicated by the mark scheme. The meaning, however, should be unambiguous.

GENERIC MARKING PRINCIPLE 4:

Rules must be applied consistently, e.g. in situations where candidates have not followed instructions or in the application of generic level descriptors.

GENERIC MARKING PRINCIPLE 5:

Marks should be awarded using the full range of marks defined in the mark scheme for the question (however; the use of the full mark range may be limited according to the quality of the candidate responses seen).

GENERIC MARKING PRINCIPLE 6:

Marks awarded are based solely on the requirements as defined in the mark scheme. Marks should not be awarded with grade thresholds or grade descriptors in mind.

Task 1 – Stage_ Spreadsheet formatting

A Candidate, ZZ999, 9999

| | A | B | C | D | E | F | G | H | I | J | K | L | M | N | |
|----|--|----------|---|-----------------------|----------|----------|----------|----------|----------|----------|----------|----------|----------|----------|--|
| 1 | | | | Departure time | | | | | | | | | | | |
| 2 | | | | 05:00:00 | 05:20:00 | 05:40:00 | 06:00:00 | 06:20:00 | 06:40:00 | 07:00:00 | 07:20:00 | 07:40:00 | 08:00:00 | 08:20:00 | |
| 3 | | | Arrival time in | | | | | | | | | | | | |
| 4 | Expected time for this stage of the journey | 00:15:00 | Accramzi | 00:15:29 | 00:23:41 | 00:14:56 | 00:14:54 | 00:15:44 | 00:14:42 | 00:15:09 | 00:15:07 | 00:15:23 | 00:15:34 | 00:15:16 | |
| 5 | | 00:07:00 | Banghazi | 00:07:20 | 00:08:18 | 00:07:10 | 00:07:00 | 00:06:53 | 00:06:54 | 00:06:52 | 00:06:59 | 00:06:53 | 00:07:02 | 00:06:57 | |
| 6 | | 00:25:00 | Casorse | 00:24:45 | 00:28:20 | 00:24:45 | 00:25:13 | 00:26:08 | 00:25:32 | 00:25:38 | 00:24:46 | 00:24:34 | 00:24:45 | 00:25:09 | |
| 7 | | 00:12:00 | Duemeghetti | 00:11:49 | 00:16:53 | 00:11:55 | 00:11:48 | 00:12:30 | 00:12:28 | 00:12:05 | 00:12:11 | 00:11:55 | 00:12:35 | 00:12:29 | |
| 8 | | 01:01:00 | Effenchelle | 01:02:17 | 01:11:05 | 01:02:08 | 01:03:46 | 00:59:54 | 01:03:30 | 01:02:47 | 01:01:01 | 01:00:35 | 01:02:46 | 01:03:22 | |
| 9 | | 00:31:00 | Fabrezzi | 00:30:54 | 00:42:28 | 00:31:43 | 00:32:04 | 00:31:57 | 00:32:06 | 00:31:41 | 00:32:21 | 00:30:32 | 00:31:26 | 00:30:54 | |
| 10 | | 00:08:00 | Ghazalli | 00:08:05 | 00:11:42 | 00:08:22 | 00:08:12 | 00:08:08 | 00:08:01 | 00:07:51 | 00:08:04 | 00:08:05 | 00:08:18 | 00:07:59 | |
| 11 | | 00:14:00 | Hebrondzi | 00:14:05 | 00:21:08 | 00:14:24 | 00:14:41 | 00:14:09 | 00:14:08 | 00:14:37 | 00:14:11 | 00:14:24 | 00:14:04 | 00:14:22 | |
| 12 | | 00:22:00 | Infiladde | 00:21:49 | 00:26:14 | 00:22:35 | 00:22:59 | 00:22:57 | 00:22:45 | 00:21:40 | 00:22:42 | 00:22:27 | 00:22:42 | 00:21:58 | |
| 13 | | 00:10:00 | Jalpezzi | 00:10:22 | 00:12:52 | 00:10:00 | 00:10:03 | 00:10:17 | 00:10:04 | 00:10:21 | 00:10:22 | 00:10:14 | 00:10:10 | 00:10:08 | |
| 14 | | 00:07:00 | Kentrassi | 00:07:01 | 00:08:45 | 00:07:20 | 00:06:52 | 00:07:01 | 00:07:04 | 00:06:58 | 00:07:18 | 00:07:00 | 00:07:06 | 00:07:06 | |
| 15 | | 00:12:00 | Limonazzi | 00:12:14 | 00:17:29 | 00:12:36 | 00:11:55 | 00:12:18 | 00:12:12 | 00:12:16 | 00:12:24 | 00:11:56 | 00:12:08 | 00:12:03 | |
| 16 | | 00:06:00 | Montrazzi | 00:05:57 | 00:07:50 | 00:06:00 | 00:06:00 | 00:06:00 | 00:06:00 | 00:06:00 | 00:06:00 | 00:06:00 | 00:06:00 | 00:06:00 | |
| 17 | | | | | | | | | | | | | | | |
| 18 | | | 3:50:00 | Total journey time | 3:52:07 | 4:56:45 | 3:52:07 | | | | | | | | |
| 19 | | | | Arrival time | 8:52:07 | 10:16:45 | 9:52:07 | | | | | | | | |
| 20 | | | % of stages where a bus was later than expected | 91.64% | | | | | | | | | | | |

| | | | |
|--------------|------------------------|--|--------|
| Formatting | All 3 headings | Consistent larger sans-serif font (than body text) | 1 mark |
| | | White text | 1 mark |
| | | Black background | 1 mark |
| Row 1 | Cells D1 to AW1 merged | ... left aligned | 1 mark |
| C3 | | Text wrapped as shown | 1 mark |
| Cells C3–C16 | | Centre aligned | 1 mark |
| Cells A4–A16 | | Merged | 1 mark |
| | | Vertically centre aligned | 1 mark |
| | | Horizontally centre aligned | 1 mark |
| | | Text wrapped as shown | 1 mark |
| | | Text rotated 90 degrees anti-clockwise | 1 mark |

Task 2 – Stage_ Journey Times

A Candidate, ZZ999, 9999

| | A | B | C | D | E | F | |
|----|--|-------------------|---|-------------------------------------|---------------------|---------------------|--------------|
| 1 | | | | Departure time | | | |
| 2 | | | | 0.208333333333333 | 0.222222222222222 | 0.236111111111111 | |
| 3 | | | Arrival time in | | | | |
| 4 | Expected time for this stage of the journey | 0.010416666666667 | Accramzi | 0.0107523148148148 | 0.0164467592592593 | 0.0103703703703704 | |
| 5 | | 0.004861111111111 | Banghazi | 0.00509259259259259 | 0.00576388888888889 | 0.00497685185185185 | |
| 6 | | 0.017361111111111 | Casporse | 0.0171875 | 0.0196759259259259 | 0.0171875 | |
| 7 | | 0.008333333333333 | Duemeghetti | 0.00820601851851852 | 0.011724537037037 | 0.00827546296296296 | |
| 8 | | 0.042361111111111 | Effenchelle | 0.0432523148148148 | 0.0493634259259259 | 0.0431481481481482 | |
| 9 | | 0.021527777777778 | Fabrezzi | 0.0214583333333333 | 0.0294907407407407 | 0.022025462962963 | |
| 10 | | 0.005555555555556 | Ghanzalli | 0.00561342592592593 | 0.008125 | 0.00581018518518519 | |
| 11 | | 0.009722222222222 | Hebrondzi | 0.00978009259259259 | 0.0146759259259259 | 0.01 | |
| 12 | | 0.015277777777778 | Infiladde | 0.015150462962963 | 0.0182175925925926 | 0.0156828703703704 | |
| 13 | | 0.006944444444444 | Jalpezzi | 0.00719907407407407 | 0.00893518518518519 | 0.006944444444444 | |
| 14 | | 0.004861111111111 | Kentrassi | 0.00487268518518519 | 0.00607638888888889 | 0.00509259259259259 | |
| 15 | | 0.008333333333333 | Limonazzi | 0.00849537037037037 | 0.0121412037037037 | 0.00875 | |
| 16 | | 0.004166666666667 | Montrazzi | 0.004131944444444 | 0.00543981481481481 | 0.00436342592592593 | |
| 17 | | | | | | | |
| 18 | | | =SUM(B4:B16) | Total journey time | =SUM(D4:D16) | =SUM(E4:E16) | =SUM(F4:F16) |
| 19 | | | | Arrival time | =D18+D2 | =E18+E2 | =F18+F2 |
| 20 | | | % of stages where a bus was later than expected | =SUM(Count!AX4:AX16)/COUNT(D4:AW16) | | | |

Stage_ZZ999_9999

- B18 =SUM(B4:B16) 1 mark
- C18 Appropriate label ... e.g.Total journey time 1 mark
- D18 =SUM(D4:D16) 1 mark
- C19 Appropriate label e.g.Arrival time 1 mark
- D19 =D2+D18 1 mark
- Both formulae replicated from D18/19 to AW18/19 1 mark
- C20 Appropriate label e.g. % of stages a bus was late 1 mark
- Rows 1–16 Appropriate formatting labels and times 1 mark
- D20 Appropriate formatting to the % cell 1 mark
- D20 =SUM(AX4:AX16)/COUNT (D4:AW16) 1 mark

A Candidate, ZZ999, 9999

| | G | H | I | J | K | L |
|----|---------------------|---------------------|---------------------|---------------------|---------------------|---------------------|
| 1 | | | | | | |
| 2 | 0.25 | 0.263888888888889 | 0.277777777777778 | 0.291666666666667 | 0.305555555555556 | 0.319444444444444 |
| 3 | | | | | | |
| 4 | 0.010347222222222 | 0.0109259259259259 | 0.010208333333333 | 0.010520833333333 | 0.0104976851851852 | 0.0106828703703704 |
| 5 | 0.004861111111111 | 0.00478009259259259 | 0.00479166666666667 | 0.00476851851851852 | 0.00484953703703704 | 0.00478009259259259 |
| 6 | 0.0175115740740741 | 0.0181481481481481 | 0.0177314814814815 | 0.0178009259259259 | 0.0171990740740741 | 0.0170601851851852 |
| 7 | 0.00819444444444445 | 0.00868055555555556 | 0.00865740740740741 | 0.0083912037037037 | 0.00846064814814815 | 0.00827546296296296 |
| 8 | 0.0442824074074074 | 0.041597222222222 | 0.044097222222222 | 0.043599537037037 | 0.0423726851851852 | 0.0420717592592593 |
| 9 | 0.0222685185185185 | 0.0221875 | 0.02229166666666667 | 0.0220023148148148 | 0.0224652777777778 | 0.0212037037037037 |
| 10 | 0.00569444444444444 | 0.00564814814814815 | 0.00556712962962963 | 0.00545138888888889 | 0.00560185185185185 | 0.00561342592592593 |
| 11 | 0.0101967592592593 | 0.00982638888888889 | 0.00981481481481481 | 0.010150462962963 | 0.00984953703703704 | 0.01 |
| 12 | 0.0159606481481482 | 0.0159375 | 0.0157986111111111 | 0.0150462962962963 | 0.01576388888888889 | 0.0155902777777778 |
| 13 | 0.00697916666666667 | 0.0071412037037037 | 0.00699074074074074 | 0.0071875 | 0.00719907407407407 | 0.00710648148148148 |
| 14 | 0.00476851851851852 | 0.00487268518518519 | 0.00490740740740741 | 0.00483796296296296 | 0.00506944444444444 | 0.00486111111111111 |
| 15 | 0.00827546296296296 | 0.00854166666666667 | 0.00847222222222222 | 0.00851851851851852 | 0.00861111111111111 | 0.00828703703703704 |
| 16 | 0.00436342592592593 | 0.00413194444444444 | 0.00423611111111111 | 0.00435185185185185 | 0.00435185185185185 | 0.00427083333333333 |
| 17 | | | | | | |
| 18 | =SUM(G4:G16) | =SUM(H4:H16) | =SUM(I4:I16) | =SUM(J4:J16) | =SUM(K4:K16) | =SUM(L4:L16) |
| 19 | =G18+G2 | =H18+H2 | =I18+I2 | =J18+J2 | =K18+K2 | =L18+L2 |
| 20 | | | | | | |

A Candidate, ZZ999, 9999

| | M | N | O | P | Q | R |
|----|---------------------|---------------------|---------------------|---------------------|---------------------|---------------------|
| 1 | | | | | | |
| 2 | 0.3333333333333333 | 0.3472222222222222 | 0.3611111111111111 | 0.375 | 0.388888888888889 | 0.402777777777778 |
| 3 | | | | | | |
| 4 | 0.0108101851851852 | 0.0106018518518519 | 0.0107986111111111 | 0.0107407407407407 | 0.0103935185185185 | 0.0107523148148148 |
| 5 | 0.00488425925925926 | 0.00482638888888889 | 0.00481481481481482 | 0.00493055555555556 | 0.00476851851851852 | 0.00508101851851852 |
| 6 | 0.0171875 | 0.0174652777777778 | 0.0172337962962963 | 0.0177199074074074 | 0.01739583333333333 | 0.0180787037037037 |
| 7 | 0.00873842592592593 | 0.00866898148148148 | 0.00866898148148148 | 0.00841435185185185 | 0.00818287037037037 | 0.00818287037037037 |
| 8 | 0.043587962962963 | 0.0440046296296296 | 0.0444212962962963 | 0.04177083333333333 | 0.0417476851851852 | 0.0423263888888889 |
| 9 | 0.0218287037037037 | 0.02145833333333333 | 0.0216203703703704 | 0.0225115740740741 | 0.0215277777777778 | 0.0219791666666667 |
| 10 | 0.00576388888888889 | 0.00554398148148148 | 0.00574074074074074 | 0.00570601851851852 | 0.00555555555555556 | 0.005625 |
| 11 | 0.00976851851851852 | 0.00997685185185185 | 0.00961805555555556 | 0.00976851851851852 | 0.00983796296296296 | 0.00987268518518519 |
| 12 | 0.01576388888888889 | 0.0152546296296296 | 0.0159490740740741 | 0.01565972222222222 | 0.0152314814814815 | 0.0150115740740741 |
| 13 | 0.00706018518518518 | 0.00703703703703704 | 0.00725694444444444 | 0.00701388888888889 | 0.00693287037037037 | 0.00695601851851852 |
| 14 | 0.00493055555555556 | 0.00493055555555556 | 0.0050462962962963 | 0.00494212962962963 | 0.00480324074074074 | 0.00498842592592593 |
| 15 | 0.00842592592592593 | 0.00836805555555556 | 0.00859953703703704 | 0.00834490740740741 | 0.00840277777777778 | 0.00827546296296296 |
| 16 | 0.00412037037037037 | 0.0041087962962963 | 0.00417824074074074 | 0.00429398148148148 | 0.00413194444444444 | 0.00436342592592593 |
| 17 | | | | | | |
| 18 | =SUM(M4:M16) | =SUM(N4:N16) | =SUM(O4:O16) | =SUM(P4:P16) | =SUM(Q4:Q16) | =SUM(R4:R16) |
| 19 | =M18+M2 | =N18+N2 | =O18+O2 | =P18+P2 | =Q18+Q2 | =R18+R2 |
| 20 | | | | | | |

A Candidate, ZZ999, 9999

| | S | T | U | V | W | X |
|----|---------------------|---------------------|---------------------|---------------------|---------------------|---------------------|
| 1 | | | | | | |
| 2 | 0.416666666666667 | 0.430555555555556 | 0.444444444444444 | 0.458333333333333 | 0.472222222222222 | 0.486111111111111 |
| 3 | | | | | | |
| 4 | 0.010763888888889 | 0.0124074074074074 | 0.0109490740740741 | 0.0123842592592593 | 0.010462962962963 | 0.0106481481481481 |
| 5 | 0.00476851851851852 | 0.00568287037037037 | 0.00625 | 0.00533564814814815 | 0.005 | 0.00487268518518519 |
| 6 | 0.0175 | 0.0181481481481481 | 0.0196759259259259 | 0.0217592592592593 | 0.0172916666666667 | 0.0175694444444444 |
| 7 | 0.00863425925925926 | 0.00873842592592593 | 0.01 | 0.0103819444444444 | 0.00854166666666667 | 0.00864583333333333 |
| 8 | 0.0427662037037037 | 0.045 | 0.0546527777777778 | 0.0473032407407407 | 0.0419907407407407 | 0.0444097222222222 |
| 9 | 0.0219097222222222 | 0.0247685185185185 | 0.0292013888888889 | 0.0263310185185185 | 0.021875 | 0.0211689814814815 |
| 10 | 0.0055787037037037 | 0.00636574074074074 | 0.00585648148148148 | 0.00606481481481481 | 0.0055555555555556 | 0.00570601851851852 |
| 11 | 0.0100578703703704 | 0.011087962962963 | 0.0112731481481481 | 0.0106597222222222 | 0.0101041666666667 | 0.00954861111111111 |
| 12 | 0.0153009259259259 | 0.0182175925925926 | 0.0173611111111111 | 0.0180902777777778 | 0.0160185185185185 | 0.0159375 |
| 13 | 0.00709490740740741 | 0.00784722222222222 | 0.0101388888888889 | 0.006875 | 0.00717592592592593 | 0.00717592592592593 |
| 14 | 0.00490740740740741 | 0.00476851851851852 | 0.006875 | 0.00524305555555556 | 0.00483796296296296 | 0.0050462962962963 |
| 15 | 0.00832175925925926 | 0.00873842592592593 | 0.00978009259259259 | 0.00947916666666667 | 0.00831018518518519 | 0.0083912037037037 |
| 16 | 0.00429398148148148 | 0.00413194444444444 | 0.00623842592592593 | 0.00513888888888889 | 0.00425925925925926 | 0.00421296296296296 |
| 17 | | | | | | |
| 18 | =SUM(S4:S16) | =SUM(T4:T16) | =SUM(U4:U16) | =SUM(V4:V16) | =SUM(W4:W16) | =SUM(X4:X16) |
| 19 | =S18+S2 | =T18+T2 | =U18+U2 | =V18+V2 | =W18+W2 | =X18+X2 |
| 20 | | | | | | |

A Candidate, ZZ999, 9999

| | Y | Z | AA | AB | AC | AD |
|----|---------------------|---------------------|---------------------|---------------------|---------------------|---------------------|
| 1 | | | | | | |
| 2 | 0.5 | 0.513888888888889 | 0.527777777777778 | 0.541666666666667 | 0.555555555555556 | 0.569444444444444 |
| 3 | | | | | | |
| 4 | 0.010462962962963 | 0.0105324074074074 | 0.010555555555556 | 0.010659722222222 | 0.010625 | 0.010555555555556 |
| 5 | 0.004965277777778 | 0.00480324074074074 | 0.004965277777778 | 0.004791666666667 | 0.00494212962962963 | 0.00480324074074074 |
| 6 | 0.0180324074074074 | 0.0177546296296296 | 0.017152777777778 | 0.017465277777778 | 0.018055555555556 | 0.0177893518518519 |
| 7 | 0.00864583333333333 | 0.00829861111111111 | 0.00855324074074074 | 0.00850694444444444 | 0.00827546296296296 | 0.008402777777778 |
| 8 | 0.0420023148148148 | 0.042118055555556 | 0.0419675925925926 | 0.042430555555556 | 0.0423032407407407 | 0.0443634259259259 |
| 9 | 0.0219328703703704 | 0.0222685185185185 | 0.0225115740740741 | 0.022118055555556 | 0.0211921296296296 | 0.0223032407407407 |
| 10 | 0.00550925925925926 | 0.00577546296296296 | 0.00568287037037037 | 0.005590277777778 | 0.00569444444444444 | 0.00583333333333333 |
| 11 | 0.009791666666667 | 0.0100115740740741 | 0.009791666666667 | 0.010162037037037 | 0.00994212962962963 | 0.0100462962962963 |
| 12 | 0.0159606481481482 | 0.015462962962963 | 0.0159259259259259 | 0.0158333333333333 | 0.0154398148148148 | 0.0149884259259259 |
| 13 | 0.00702546296296296 | 0.00693287037037037 | 0.00686342592592593 | 0.00693287037037037 | 0.00724537037037037 | 0.00688657407407407 |
| 14 | 0.00497685185185185 | 0.00503472222222222 | 0.00505787037037037 | 0.00498842592592593 | 0.00491898148148148 | 0.00502314814814815 |
| 15 | 0.00856481481481482 | 0.00856481481481482 | 0.008229166666667 | 0.0081712962962963 | 0.0081712962962963 | 0.00836805555555556 |
| 16 | 0.00425925925925926 | 0.00408564814814815 | 0.00428240740740741 | 0.00435185185185185 | 0.00412037037037037 | 0.00425925925925926 |
| 17 | | | | | | |
| 18 | =SUM(Y4:Y16) | =SUM(Z4:Z16) | =SUM(AA4:AA16) | =SUM(AB4:AB16) | =SUM(AC4:AC16) | =SUM(AD4:AD16) |
| 19 | =Y18+Y2 | =Z18+Z2 | =AA18+AA2 | =AB18+AB2 | =AC18+AC2 | =AD18+AD2 |
| 20 | | | | | | |

A Candidate, ZZ999, 9999

| | AE | AF | AG | AH | AI | AJ |
|----|----------------------|---------------------|---------------------|----------------------|---------------------|---------------------|
| 1 | | | | | | |
| 2 | 0.5833333333333333 | 0.5972222222222222 | 0.6111111111111111 | 0.625 | 0.638888888888889 | 0.652777777777778 |
| 3 | | | | | | |
| 4 | 0.0110416666666667 | 0.0107986111111111 | 0.0102314814814815 | 0.0105324074074074 | 0.0106944444444444 | 0.0137962962962963 |
| 5 | 0.00516203703703704 | 0.005 | 0.005 | 0.00502314814814815 | 0.00496527777777778 | 0.00496527777777778 |
| 6 | 0.0173726851851852 | 0.01708333333333333 | 0.0175925925925926 | 0.0174537037037037 | 0.017650462962963 | 0.0262037037037037 |
| 7 | 0.0087962962962963 | 0.00851851851851852 | 0.00831018518518519 | 0.00854166666666667 | 0.00871527777777778 | 0.0116087962962963 |
| 8 | 0.04899305555555556 | 0.0422685185185185 | 0.0422337962962963 | 0.0443402777777778 | 0.0425115740740741 | 0.0575462962962963 |
| 9 | 0.0244328703703704 | 0.021099537037037 | 0.0211689814814815 | 0.0214930555555556 | 0.0212962962962963 | 0.0231712962962963 |
| 10 | 0.00576388888888889 | 0.00548611111111111 | 0.00578703703703704 | 0.00578703703703704 | 0.005625 | 0.00611111111111111 |
| 11 | 0.012337962962963 | 0.0101388888888889 | 0.00966435185185185 | 0.00965277777777778 | 0.00960648148148148 | 0.00990740740740741 |
| 12 | 0.0148148148148148 | 0.0158217592592593 | 0.0157291666666667 | 0.0158101851851852 | 0.015625 | 0.0191203703703704 |
| 13 | 0.0068287037037037 | 0.00696759259259259 | 0.00711805555555556 | 0.00686342592592593 | 0.00707175925925926 | 0.00917824074074074 |
| 14 | 0.006145833333333333 | 0.00497685185185185 | 0.00506944444444444 | 0.004895833333333333 | 0.00506944444444444 | 0.0075 |
| 15 | 0.0106712962962963 | 0.00868055555555556 | 0.0087037037037037 | 0.00863425925925926 | 0.00853009259259259 | 0.0115046296296296 |
| 16 | 0.00446759259259259 | 0.00429398148148148 | 0.00417824074074074 | 0.00409722222222222 | 0.00435185185185185 | 0.004375 |
| 17 | | | | | | |
| 18 | =SUM(AE4:AE16) | =SUM(AF4:AF16) | =SUM(AG4:AG16) | =SUM(AH4:AH16) | =SUM(AI4:AI16) | =SUM(AJ4:AJ16) |
| 19 | =AE18+AE2 | =AF18+AF2 | =AG18+AG2 | =AH18+AH2 | =AI18+AI2 | =AJ18+AJ2 |
| 20 | | | | | | |

A Candidate, ZZ999, 9999

| | AK | AL | AM | AN | AO | AP |
|----|---------------------|---------------------|---------------------|---------------------|---------------------|---------------------|
| 1 | | | | | | |
| 2 | 0.666666666666667 | 0.680555555555555 | 0.694444444444445 | 0.708333333333333 | 0.722222222222222 | 0.736111111111111 |
| 3 | | | | | | |
| 4 | 0.0108796296296296 | 0.010416666666667 | 0.010451388888889 | 0.0106018518518519 | 0.0127546296296296 | 0.0103935185185185 |
| 5 | 0.00505787037037037 | 0.00478009259259259 | 0.00509259259259259 | 0.0050462962962963 | 0.00561342592592593 | 0.00497685185185185 |
| 6 | 0.017349537037037 | 0.0173148148148148 | 0.017916666666667 | 0.0180324074074074 | 0.0197222222222222 | 0.0171296296296296 |
| 7 | 0.00836805555555556 | 0.00824074074074074 | 0.00853009259259259 | 0.00849537037037037 | 0.00863425925925926 | 0.00825231481481481 |
| 8 | 0.0426736111111111 | 0.0431018518518519 | 0.0428703703703704 | 0.0419675925925926 | 0.0458564814814815 | 0.0428819444444444 |
| 9 | 0.0212847222222222 | 0.0213541666666667 | 0.0223611111111111 | 0.0214583333333333 | 0.0240740740740741 | 0.0211805555555556 |
| 10 | 0.00565972222222222 | 0.00575231481481481 | 0.00548611111111111 | 0.00570601851851852 | 0.00699074074074074 | 0.00570601851851852 |
| 11 | 0.00988425925925926 | 0.0100115740740741 | 0.0101851851851852 | 0.010150462962963 | 0.0101041666666667 | 0.00989583333333333 |
| 12 | 0.0150925925925926 | 0.015775462962963 | 0.0153009259259259 | 0.0153356481481481 | 0.0169560185185185 | 0.0154166666666667 |
| 13 | 0.00688657407407407 | 0.00719907407407407 | 0.00700231481481482 | 0.00709490740740741 | 0.00873842592592593 | 0.00703703703703704 |
| 14 | 0.00483796296296296 | 0.00498842592592593 | 0.00476851851851852 | 0.00508101851851852 | 0.00553240740740741 | 0.00476851851851852 |
| 15 | 0.0087037037037037 | 0.00844907407407407 | 0.00853009259259259 | 0.00840277777777778 | 0.00815972222222222 | 0.0083912037037037 |
| 16 | 0.00417824074074074 | 0.00412037037037037 | 0.00421296296296296 | 0.00422453703703704 | 0.00452546296296296 | 0.00421296296296296 |
| 17 | | | | | | |
| 18 | =SUM(AK4:AK16) | =SUM(AL4:AL16) | =SUM(AM4:AM16) | =SUM(AN4:AN16) | =SUM(AO4:AO16) | =SUM(AP4:AP16) |
| 19 | =AK18+AK2 | =AL18+AL2 | =AM18+AM2 | =AN18+AN2 | =AO18+AO2 | =AP18+AP2 |
| 20 | | | | | | |

A Candidate, ZZ999, 9999

| | AQ | AR | AS | AT | AU | AV |
|----|---------------------|---------------------|---------------------|---------------------|---------------------|---------------------|
| 1 | | | | | | |
| 2 | 0.75 | 0.763888888888889 | 0.777777777777778 | 0.791666666666667 | 0.805555555555555 | 0.819444444444445 |
| 3 | | | | | | |
| 4 | 0.0103009259259259 | 0.0107407407407407 | 0.0105092592592593 | 0.0105902777777778 | 0.0108217592592593 | 0.014849537037037 |
| 5 | 0.00483796296296296 | 0.00497685185185185 | 0.00478009259259259 | 0.00505787037037037 | 0.00484953703703704 | 0.00599537037037037 |
| 6 | 0.0178009259259259 | 0.01774305555555556 | 0.0179050925925926 | 0.0180902777777778 | 0.0176851851851852 | 0.0265277777777778 |
| 7 | 0.00861111111111111 | 0.00836805555555556 | 0.00831018518518519 | 0.00819444444444445 | 0.00850694444444444 | 0.0109606481481481 |
| 8 | 0.0437037037037037 | 0.0416087962962963 | 0.0438657407407407 | 0.0439814814814815 | 0.0422222222222222 | 0.0496990740740741 |
| 9 | 0.0225810185185185 | 0.0220138888888889 | 0.0211342592592593 | 0.0217708333333333 | 0.0221527777777778 | 0.0310416666666667 |
| 10 | 0.00572916666666667 | 0.00550925925925926 | 0.00546296296296296 | 0.00545138888888889 | 0.00546296296296296 | 0.00715277777777778 |
| 11 | 0.00966435185185185 | 0.00983796296296296 | 0.00969907407407407 | 0.01010416666666667 | 0.01006944444444444 | 0.01517361111111111 |
| 12 | 0.0153935185185185 | 0.0159375 | 0.0155324074074074 | 0.0150115740740741 | 0.0150925925925926 | 0.0220138888888889 |
| 13 | 0.00728009259259259 | 0.00688657407407407 | 0.00709490740740741 | 0.0071412037037037 | 0.00729166666666667 | 0.00813657407407407 |
| 14 | 0.00484953703703704 | 0.00505787037037037 | 0.00501157407407407 | 0.00487268518518519 | 0.00503472222222222 | 0.00631944444444444 |
| 15 | 0.00822916666666667 | 0.00872685185185185 | 0.00864583333333333 | 0.00853009259259259 | 0.00841435185185185 | 0.0103240740740741 |
| 16 | 0.00409722222222222 | 0.00431712962962963 | 0.00436342592592593 | 0.00413194444444444 | 0.0043287037037037 | 0.00423611111111111 |
| 17 | | | | | | |
| 18 | =SUM(AQ4:AQ16) | =SUM(AR4:AR16) | =SUM(AS4:AS16) | =SUM(AT4:AT16) | =SUM(AU4:AU16) | =SUM(AV4:AV16) |
| 19 | =AQ18+AQ2 | =AR18+AR2 | =AS18+AS2 | =AT18+AT2 | =AU18+AU2 | =AV18+AV2 |
| 20 | | | | | | |

A Candidate, ZZ999, 9999

| | AW | AX |
|----|---------------------|--------------------------------|
| 1 | | |
| 2 | 0.8333333333333333 | |
| 3 | | Number of times a bus was late |
| 4 | 0.0103472222222222 | =Calc!AX4 |
| 5 | 0.0049652777777778 | =Calc!AX5 |
| 6 | 0.0175694444444444 | =Calc!AX6 |
| 7 | 0.00862268518518518 | =Calc!AX7 |
| 8 | 0.0438773148148148 | =Calc!AX8 |
| 9 | 0.0216898148148148 | =Calc!AX9 |
| 10 | 0.00560185185185185 | =Calc!AX10 |
| 11 | 0.00956018518518519 | =Calc!AX11 |
| 12 | 0.0156944444444444 | =Calc!AX12 |
| 13 | 0.0072569444444444 | =Calc!AX13 |
| 14 | 0.005 | =Calc!AX14 |
| 15 | 0.00827546296296296 | =Calc!AX15 |
| 16 | 0.00412037037037037 | =Calc!AX16 |
| 17 | | |
| 18 | =SUM(AW4:AW16) | |
| 19 | =AW18+AW2 | |
| 20 | | |

AX4 Separate sheet or part of sheet used 1 mark

| | A | B | C | |
|----|--|---|------------------------|--|
| 1 | | | | |
| 2 | | | | |
| 3 | | | Arrival time in | |
| 4 | Expected time for this stage of the journey | =[NEWStage_ZZ999_9999.xlsx]Stage_IB4 | Accramzi | |
| 5 | | =B4+[NEWStage_ZZ999_9999.xlsx]Stage_IB5 | Banghazi | |
| 6 | | =B5+[NEWStage_ZZ999_9999.xlsx]Stage_IB6 | Casporse | |
| 7 | | =B6+[NEWStage_ZZ999_9999.xlsx]Stage_IB7 | Duemeghetti | |
| 8 | | =B7+[NEWStage_ZZ999_9999.xlsx]Stage_IB8 | Effenchelle | |
| 9 | | =B8+[NEWStage_ZZ999_9999.xlsx]Stage_IB9 | Fabrezzi | |
| 10 | | =B9+[NEWStage_ZZ999_9999.xlsx]Stage_IB10 | Ch... | |
| 11 | | =B10+[NEWStage_ZZ999_9999.xlsx]Stage_IB11 | Hebrondzi | |
| 12 | | =B11+[NEWStage_ZZ999_9999.xlsx]Stage_IB12 | Infiladde | |
| 13 | | =B12+[NEWStage_ZZ999_9999.xlsx]Stage_IB13 | Jalpezzi | |
| 14 | | =B13+[NEWStage_ZZ999_9999.xlsx]Stage_IB14 | Kentrassi | |
| 15 | | =B14+[NEWStage_ZZ999_9999.xlsx]Stage_IB15 | Limonazzi | |
| 16 | | =B15+[NEWStage_ZZ999_9999.xlsx]Stage_IB16 | Montrazzi | |
| 17 | | | | |

Cumulative expected totals (may be in column B) 1 mark

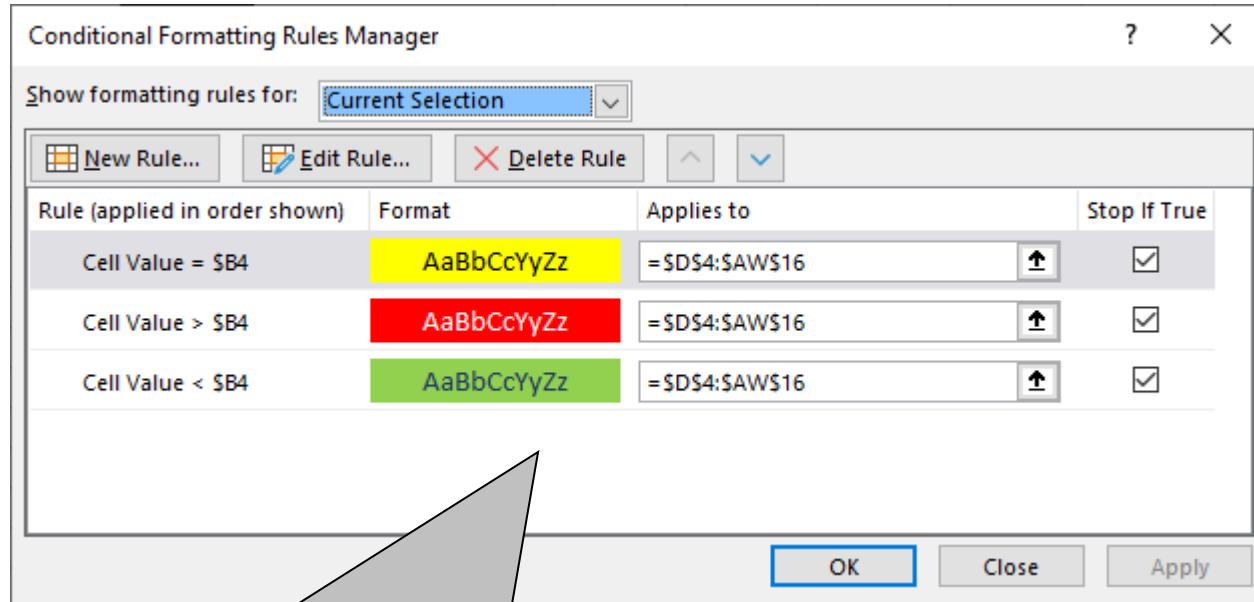
| | D | E |
|----|---|---|
| 1 | Departure time | |
| 2 | 0.208333333333333 | =D2+"00:20:00" |
| 3 | | |
| 4 | =[NEWStage_ZZ999_9999.xlsx]Stage_ID4 | =[NEWStage_ZZ999_9999.xlsx]Stage_IE4 |
| 5 | =D4+[NEWStage_ZZ999_9999.xlsx]Stage_ID5 | =E4+[NEWStage_ZZ999_9999.xlsx]Stage_IE5 |
| 6 | =D5+[NEWStage_ZZ999_9999.xlsx]Stage_ID6 | =E5+[NEWStage_ZZ999_9999.xlsx]Stage_IE6 |
| 7 | =D6+[NEWStage_ZZ999_9999.xlsx]Stage_ID7 | =E6+[NEWStage_ZZ999_9999.xlsx]Stage_IE7 |
| 8 | =D7+[NEWStage_ZZ999_9999.xlsx]Stage_ID8 | =E7+[NEWStage_ZZ999_9999.xlsx]Stage_IE8 |
| 9 | =D8+[NEWStage_ZZ999_9999.xlsx]Stage_ID9 | =E8+[NEWStage_ZZ999_9999.xlsx]Stage_IE9 |
| 10 | =D9+[NEWStage_ZZ999_9999.xlsx]Stage_ID10 | =E9+[NEWStage_ZZ999_9999.xlsx]Stage_IE10 |
| 11 | =D10+[NEWStage_ZZ999_9999.xlsx]Stage_ID11 | =E10+[NEWStage_ZZ999_9999.xlsx]Stage_IE11 |
| 12 | =D11+[NEWStage_ZZ999_9999.xlsx]Stage_ID12 | =E11+[NEWStage_ZZ999_9999.xlsx]Stage_IE12 |
| 13 | =D12+[NEWStage_ZZ999_9999.xlsx]Stage_ID13 | =E12+[NEWStage_ZZ999_9999.xlsx]Stage_IE13 |
| 14 | =D13+[NEWStage_ZZ999_9999.xlsx]Stage_ID14 | =E13+[NEWStage_ZZ999_9999.xlsx]Stage_IE14 |
| 15 | =D14+[NEWStage_ZZ999_9999.xlsx]Stage_ID15 | =E14+[NEWStage_ZZ999_9999.xlsx]Stage_IE15 |
| 16 | =D15+[NEWStage_ZZ999_9999.xlsx]Stage_ID16 | =E15+[NEWStage_ZZ999_9999.xlsx]Stage_IE16 |

Row 5 Reference to row 4 1 mark
 Time for stage added to cumulative 1 mark

PUBLISHED

| | AW | AX |
|----|---|--------------------------------|
| 1 | | |
| 2 | =AV2+"00:20:00" | |
| 3 | | Number of times a bus was late |
| 4 | =[NEWStage_ZZ999_9999.xlsx]Stage !AW4 | =COUNTIF(D4:AW4,">"& B4) |
| 5 | =AW4+[NEWStage_ZZ999_9999.xlsx]Stage !AW5 | =COUNTIF(D5:AW5,">"& B5) |
| 6 | =AW5+[NEWStage_ZZ999_9999.xlsx]Stage !AW6 | =COUNTIF(D6:AW6,">"& B6) |
| 7 | =AW6+[NEWStage_ZZ999_9999.xlsx]Stage !AW7 | =COUNTIF(D7:AW7,">"& B7) |
| 8 | =AW7+[NEWStage_ZZ999_9999.xlsx]Stage !AW8 | =COUNTIF(D8:AW8,">"& B8) |
| 9 | =AW8+[NEWStage_ZZ999_9999.xlsx]Stage !AW9 | =COUNTIF(D9:AW9,">"& B9) |
| 10 | =AW9+[NEWStage_ZZ999_9999.xlsx]Stage !AW10 | =COUNTIF(D10:AW10,">"& B10) |
| 11 | =AW10+[NEWStage_ZZ999_9999.xlsx]Stage !AW11 | =COUNTIF(D11:AW11,">"& B11) |
| 12 | =AW11+[NEWStage_ZZ999_9999.xlsx]Stage !AW12 | =COUNTIF(D12:AW12,">"& B12) |
| 13 | =AW12+[NEWStage_ZZ999_9999.xlsx]Stage !AW13 | =COUNTIF(D13:AW13,">"& B13) |
| 14 | =AW13+[NEWStage_ZZ999_9999.xlsx]Stage !AW14 | =COUNTIF(D14:AW14,">"& B14) |
| 15 | =AW14+[NEWStage_ZZ999_9999.xlsx]Stage !AW15 | =COUNTIF(D15:AW15,">"& B15) |
| 16 | =AW15+[NEWStage_ZZ999_9999.xlsx]Stage !AW16 | =COUNTIF(D16:AW16,">"& B16) |

AX4 =COUNTIF(D4:AW4,">"& B4) 1 mark
 D4:AW4 1 mark
 ">"& B4) 1 mark
 Replicated AX4 to AX16 1 mark
 AX3 Appropriate label in AX3 e.g. Number of times a bus was late 1 mark



| | | |
|------------------------|---|--------|
| Conditional formatting | Cell range D4 to AW16 only conditional formatting | 1 mark |
| | Cell value =B4 ... | 1 mark |
| | ... absolute referencing applied to B only | 1 mark |
| | ... yellow background | 1 mark |
| | ... black text | 1 mark |
| | Cell value >\$B4 | 1 mark |
| | ... red background | 1 mark |
| | ... white text | 1 mark |
| | Cell value <\$B4 | 1 mark |
| | ... light green background | 1 mark |
| | ... dark blue text | 1 mark |

A Candidate, ZZ999, 9999

| | A | B | C | D | E | F | G | H | I | J | K | L |
|----|--|-----------|---|-----------------------|----------|----------|----------|----------|----------|----------|----------|----------|
| 1 | | | | Departure time | | | | | | | | |
| 2 | | | | 05:00:00 | 05:20:00 | 05:40:00 | 06:00:00 | 06:20:00 | 06:40:00 | 07:00:00 | 07:20:00 | 07:40:00 |
| 3 | | | Arrival time in | | | | | | | | | |
| 4 | Expected time for this stage of the journey | 00:15:00 | Accramzi | 00:15:29 | 00:23:41 | 00:14:56 | 00:14:54 | 00:15:44 | 00:14:42 | 00:15:09 | 00:15:07 | 00:15:23 |
| 5 | | 00:07:00 | Banghazi | 00:07:20 | 00:08:18 | 00:07:10 | 00:07:00 | 00:06:53 | 00:06:54 | 00:06:52 | 00:06:59 | 00:06:53 |
| 6 | | 00:25:00 | Casorse | 00:24:45 | 00:28:20 | 00:24:45 | 00:25:13 | 00:26:08 | 00:25:32 | 00:25:38 | 00:24:46 | 00:24:34 |
| 7 | | 00:12:00 | Duemeghetti | 00:11:49 | 00:16:53 | 00:11:55 | 00:11:48 | 00:12:30 | 00:12:28 | 00:12:05 | 00:12:11 | 00:11:55 |
| 8 | | 01:01:00 | Effenchelle | 01:02:17 | 01:11:05 | 01:02:08 | 01:03:46 | 00:59:54 | 01:03:30 | 01:02:47 | 01:01:01 | 01:00:35 |
| 9 | | 00:31:00 | Fabrezi | 00:30:54 | 00:42:28 | 00:31:43 | 00:32:04 | 00:31:57 | 00:32:06 | 00:31:41 | 00:32:21 | 00:30:32 |
| 10 | | 00:08:00 | Ghanzalli | 00:08:05 | 00:11:42 | 00:08:22 | 00:08:12 | 00:08:08 | 00:08:01 | 00:07:51 | 00:08:04 | 00:08:05 |
| 11 | | 00:14:00 | Hebrondzi | 00:14:05 | 00:21:08 | 00:14:24 | 00:14:41 | 00:14:09 | 00:14:08 | 00:14:37 | 00:14:11 | 00:14:24 |
| 12 | | 00:22:00 | Infiladde | 00:21:49 | 00:26:14 | 00:22:35 | 00:22:59 | 00:22:57 | 00:22:45 | 00:21:40 | 00:22:42 | 00:22:27 |
| 13 | | 00:10:00 | Jalpezzi | 00:10:22 | 00:12:52 | 00:10:00 | 00:10:03 | 00:10:17 | 00:10:04 | 00:10:21 | 00:10:22 | 00:10:14 |
| 14 | 00:07:00 | Kentrassi | 00:07:01 | 00:08:45 | 00:07:20 | 00:06:52 | 00:07:01 | 00:07:04 | 00:06:58 | 00:07:18 | 00:07:00 | |
| 15 | 00:12:00 | Limonazzi | 00:12:14 | 00:17:29 | 00:12:36 | 00:11:55 | 00:12:18 | 00:12:12 | 00:12:16 | 00:12:24 | 00:11:56 | |
| 16 | 00:06:00 | Montrazzi | 00:05:57 | 00:07:50 | 00:06:17 | 00:06:17 | 00:05:57 | 00:06:06 | 00:06:16 | 00:06:16 | 00:06:09 | |
| 17 | | | | | | | | | | | | |
| 18 | | 3:50:00 | Total journey time | 3:52:07 | 4:56:45 | 3:54:11 | 3:55:44 | 3:53:53 | 3:55:32 | 3:54:11 | 3:53:42 | 3:50:07 |
| 19 | | | Arrival time | 8:52:07 | 10:16:45 | 9:34:11 | 9:55:44 | 10:13:53 | 10:35:32 | 10:54:11 | 11:13:42 | 11:30:07 |
| 20 | | | % of stages where a bus was later than expected | 91.64% | | | | | | | | |

A Candidate, ZZ999, 9999

| | M | N | O | P | Q | R | S | T | U | V | W | X |
|----|----------|----------|----------|----------|----------|----------|----------|----------|----------|----------|----------|----------|
| 1 | | | | | | | | | | | | |
| 2 | 08:00:00 | 08:20:00 | 08:40:00 | 09:00:00 | 09:20:00 | 09:40:00 | 10:00:00 | 10:20:00 | 10:40:00 | 11:00:00 | 11:20:00 | 11:40:00 |
| 3 | | | | | | | | | | | | |
| 4 | 00:15:34 | 00:15:16 | 00:15:33 | 00:15:28 | 00:14:58 | 00:15:29 | 00:15:30 | 00:17:52 | 00:15:46 | 00:17:50 | 00:15:04 | 00:15:20 |
| 5 | 00:07:02 | 00:06:57 | 00:06:56 | 00:07:06 | 00:06:52 | 00:07:19 | 00:06:52 | 00:08:11 | 00:09:00 | 00:07:41 | 00:07:12 | 00:07:01 |
| 6 | 00:24:45 | 00:25:09 | 00:24:49 | 00:25:31 | 00:25:03 | 00:26:02 | 00:25:12 | 00:26:08 | 00:28:20 | 00:31:20 | 00:24:54 | 00:25:18 |
| 7 | 00:12:35 | 00:12:29 | 00:12:29 | 00:12:07 | 00:11:47 | 00:11:47 | 00:12:26 | 00:12:35 | 00:14:24 | 00:14:57 | 00:12:18 | 00:12:27 |
| 8 | 01:02:46 | 01:03:22 | 01:03:58 | 01:00:09 | 01:00:07 | 01:00:57 | 01:01:35 | 01:04:48 | 01:18:42 | 01:08:07 | 01:00:28 | 01:03:57 |
| 9 | 00:31:26 | 00:30:54 | 00:31:08 | 00:32:25 | 00:31:00 | 00:31:39 | 00:31:33 | 00:35:40 | 00:42:03 | 00:37:55 | 00:31:30 | 00:30:29 |
| 10 | 00:08:18 | 00:07:59 | 00:08:16 | 00:08:13 | 00:08:00 | 00:08:06 | 00:08:02 | 00:09:10 | 00:08:26 | 00:08:44 | 00:08:00 | 00:08:13 |
| 11 | 00:14:04 | 00:14:22 | 00:13:51 | 00:14:04 | 00:14:10 | 00:14:13 | 00:14:29 | 00:15:58 | 00:16:14 | 00:15:21 | 00:14:33 | 00:13:45 |
| 12 | 00:22:42 | 00:21:58 | 00:22:58 | 00:22:33 | 00:21:56 | 00:21:37 | 00:22:02 | 00:26:14 | 00:25:00 | 00:26:03 | 00:23:04 | 00:22:57 |
| 13 | 00:10:10 | 00:10:08 | 00:10:27 | 00:10:06 | 00:09:59 | 00:10:01 | 00:10:13 | 00:11:18 | 00:14:36 | 00:09:54 | 00:10:20 | 00:10:20 |
| 14 | 00:07:06 | 00:07:06 | 00:07:16 | 00:07:07 | 00:06:55 | 00:07:11 | 00:07:04 | 00:06:52 | 00:09:54 | 00:07:33 | 00:06:58 | 00:07:16 |
| 15 | 00:12:08 | 00:12:03 | 00:12:23 | 00:12:01 | 00:12:06 | 00:11:55 | 00:11:59 | 00:12:35 | 00:14:05 | 00:13:39 | 00:11:58 | 00:12:05 |
| 16 | 00:05:56 | 00:05:55 | 00:06:01 | 00:06:11 | 00:05:57 | 00:06:17 | 00:06:11 | 00:05:57 | 00:08:59 | 00:07:24 | 00:06:08 | 00:06:04 |
| 17 | | | | | | | | | | | | |
| 18 | 3:54:32 | 3:53:38 | 3:56:05 | 3:53:01 | 3:48:50 | 3:52:33 | 3:53:08 | 4:13:18 | 4:45:29 | 4:26:28 | 3:52:27 | 3:55:12 |
| 19 | 11:54:32 | 12:13:38 | 12:36:05 | 12:53:01 | 13:08:50 | 13:32:33 | 13:53:08 | 14:33:18 | 15:25:29 | 15:26:28 | 15:12:27 | 15:35:12 |
| 20 | | | | | | | | | | | | |

A Candidate, ZZ999, 9999

| | Y | Z | AA | AB | AC | AD | AE | AF | AG | AH | AI | AJ |
|----|----------|----------|----------|----------|----------|----------|----------|----------|----------|----------|----------|----------|
| 1 | | | | | | | | | | | | |
| 2 | 12:00:00 | 12:20:00 | 12:40:00 | 13:00:00 | 13:20:00 | 13:40:00 | 14:00:00 | 14:20:00 | 14:40:00 | 15:00:00 | 15:20:00 | 15:40:00 |
| 3 | | | | | | | | | | | | |
| 4 | 00:15:04 | 00:15:10 | 00:15:12 | 00:15:21 | 00:15:18 | 00:15:12 | 00:15:54 | 00:15:33 | 00:14:44 | 00:15:10 | 00:15:24 | 00:19:52 |
| 5 | 00:07:09 | 00:06:55 | 00:07:09 | 00:06:54 | 00:07:07 | 00:06:55 | 00:07:26 | 00:07:12 | 00:07:12 | 00:07:14 | 00:07:09 | 00:07:09 |
| 6 | 00:25:58 | 00:25:34 | 00:24:42 | 00:25:09 | 00:26:00 | 00:25:37 | 00:25:01 | 00:24:36 | 00:25:20 | 00:25:08 | 00:25:25 | 00:37:44 |
| 7 | 00:12:27 | 00:11:57 | 00:12:19 | 00:12:15 | 00:11:55 | 00:12:06 | 00:12:40 | 00:12:16 | 00:11:58 | 00:12:18 | 00:12:33 | 00:16:43 |
| 8 | 01:00:29 | 01:00:39 | 01:00:26 | 01:01:06 | 01:00:55 | 01:03:53 | 01:10:33 | 01:00:52 | 01:00:49 | 01:03:51 | 01:01:13 | 01:22:52 |
| 9 | 00:31:35 | 00:32:04 | 00:32:25 | 00:31:51 | 00:30:31 | 00:32:07 | 00:35:11 | 00:30:23 | 00:30:29 | 00:30:57 | 00:30:40 | 00:33:22 |
| 10 | 00:07:56 | 00:08:19 | 00:08:11 | 00:08:03 | 00:08:12 | 00:08:24 | 00:08:18 | 00:07:54 | 00:08:20 | 00:08:20 | 00:08:06 | 00:08:48 |
| 11 | 00:14:06 | 00:14:25 | 00:14:06 | 00:14:38 | 00:14:19 | 00:14:28 | 00:17:46 | 00:14:36 | 00:13:55 | 00:13:54 | 00:13:50 | 00:14:16 |
| 12 | 00:22:59 | 00:22:16 | 00:22:56 | 00:22:48 | 00:22:14 | 00:21:35 | 00:21:20 | 00:22:47 | 00:22:39 | 00:22:46 | 00:22:30 | 00:27:32 |
| 13 | 00:10:07 | 00:09:59 | 00:09:53 | 00:09:59 | 00:10:26 | 00:09:55 | 00:09:50 | 00:10:02 | 00:10:15 | 00:09:53 | 00:10:11 | 00:13:13 |
| 14 | 00:07:10 | 00:07:15 | 00:07:17 | 00:07:11 | 00:07:05 | 00:07:14 | 00:08:51 | 00:07:10 | 00:07:18 | 00:07:03 | 00:07:18 | 00:10:48 |
| 15 | 00:12:20 | 00:12:20 | 00:11:51 | 00:11:46 | 00:11:46 | 00:12:03 | 00:15:22 | 00:12:30 | 00:12:32 | 00:12:26 | 00:12:17 | 00:16:34 |
| 16 | 00:06:08 | 00:05:53 | 00:06:10 | 00:06:16 | 00:05:56 | 00:06:08 | 00:06:26 | 00:06:11 | 00:06:01 | 00:05:54 | 00:06:16 | 00:06:18 |
| 17 | | | | | | | | | | | | |
| 18 | 3:53:28 | 3:52:46 | 3:52:37 | 3:53:17 | 3:51:44 | 3:55:37 | 4:14:38 | 3:52:02 | 3:51:32 | 3:54:54 | 3:52:52 | 4:55:11 |
| 19 | 15:53:28 | 16:12:46 | 16:32:37 | 16:53:17 | 17:11:44 | 17:35:37 | 18:14:38 | 18:12:02 | 18:31:32 | 18:54:54 | 19:12:52 | 20:35:11 |
| 20 | | | | | | | | | | | | |

A Candidate, ZZ999, 9999

| | AK | AL | AM | AN | AO | AP | AQ | AR | AS | AT | AU | AV |
|----|----------|----------|----------|----------|----------|----------|----------|----------|----------|----------|----------|----------|
| 1 | | | | | | | | | | | | |
| 2 | 16:00:00 | 16:20:00 | 16:40:00 | 17:00:00 | 17:20:00 | 17:40:00 | 18:00:00 | 18:20:00 | 18:40:00 | 19:00:00 | 19:20:00 | 19:40:00 |
| 3 | | | | | | | | | | | | |
| 4 | 00:15:40 | 00:15:00 | 00:15:03 | 00:15:16 | 00:18:22 | 00:14:58 | 00:14:50 | 00:15:28 | 00:15:08 | 00:15:15 | 00:15:35 | 00:21:23 |
| 5 | 00:07:17 | 00:06:53 | 00:07:20 | 00:07:16 | 00:08:05 | 00:07:10 | 00:06:58 | 00:07:10 | 00:06:53 | 00:07:17 | 00:06:59 | 00:08:38 |
| 6 | 00:24:59 | 00:24:56 | 00:25:48 | 00:25:58 | 00:28:24 | 00:24:40 | 00:25:38 | 00:25:33 | 00:25:47 | 00:26:03 | 00:25:28 | 00:38:12 |
| 7 | 00:12:03 | 00:11:52 | 00:12:17 | 00:12:14 | 00:12:26 | 00:11:53 | 00:12:24 | 00:12:03 | 00:11:58 | 00:11:48 | 00:12:15 | 00:15:47 |
| 8 | 01:01:27 | 01:02:04 | 01:01:44 | 01:00:26 | 01:06:02 | 01:01:45 | 01:02:56 | 00:59:55 | 01:03:10 | 01:03:20 | 01:00:48 | 01:11:34 |
| 9 | 00:30:39 | 00:30:45 | 00:32:12 | 00:30:54 | 00:34:40 | 00:30:30 | 00:32:31 | 00:31:42 | 00:30:26 | 00:31:21 | 00:31:54 | 00:44:42 |
| 10 | 00:08:09 | 00:08:17 | 00:07:54 | 00:08:13 | 00:10:04 | 00:08:13 | 00:08:15 | 00:07:56 | 00:07:52 | 00:07:51 | 00:07:52 | 00:10:18 |
| 11 | 00:14:14 | 00:14:25 | 00:14:40 | 00:14:37 | 00:14:33 | 00:14:15 | 00:13:55 | 00:14:10 | 00:13:58 | 00:14:33 | 00:14:30 | 00:21:51 |
| 12 | 00:21:44 | 00:22:43 | 00:22:02 | 00:22:05 | 00:24:25 | 00:22:12 | 00:22:10 | 00:22:57 | 00:22:22 | 00:21:37 | 00:21:44 | 00:31:42 |
| 13 | 00:09:55 | 00:10:22 | 00:10:05 | 00:10:13 | 00:12:35 | 00:10:08 | 00:10:29 | 00:09:55 | 00:10:13 | 00:10:17 | 00:10:30 | 00:11:43 |
| 14 | 00:06:58 | 00:07:11 | 00:06:52 | 00:07:19 | 00:07:58 | 00:06:52 | 00:06:59 | 00:07:17 | 00:07:13 | 00:07:01 | 00:07:15 | 00:09:06 |
| 15 | 00:12:32 | 00:12:10 | 00:12:17 | 00:12:06 | 00:11:45 | 00:12:05 | 00:11:51 | 00:12:34 | 00:12:27 | 00:12:17 | 00:12:07 | 00:14:52 |
| 16 | 00:06:01 | 00:05:56 | 00:06:04 | 00:06:05 | 00:06:31 | 00:06:04 | 00:05:54 | 00:06:13 | 00:06:17 | 00:05:57 | 00:06:14 | 00:06:06 |
| 17 | | | | | | | | | | | | |
| 18 | 3:51:38 | 3:52:34 | 3:54:18 | 3:52:42 | 4:15:50 | 3:50:45 | 3:54:50 | 3:52:53 | 3:53:44 | 3:54:37 | 3:53:11 | 5:05:54 |
| 19 | 19:51:38 | 20:12:34 | 20:34:18 | 20:52:42 | 21:35:50 | 21:30:45 | 21:54:50 | 22:12:53 | 22:33:44 | 22:54:37 | 23:13:11 | 24:45:54 |
| 20 | | | | | | | | | | | | |

A Candidate, ZZ999, 9999

| | AW | AX |
|----|----------|-----------------------------------|
| 1 | | |
| 2 | 20:00:00 | |
| 3 | | Number of times a bus was late |
| 4 | 00:14:54 | 37 |
| 5 | 00:07:09 | 40 |
| 6 | 00:25:18 | 40 |
| 7 | 00:12:25 | 40 |
| 8 | 01:03:11 | 42 |
| 9 | 00:31:14 | 41 |
| 10 | 00:08:04 | 42 |
| 11 | 00:13:46 | 43 |
| 12 | 00:22:36 | 44 |
| 13 | 00:10:27 | 45 |
| 14 | 00:07:12 | 45 |
| 15 | 00:11:55 | 44 |
| 16 | 00:05:56 | 45 |
| 17 | | |
| 18 | 3:54:07 | |
| 19 | 23:54:07 | |
| 20 | | |

Task 3 and 4 – Arrive_ Spreadsheet

A Candidate, ZZ999, 9999

| | A | B | C | D | E | F | G | H | I | J | K | L | M |
|----|--|----------|------------------------|-----------------------|----------|----------|----------|----------|----------|----------|----------|----------|----------|
| 1 | | | | Departure time | | | | | | | | | |
| 2 | | | | 05:00:00 | 05:20:00 | 05:40:00 | 06:00:00 | 06:20:00 | 06:40:00 | 07:00:00 | 07:20:00 | 07:40:00 | 08:00:00 |
| 3 | | | Arrival time in | | | | | | | | | | |
| 4 | Expected length of journey to this town | 00:15:00 | Accramzi | 05:15:29 | 05:43:41 | 05:54:56 | 06:14:54 | 06:35:44 | 06:54:42 | 07:15:09 | 07:35:07 | 07:55:23 | 08:15:34 |
| 5 | | 00:22:00 | Banghazi | 05:22:49 | 05:51:59 | 06:02:06 | 06:21:54 | 06:42:37 | 07:01:36 | 07:22:01 | 07:42:06 | 08:02:16 | 08:22:36 |
| 6 | | 00:47:00 | Casorse | 05:47:34 | 06:20:19 | 06:26:51 | 06:47:08 | 07:08:45 | 07:27:08 | 07:47:39 | 08:06:51 | 08:26:50 | 08:47:21 |
| 7 | | 00:59:00 | Duemeghetti | 05:59:23 | 06:37:12 | 06:38:46 | 06:58:56 | 07:21:15 | 07:39:36 | 07:59:44 | 08:19:02 | 08:38:45 | 08:59:56 |
| 8 | | 02:00:00 | Effenchelle | 07:01:40 | 07:48:17 | 07:40:54 | 08:02:41 | 08:21:09 | 08:43:06 | 09:02:31 | 09:20:03 | 09:39:20 | 10:02:42 |
| 9 | | 02:31:00 | Fabrezzi | 07:32:33 | 08:30:46 | 08:12:37 | 08:34:46 | 08:53:06 | 09:15:12 | 09:34:11 | 09:52:24 | 10:09:52 | 10:34:08 |
| 10 | | 02:39:00 | Ghazalli | 07:40:38 | 08:42:27 | 08:20:58 | 08:42:58 | 09:01:14 | 09:23:13 | 09:42:02 | 10:00:29 | 10:17:57 | 10:42:26 |
| 11 | | 02:53:00 | Hebrondzi | 07:54:44 | 09:03:35 | 08:35:22 | 08:57:39 | 09:15:23 | 09:37:21 | 09:56:40 | 10:14:40 | 10:32:21 | 10:56:30 |
| 12 | | 03:15:00 | Infiladde | 08:16:33 | 09:29:50 | 08:57:57 | 09:20:38 | 09:38:20 | 10:00:05 | 10:18:20 | 10:37:21 | 10:54:48 | 11:19:12 |
| 13 | | 03:25:00 | Jalpezzi | 08:26:54 | 09:42:41 | 09:07:57 | 09:30:42 | 09:48:37 | 10:10:09 | 10:28:41 | 10:47:43 | 11:05:02 | 11:29:22 |
| 14 | | 03:32:00 | Kentrassi | 08:33:56 | 09:51:26 | 09:15:17 | 09:37:33 | 09:55:38 | 10:17:13 | 10:35:39 | 10:55:02 | 11:12:02 | 11:36:27 |
| 15 | | 03:44:00 | Limonazzi | 08:46:10 | 10:08:55 | 09:27:53 | 09:49:28 | 10:07:56 | 10:29:25 | 10:47:55 | 11:07:26 | 11:23:58 | 11:48:35 |
| 16 | | 03:50:00 | Montrazzi | 08:52:07 | 10:16:45 | 09:34:10 | 09:55:45 | 10:13:53 | 10:35:32 | 10:54:11 | 11:13:42 | 11:30:07 | 11:54:31 |

| | | | |
|--------------------|-------------------|---|--------|
| Arrive Spreadsheet | Arrive_ZZ999_9999 | Spreadsheet duplicated and saved as Arrive_ZZ999_9999 as a second sheet in the workbook | 1 mark |
| | | Black background changed to blue | 1 mark |
| | | Rows 18–20 deleted | 1 mark |
| | | Cells A4:A16 | 1 mark |
| | | Text changed to: Expected length of journey to this town | 1 mark |

A Candidate, ZZ999, 9999

| | N | O | P | Q | R | S | T | U | V | W | X | Y | Z |
|----|----------|----------|----------|----------|----------|----------|----------|----------|----------|----------|----------|----------|----------|
| 1 | | | | | | | | | | | | | |
| 2 | 08:20:00 | 08:40:00 | 09:00:00 | 09:20:00 | 09:40:00 | 10:00:00 | 10:20:00 | 10:40:00 | 11:00:00 | 11:20:00 | 11:40:00 | 12:00:00 | 12:20:00 |
| 3 | | | | | | | | | | | | | |
| 4 | 08:35:16 | 08:55:33 | 09:15:28 | 09:34:58 | 09:55:29 | 10:15:30 | 10:37:52 | 10:55:46 | 11:17:50 | 11:35:04 | 11:55:20 | 12:15:04 | 12:35:10 |
| 5 | 08:42:13 | 09:02:29 | 09:22:34 | 09:41:50 | 10:02:48 | 10:22:23 | 10:46:03 | 11:04:46 | 11:25:30 | 11:42:16 | 12:02:21 | 12:22:13 | 12:42:05 |
| 6 | 09:07:21 | 09:27:18 | 09:48:06 | 10:06:53 | 10:28:50 | 10:47:34 | 11:12:11 | 11:33:07 | 11:56:50 | 12:07:10 | 12:27:39 | 12:48:11 | 13:07:38 |
| 7 | 09:19:50 | 09:39:46 | 10:00:12 | 10:18:40 | 10:40:36 | 11:00:01 | 11:24:46 | 11:47:30 | 12:11:47 | 12:19:28 | 12:40:06 | 13:00:38 | 13:19:36 |
| 8 | 10:23:12 | 10:43:44 | 11:00:21 | 11:18:48 | 11:41:34 | 12:01:36 | 12:29:34 | 13:06:12 | 13:19:54 | 13:19:56 | 13:44:03 | 14:01:07 | 14:20:15 |
| 9 | 10:54:06 | 11:14:52 | 11:32:47 | 11:49:48 | 12:13:13 | 12:33:09 | 13:05:14 | 13:48:16 | 13:57:49 | 13:51:27 | 14:14:32 | 14:32:42 | 14:52:18 |
| 10 | 11:02:06 | 11:23:08 | 11:40:59 | 11:57:48 | 12:21:19 | 12:41:10 | 13:14:24 | 13:56:42 | 14:06:33 | 13:59:27 | 14:22:45 | 14:40:38 | 15:00:38 |
| 11 | 11:16:27 | 11:36:59 | 11:55:03 | 12:11:58 | 12:35:32 | 12:55:39 | 13:30:23 | 14:12:55 | 14:21:55 | 14:14:00 | 14:36:29 | 14:54:44 | 15:15:02 |
| 12 | 11:38:25 | 11:59:57 | 12:17:36 | 12:33:54 | 12:57:09 | 13:17:42 | 13:56:37 | 14:37:55 | 14:47:58 | 14:37:03 | 14:59:27 | 15:17:43 | 15:37:18 |
| 13 | 11:48:34 | 12:10:24 | 12:27:42 | 12:43:52 | 13:07:10 | 13:27:55 | 14:07:56 | 14:52:32 | 14:57:51 | 14:47:24 | 15:09:46 | 15:27:51 | 15:47:16 |
| 14 | 11:55:39 | 12:17:40 | 12:34:49 | 12:50:47 | 13:14:21 | 13:34:59 | 14:14:47 | 15:02:26 | 15:05:25 | 14:54:22 | 15:17:02 | 15:35:01 | 15:54:31 |
| 15 | 12:07:42 | 12:30:03 | 12:46:51 | 13:02:53 | 13:26:16 | 13:46:58 | 14:27:22 | 15:16:31 | 15:19:04 | 15:06:20 | 15:29:07 | 15:47:21 | 16:06:52 |
| 16 | 12:13:38 | 12:36:04 | 12:53:01 | 13:08:50 | 13:32:34 | 13:53:09 | 14:33:19 | 15:25:30 | 15:26:28 | 15:12:28 | 15:35:12 | 15:53:29 | 16:12:45 |

PUBLISHED

A Candidate, ZZ999, 9999

| | AA | AB | AC | AD | AE | AF | AG | AH | AI | AJ | AK | AL | AM |
|----|----------|----------|----------|----------|----------|----------|----------|----------|----------|----------|----------|----------|----------|
| 1 | | | | | | | | | | | | | |
| 2 | 12:40:00 | 13:00:00 | 13:20:00 | 13:40:00 | 14:00:00 | 14:20:00 | 14:40:00 | 15:00:00 | 15:20:00 | 15:40:00 | 16:00:00 | 16:20:00 | 16:40:00 |
| 3 | | | | | | | | | | | | | |
| 4 | 12:55:12 | 13:15:21 | 13:35:18 | 13:55:12 | 14:15:54 | 14:35:33 | 14:54:44 | 15:15:10 | 15:35:24 | 15:59:52 | 16:15:40 | 16:35:00 | 16:55:03 |
| 5 | 13:02:21 | 13:22:15 | 13:42:24 | 14:02:07 | 14:23:20 | 14:42:45 | 15:01:56 | 15:22:24 | 15:42:32 | 16:07:01 | 16:22:57 | 16:41:53 | 17:02:23 |
| 6 | 13:27:03 | 13:47:23 | 14:08:24 | 14:27:44 | 14:48:21 | 15:07:22 | 15:27:15 | 15:47:32 | 16:07:57 | 16:44:45 | 16:47:56 | 17:06:48 | 17:28:11 |
| 7 | 13:39:22 | 13:59:38 | 14:20:19 | 14:39:50 | 15:01:02 | 15:19:37 | 15:39:13 | 15:59:50 | 16:20:30 | 17:01:29 | 16:59:59 | 17:18:41 | 17:40:28 |
| 8 | 14:39:48 | 15:00:44 | 15:21:14 | 15:43:43 | 16:11:35 | 16:20:30 | 16:40:02 | 17:03:41 | 17:21:43 | 18:24:21 | 18:01:25 | 18:20:45 | 18:42:11 |
| 9 | 15:12:13 | 15:32:34 | 15:51:45 | 16:15:50 | 16:46:46 | 16:50:53 | 17:10:31 | 17:34:38 | 17:52:23 | 18:57:43 | 18:32:05 | 18:51:30 | 19:14:23 |
| 10 | 15:20:24 | 15:40:38 | 15:59:58 | 16:24:13 | 16:55:04 | 16:58:47 | 17:18:51 | 17:42:59 | 18:00:30 | 19:06:32 | 18:40:14 | 18:59:48 | 19:22:17 |
| 11 | 15:34:30 | 15:55:15 | 16:14:16 | 16:38:41 | 17:12:50 | 17:13:24 | 17:32:46 | 17:56:53 | 18:14:19 | 19:20:48 | 18:54:28 | 19:14:12 | 19:36:57 |
| 12 | 15:57:26 | 16:18:04 | 16:36:30 | 17:00:16 | 17:34:10 | 17:36:10 | 17:55:25 | 18:19:39 | 18:36:49 | 19:48:20 | 19:16:11 | 19:36:56 | 19:58:59 |
| 13 | 16:07:19 | 16:28:02 | 16:46:56 | 17:10:11 | 17:44:00 | 17:46:12 | 18:05:39 | 18:29:32 | 18:46:59 | 20:01:33 | 19:26:07 | 19:47:18 | 20:09:04 |
| 14 | 16:14:36 | 16:35:13 | 16:54:02 | 17:17:25 | 17:52:51 | 17:53:22 | 18:12:58 | 18:36:35 | 18:54:17 | 20:12:21 | 19:33:05 | 19:54:29 | 20:15:57 |
| 15 | 16:26:27 | 16:46:59 | 17:05:47 | 17:29:28 | 18:08:14 | 18:05:53 | 18:25:30 | 18:49:01 | 19:06:35 | 20:28:55 | 19:45:38 | 20:06:39 | 20:28:13 |
| 16 | 16:32:38 | 16:53:14 | 17:11:44 | 17:35:36 | 18:14:40 | 18:12:04 | 18:31:31 | 18:54:56 | 19:12:51 | 20:35:13 | 19:51:39 | 20:12:35 | 20:34:17 |

A Candidate, ZZ999, 9999

| | AN | AO | AP | AQ | AR | AS | AT | AU | AV | AW | AX |
|----|----------|----------|----------|----------|----------|----------|----------|----------|----------|----------|--------------------------------|
| 1 | | | | | | | | | | | |
| 2 | 17:00:00 | 17:20:00 | 17:40:00 | 18:00:00 | 18:20:00 | 18:40:00 | 19:00:00 | 19:20:00 | 19:40:00 | 20:00:00 | |
| 3 | | | | | | | | | | | Number of times a bus was late |
| 4 | 17:15:16 | 17:38:22 | 17:54:58 | 18:14:50 | 18:35:28 | 18:55:08 | 19:15:15 | 19:35:35 | 20:01:23 | 20:14:54 | 46 |
| 5 | 17:22:32 | 17:46:26 | 18:02:09 | 18:21:48 | 18:42:38 | 19:02:01 | 19:22:32 | 19:42:34 | 20:10:01 | 20:22:02 | 46 |
| 6 | 17:48:30 | 18:14:51 | 18:26:49 | 18:47:26 | 19:08:10 | 19:27:48 | 19:48:35 | 20:08:02 | 20:48:14 | 20:47:20 | 46 |
| 7 | 18:00:44 | 18:27:17 | 18:38:42 | 18:59:51 | 19:20:13 | 19:39:46 | 20:00:23 | 20:20:17 | 21:04:01 | 20:59:46 | 46 |
| 8 | 19:01:10 | 19:33:19 | 19:40:27 | 20:02:47 | 20:20:08 | 20:42:55 | 21:03:43 | 21:21:05 | 22:15:34 | 22:02:57 | 46 |
| 9 | 19:32:04 | 20:07:59 | 20:10:57 | 20:35:18 | 20:51:50 | 21:13:22 | 21:35:04 | 21:52:59 | 23:00:17 | 22:34:11 | 46 |
| 10 | 19:40:17 | 20:18:04 | 20:19:09 | 20:43:33 | 20:59:46 | 21:21:14 | 21:42:56 | 22:00:51 | 23:10:35 | 22:42:15 | 46 |
| 11 | 19:54:54 | 20:32:37 | 20:33:24 | 20:57:27 | 21:13:56 | 21:35:13 | 21:57:28 | 22:15:22 | 23:32:26 | 22:56:00 | 46 |
| 12 | 20:16:59 | 20:57:01 | 20:55:36 | 21:19:38 | 21:36:53 | 21:57:35 | 22:19:05 | 22:37:06 | 00:04:08 | 23:18:36 | 46 |
| 13 | 20:27:11 | 21:09:37 | 21:05:44 | 21:30:06 | 21:46:48 | 22:07:48 | 22:29:22 | 22:47:36 | 00:15:51 | 23:29:03 | 46 |
| 14 | 20:34:30 | 21:17:35 | 21:12:36 | 21:37:06 | 21:54:05 | 22:15:01 | 22:36:23 | 22:54:51 | 00:24:58 | 23:36:15 | 46 |
| 15 | 20:46:35 | 21:29:20 | 21:24:41 | 21:48:57 | 22:06:39 | 22:27:28 | 22:48:40 | 23:06:58 | 00:39:50 | 23:48:10 | 46 |
| 16 | 20:52:40 | 21:35:51 | 21:30:45 | 21:54:51 | 22:12:53 | 22:33:45 | 22:54:36 | 23:13:12 | 00:45:56 | 23:54:07 | 46 |

A Candidate, ZZ999, 9999

| | A | B | C | D | E | F |
|----|--|-----------------|------------------------|------------------------------------|------------------------------------|------------------------------------|
| 1 | | | | Departure time | | |
| 2 | | | | 0.208333333333333 | 0.222222222222222 | 0.236111111111111 |
| 3 | 0 | | Arrival time in | | | |
| 4 | Expected length of journey to this town | =B3+Stage_IB4 | Accramzi | =SUM(Stage_ID\$3:D4,Arrive_ID\$2) | =SUM(Stage_IE\$3:E4,Arrive_IE\$2) | =SUM(Stage_IF\$3:F4,Arrive_IF\$2) |
| 5 | | =B4+Stage_IB5 | Banghazi | =SUM(Stage_ID\$3:D5,Arrive_ID\$2) | =SUM(Stage_IE\$3:E5,Arrive_IE\$2) | =SUM(Stage_IF\$3:F5,Arrive_IF\$2) |
| 6 | | =B5+Stage_IB6 | Casporse | =SUM(Stage_ID\$3:D6,Arrive_ID\$2) | =SUM(Stage_IE\$3:E6,Arrive_IE\$2) | =SUM(Stage_IF\$3:F6,Arrive_IF\$2) |
| 7 | | =B6+Stage_IB7 | Duemeghetti | =SUM(Stage_ID\$3:D7,Arrive_ID\$2) | =SUM(Stage_IE\$3:E7,Arrive_IE\$2) | =SUM(Stage_IF\$3:F7,Arrive_IF\$2) |
| 8 | | =B7+Stage_IB8 | Effenchelle | =SUM(Stage_ID\$3:D8,Arrive_ID\$2) | =SUM(Stage_IE\$3:E8,Arrive_IE\$2) | =SUM(Stage_IF\$3:F8,Arrive_IF\$2) |
| 9 | | =B8+Stage_IB9 | Fabrezzi | =SUM(Stage_ID\$3:D9,Arrive_ID\$2) | =SUM(Stage_IE\$3:E9,Arrive_IE\$2) | =SUM(Stage_IF\$3:F9,Arrive_IF\$2) |
| 10 | | =B9+Stage_IB10 | Ghanzalli | =SUM(Stage_ID\$3:D10,Arrive_ID\$2) | =SUM(Stage_IE\$3:E10,Arrive_IE\$2) | =SUM(Stage_IF\$3:F10,Arrive_IF\$2) |
| 11 | | =B10+Stage_IB11 | Hebrondzi | =SUM(Stage_ID\$3:D11,Arrive_ID\$2) | =SUM(Stage_IE\$3:E11,Arrive_IE\$2) | =SUM(Stage_IF\$3:F11,Arrive_IF\$2) |
| 12 | | =B11+Stage_IB12 | Infiladde | =SUM(Stage_ID\$3:D12,Arrive_ID\$2) | =SUM(Stage_IE\$3:E12,Arrive_IE\$2) | =SUM(Stage_IF\$3:F12,Arrive_IF\$2) |
| 13 | | =B12+Stage_IB13 | Jalpezzi | =SUM(Stage_ID\$3:D13,Arrive_ID\$2) | =SUM(Stage_IE\$3:E13,Arrive_IE\$2) | =SUM(Stage_IF\$3:F13,Arrive_IF\$2) |
| 14 | | =B13+Stage_IB14 | Kentrassi | =SUM(Stage_ID\$3:D14,Arrive_ID\$2) | =SUM(Stage_IE\$3:E14,Arrive_IE\$2) | =SUM(Stage_IF\$3:F14,Arrive_IF\$2) |
| 15 | | =B14+Stage_IB15 | Limonazzi | =SUM(Stage_ID\$3:D15,Arrive_ID\$2) | =SUM(Stage_IE\$3:E15,Arrive_IE\$2) | =SUM(Stage_IF\$3:F15,Arrive_IF\$2) |
| 16 | | =B15+Stage_IB16 | Montrazzi | =SUM(Stage_ID\$3:D16,Arrive_ID\$2) | =SUM(Stage_IE\$3:E16,Arrive_IE\$2) | =SUM(Stage_IF\$3:F16,Arrive_IF\$2) |

| | | | | |
|--------------------|-----------------------|-------------------------------|--------------------|--------|
| Arrive Spreadsheet | Cell B4 | =B3 | relative reference | 1 mark |
| | | +Stage_! | | 1 mark |
| | | B4 | relative reference | 1 mark |
| | | Replicated B4 to B16 | | 1 mark |
| Cell D4 | =SUM(...) | | 1 mark | |
| | Stage_! | | 1 mark | |
| | D\$3 | absolute & relative reference | 1 mark | |
| | :D4 | relative reference | 1 mark | |
| | ,Arrive_! | +Arrive_! | 1 mark | |
| | D\$2 | absolute & relative reference | 1 mark | |
| | Replicated D4 to AW16 | | 1 mark | |

A Candidate, ZZ999, 9999

| | G | H | I | J |
|----|------------------------------------|------------------------------------|------------------------------------|------------------------------------|
| 1 | | | | |
| 2 | 0.25 | 0.263888888888889 | 0.277777777777778 | 0.291666666666667 |
| 3 | | | | |
| 4 | =SUM(Stage_!G\$3:G4,Arrive_!G\$2) | =SUM(Stage_!H\$3:H4,Arrive_!H\$2) | =SUM(Stage_!I\$3:I4,Arrive_!I\$2) | =SUM(Stage_!J\$3:J4,Arrive_!J\$2) |
| 5 | =SUM(Stage_!G\$3:G5,Arrive_!G\$2) | =SUM(Stage_!H\$3:H5,Arrive_!H\$2) | =SUM(Stage_!I\$3:I5,Arrive_!I\$2) | =SUM(Stage_!J\$3:J5,Arrive_!J\$2) |
| 6 | =SUM(Stage_!G\$3:G6,Arrive_!G\$2) | =SUM(Stage_!H\$3:H6,Arrive_!H\$2) | =SUM(Stage_!I\$3:I6,Arrive_!I\$2) | =SUM(Stage_!J\$3:J6,Arrive_!J\$2) |
| 7 | =SUM(Stage_!G\$3:G7,Arrive_!G\$2) | =SUM(Stage_!H\$3:H7,Arrive_!H\$2) | =SUM(Stage_!I\$3:I7,Arrive_!I\$2) | =SUM(Stage_!J\$3:J7,Arrive_!J\$2) |
| 8 | =SUM(Stage_!G\$3:G8,Arrive_!G\$2) | =SUM(Stage_!H\$3:H8,Arrive_!H\$2) | =SUM(Stage_!I\$3:I8,Arrive_!I\$2) | =SUM(Stage_!J\$3:J8,Arrive_!J\$2) |
| 9 | =SUM(Stage_!G\$3:G9,Arrive_!G\$2) | =SUM(Stage_!H\$3:H9,Arrive_!H\$2) | =SUM(Stage_!I\$3:I9,Arrive_!I\$2) | =SUM(Stage_!J\$3:J9,Arrive_!J\$2) |
| 10 | =SUM(Stage_!G\$3:G10,Arrive_!G\$2) | =SUM(Stage_!H\$3:H10,Arrive_!H\$2) | =SUM(Stage_!I\$3:I10,Arrive_!I\$2) | =SUM(Stage_!J\$3:J10,Arrive_!J\$2) |
| 11 | =SUM(Stage_!G\$3:G11,Arrive_!G\$2) | =SUM(Stage_!H\$3:H11,Arrive_!H\$2) | =SUM(Stage_!I\$3:I11,Arrive_!I\$2) | =SUM(Stage_!J\$3:J11,Arrive_!J\$2) |
| 12 | =SUM(Stage_!G\$3:G12,Arrive_!G\$2) | =SUM(Stage_!H\$3:H12,Arrive_!H\$2) | =SUM(Stage_!I\$3:I12,Arrive_!I\$2) | =SUM(Stage_!J\$3:J12,Arrive_!J\$2) |
| 13 | =SUM(Stage_!G\$3:G13,Arrive_!G\$2) | =SUM(Stage_!H\$3:H13,Arrive_!H\$2) | =SUM(Stage_!I\$3:I13,Arrive_!I\$2) | =SUM(Stage_!J\$3:J13,Arrive_!J\$2) |
| 14 | =SUM(Stage_!G\$3:G14,Arrive_!G\$2) | =SUM(Stage_!H\$3:H14,Arrive_!H\$2) | =SUM(Stage_!I\$3:I14,Arrive_!I\$2) | =SUM(Stage_!J\$3:J14,Arrive_!J\$2) |
| 15 | =SUM(Stage_!G\$3:G15,Arrive_!G\$2) | =SUM(Stage_!H\$3:H15,Arrive_!H\$2) | =SUM(Stage_!I\$3:I15,Arrive_!I\$2) | =SUM(Stage_!J\$3:J15,Arrive_!J\$2) |
| 16 | =SUM(Stage_!G\$3:G16,Arrive_!G\$2) | =SUM(Stage_!H\$3:H16,Arrive_!H\$2) | =SUM(Stage_!I\$3:I16,Arrive_!I\$2) | =SUM(Stage_!J\$3:J16,Arrive_!J\$2) |

A Candidate, ZZ999, 9999

| | K | L | M | N |
|----|------------------------------------|------------------------------------|------------------------------------|------------------------------------|
| 1 | | | | |
| 2 | 0.305555555555556 | 0.319444444444444 | 0.333333333333333 | 0.347222222222222 |
| 3 | | | | |
| 4 | =SUM(Stage_!K\$3:K4,Arrive_!K\$2) | =SUM(Stage_!L\$3:L4,Arrive_!L\$2) | =SUM(Stage_!M\$3:M4,Arrive_!M\$2) | =SUM(Stage_!N\$3:N4,Arrive_!N\$2) |
| 5 | =SUM(Stage_!K\$3:K5,Arrive_!K\$2) | =SUM(Stage_!L\$3:L5,Arrive_!L\$2) | =SUM(Stage_!M\$3:M5,Arrive_!M\$2) | =SUM(Stage_!N\$3:N5,Arrive_!N\$2) |
| 6 | =SUM(Stage_!K\$3:K6,Arrive_!K\$2) | =SUM(Stage_!L\$3:L6,Arrive_!L\$2) | =SUM(Stage_!M\$3:M6,Arrive_!M\$2) | =SUM(Stage_!N\$3:N6,Arrive_!N\$2) |
| 7 | =SUM(Stage_!K\$3:K7,Arrive_!K\$2) | =SUM(Stage_!L\$3:L7,Arrive_!L\$2) | =SUM(Stage_!M\$3:M7,Arrive_!M\$2) | =SUM(Stage_!N\$3:N7,Arrive_!N\$2) |
| 8 | =SUM(Stage_!K\$3:K8,Arrive_!K\$2) | =SUM(Stage_!L\$3:L8,Arrive_!L\$2) | =SUM(Stage_!M\$3:M8,Arrive_!M\$2) | =SUM(Stage_!N\$3:N8,Arrive_!N\$2) |
| 9 | =SUM(Stage_!K\$3:K9,Arrive_!K\$2) | =SUM(Stage_!L\$3:L9,Arrive_!L\$2) | =SUM(Stage_!M\$3:M9,Arrive_!M\$2) | =SUM(Stage_!N\$3:N9,Arrive_!N\$2) |
| 10 | =SUM(Stage_!K\$3:K10,Arrive_!K\$2) | =SUM(Stage_!L\$3:L10,Arrive_!L\$2) | =SUM(Stage_!M\$3:M10,Arrive_!M\$2) | =SUM(Stage_!N\$3:N10,Arrive_!N\$2) |
| 11 | =SUM(Stage_!K\$3:K11,Arrive_!K\$2) | =SUM(Stage_!L\$3:L11,Arrive_!L\$2) | =SUM(Stage_!M\$3:M11,Arrive_!M\$2) | =SUM(Stage_!N\$3:N11,Arrive_!N\$2) |
| 12 | =SUM(Stage_!K\$3:K12,Arrive_!K\$2) | =SUM(Stage_!L\$3:L12,Arrive_!L\$2) | =SUM(Stage_!M\$3:M12,Arrive_!M\$2) | =SUM(Stage_!N\$3:N12,Arrive_!N\$2) |
| 13 | =SUM(Stage_!K\$3:K13,Arrive_!K\$2) | =SUM(Stage_!L\$3:L13,Arrive_!L\$2) | =SUM(Stage_!M\$3:M13,Arrive_!M\$2) | =SUM(Stage_!N\$3:N13,Arrive_!N\$2) |
| 14 | =SUM(Stage_!K\$3:K14,Arrive_!K\$2) | =SUM(Stage_!L\$3:L14,Arrive_!L\$2) | =SUM(Stage_!M\$3:M14,Arrive_!M\$2) | =SUM(Stage_!N\$3:N14,Arrive_!N\$2) |
| 15 | =SUM(Stage_!K\$3:K15,Arrive_!K\$2) | =SUM(Stage_!L\$3:L15,Arrive_!L\$2) | =SUM(Stage_!M\$3:M15,Arrive_!M\$2) | =SUM(Stage_!N\$3:N15,Arrive_!N\$2) |
| 16 | =SUM(Stage_!K\$3:K16,Arrive_!K\$2) | =SUM(Stage_!L\$3:L16,Arrive_!L\$2) | =SUM(Stage_!M\$3:M16,Arrive_!M\$2) | =SUM(Stage_!N\$3:N16,Arrive_!N\$2) |

A Candidate, Z2999, 9999

| | O | P | Q | R |
|----|------------------------------------|------------------------------------|------------------------------------|------------------------------------|
| 1 | | | | |
| 2 | 0.361111111111111 | 0.375 | 0.388888888888889 | 0.402777777777778 |
| 3 | | | | |
| 4 | =SUM(Stage !O\$3:O4,Arrive !O\$2) | =SUM(Stage !P\$3:P4,Arrive !P\$2) | =SUM(Stage !Q\$3:Q4,Arrive !Q\$2) | =SUM(Stage !R\$3:R4,Arrive !R\$2) |
| 5 | =SUM(Stage !O\$3:O5,Arrive !O\$2) | =SUM(Stage !P\$3:P5,Arrive !P\$2) | =SUM(Stage !Q\$3:Q5,Arrive !Q\$2) | =SUM(Stage !R\$3:R5,Arrive !R\$2) |
| 6 | =SUM(Stage !O\$3:O6,Arrive !O\$2) | =SUM(Stage !P\$3:P6,Arrive !P\$2) | =SUM(Stage !Q\$3:Q6,Arrive !Q\$2) | =SUM(Stage !R\$3:R6,Arrive !R\$2) |
| 7 | =SUM(Stage !O\$3:O7,Arrive !O\$2) | =SUM(Stage !P\$3:P7,Arrive !P\$2) | =SUM(Stage !Q\$3:Q7,Arrive !Q\$2) | =SUM(Stage !R\$3:R7,Arrive !R\$2) |
| 8 | =SUM(Stage !O\$3:O8,Arrive !O\$2) | =SUM(Stage !P\$3:P8,Arrive !P\$2) | =SUM(Stage !Q\$3:Q8,Arrive !Q\$2) | =SUM(Stage !R\$3:R8,Arrive !R\$2) |
| 9 | =SUM(Stage !O\$3:O9,Arrive !O\$2) | =SUM(Stage !P\$3:P9,Arrive !P\$2) | =SUM(Stage !Q\$3:Q9,Arrive !Q\$2) | =SUM(Stage !R\$3:R9,Arrive !R\$2) |
| 10 | =SUM(Stage !O\$3:O10,Arrive !O\$2) | =SUM(Stage !P\$3:P10,Arrive !P\$2) | =SUM(Stage !Q\$3:Q10,Arrive !Q\$2) | =SUM(Stage !R\$3:R10,Arrive !R\$2) |
| 11 | =SUM(Stage !O\$3:O11,Arrive !O\$2) | =SUM(Stage !P\$3:P11,Arrive !P\$2) | =SUM(Stage !Q\$3:Q11,Arrive !Q\$2) | =SUM(Stage !R\$3:R11,Arrive !R\$2) |
| 12 | =SUM(Stage !O\$3:O12,Arrive !O\$2) | =SUM(Stage !P\$3:P12,Arrive !P\$2) | =SUM(Stage !Q\$3:Q12,Arrive !Q\$2) | =SUM(Stage !R\$3:R12,Arrive !R\$2) |
| 13 | =SUM(Stage !O\$3:O13,Arrive !O\$2) | =SUM(Stage !P\$3:P13,Arrive !P\$2) | =SUM(Stage !Q\$3:Q13,Arrive !Q\$2) | =SUM(Stage !R\$3:R13,Arrive !R\$2) |
| 14 | =SUM(Stage !O\$3:O14,Arrive !O\$2) | =SUM(Stage !P\$3:P14,Arrive !P\$2) | =SUM(Stage !Q\$3:Q14,Arrive !Q\$2) | =SUM(Stage !R\$3:R14,Arrive !R\$2) |
| 15 | =SUM(Stage !O\$3:O15,Arrive !O\$2) | =SUM(Stage !P\$3:P15,Arrive !P\$2) | =SUM(Stage !Q\$3:Q15,Arrive !Q\$2) | =SUM(Stage !R\$3:R15,Arrive !R\$2) |
| 16 | =SUM(Stage !O\$3:O16,Arrive !O\$2) | =SUM(Stage !P\$3:P16,Arrive !P\$2) | =SUM(Stage !Q\$3:Q16,Arrive !Q\$2) | =SUM(Stage !R\$3:R16,Arrive !R\$2) |

A Candidate, Z2999, 9999

| | K | L | M | N |
|----|------------------------------------|------------------------------------|------------------------------------|------------------------------------|
| 1 | | | | |
| 2 | 0.305555555555556 | 0.319444444444444 | 0.333333333333333 | 0.347222222222222 |
| 3 | | | | |
| 4 | =SUM(Stage !K\$3:K4,Arrive !K\$2) | =SUM(Stage !L\$3:L4,Arrive !L\$2) | =SUM(Stage !M\$3:M4,Arrive !M\$2) | =SUM(Stage !N\$3:N4,Arrive !N\$2) |
| 5 | =SUM(Stage !K\$3:K5,Arrive !K\$2) | =SUM(Stage !L\$3:L5,Arrive !L\$2) | =SUM(Stage !M\$3:M5,Arrive !M\$2) | =SUM(Stage !N\$3:N5,Arrive !N\$2) |
| 6 | =SUM(Stage !K\$3:K6,Arrive !K\$2) | =SUM(Stage !L\$3:L6,Arrive !L\$2) | =SUM(Stage !M\$3:M6,Arrive !M\$2) | =SUM(Stage !N\$3:N6,Arrive !N\$2) |
| 7 | =SUM(Stage !K\$3:K7,Arrive !K\$2) | =SUM(Stage !L\$3:L7,Arrive !L\$2) | =SUM(Stage !M\$3:M7,Arrive !M\$2) | =SUM(Stage !N\$3:N7,Arrive !N\$2) |
| 8 | =SUM(Stage !K\$3:K8,Arrive !K\$2) | =SUM(Stage !L\$3:L8,Arrive !L\$2) | =SUM(Stage !M\$3:M8,Arrive !M\$2) | =SUM(Stage !N\$3:N8,Arrive !N\$2) |
| 9 | =SUM(Stage !K\$3:K9,Arrive !K\$2) | =SUM(Stage !L\$3:L9,Arrive !L\$2) | =SUM(Stage !M\$3:M9,Arrive !M\$2) | =SUM(Stage !N\$3:N9,Arrive !N\$2) |
| 10 | =SUM(Stage !K\$3:K10,Arrive !K\$2) | =SUM(Stage !L\$3:L10,Arrive !L\$2) | =SUM(Stage !M\$3:M10,Arrive !M\$2) | =SUM(Stage !N\$3:N10,Arrive !N\$2) |
| 11 | =SUM(Stage !K\$3:K11,Arrive !K\$2) | =SUM(Stage !L\$3:L11,Arrive !L\$2) | =SUM(Stage !M\$3:M11,Arrive !M\$2) | =SUM(Stage !N\$3:N11,Arrive !N\$2) |
| 12 | =SUM(Stage !K\$3:K12,Arrive !K\$2) | =SUM(Stage !L\$3:L12,Arrive !L\$2) | =SUM(Stage !M\$3:M12,Arrive !M\$2) | =SUM(Stage !N\$3:N12,Arrive !N\$2) |
| 13 | =SUM(Stage !K\$3:K13,Arrive !K\$2) | =SUM(Stage !L\$3:L13,Arrive !L\$2) | =SUM(Stage !M\$3:M13,Arrive !M\$2) | =SUM(Stage !N\$3:N13,Arrive !N\$2) |
| 14 | =SUM(Stage !K\$3:K14,Arrive !K\$2) | =SUM(Stage !L\$3:L14,Arrive !L\$2) | =SUM(Stage !M\$3:M14,Arrive !M\$2) | =SUM(Stage !N\$3:N14,Arrive !N\$2) |
| 15 | =SUM(Stage !K\$3:K15,Arrive !K\$2) | =SUM(Stage !L\$3:L15,Arrive !L\$2) | =SUM(Stage !M\$3:M15,Arrive !M\$2) | =SUM(Stage !N\$3:N15,Arrive !N\$2) |
| 16 | =SUM(Stage !K\$3:K16,Arrive !K\$2) | =SUM(Stage !L\$3:L16,Arrive !L\$2) | =SUM(Stage !M\$3:M16,Arrive !M\$2) | =SUM(Stage !N\$3:N16,Arrive !N\$2) |

A Candidate, ZZ999, 9999

| | O | P | Q | R |
|----|------------------------------------|------------------------------------|------------------------------------|------------------------------------|
| 1 | | | | |
| 2 | 0.361111111111111 | 0.375 | 0.388888888888889 | 0.402777777777778 |
| 3 | | | | |
| 4 | =SUM(Stage_IQ\$3:O4,Arrive_IQ\$2) | =SUM(Stage_IP\$3:P4,Arrive_IP\$2) | =SUM(Stage_IQ\$3:Q4,Arrive_IQ\$2) | =SUM(Stage_IR\$3:R4,Arrive_IR\$2) |
| 5 | =SUM(Stage_IQ\$3:O5,Arrive_IQ\$2) | =SUM(Stage_IP\$3:P5,Arrive_IP\$2) | =SUM(Stage_IQ\$3:Q5,Arrive_IQ\$2) | =SUM(Stage_IR\$3:R5,Arrive_IR\$2) |
| 6 | =SUM(Stage_IQ\$3:O6,Arrive_IQ\$2) | =SUM(Stage_IP\$3:P6,Arrive_IP\$2) | =SUM(Stage_IQ\$3:Q6,Arrive_IQ\$2) | =SUM(Stage_IR\$3:R6,Arrive_IR\$2) |
| 7 | =SUM(Stage_IQ\$3:O7,Arrive_IQ\$2) | =SUM(Stage_IP\$3:P7,Arrive_IP\$2) | =SUM(Stage_IQ\$3:Q7,Arrive_IQ\$2) | =SUM(Stage_IR\$3:R7,Arrive_IR\$2) |
| 8 | =SUM(Stage_IQ\$3:O8,Arrive_IQ\$2) | =SUM(Stage_IP\$3:P8,Arrive_IP\$2) | =SUM(Stage_IQ\$3:Q8,Arrive_IQ\$2) | =SUM(Stage_IR\$3:R8,Arrive_IR\$2) |
| 9 | =SUM(Stage_IQ\$3:O9,Arrive_IQ\$2) | =SUM(Stage_IP\$3:P9,Arrive_IP\$2) | =SUM(Stage_IQ\$3:Q9,Arrive_IQ\$2) | =SUM(Stage_IR\$3:R9,Arrive_IR\$2) |
| 10 | =SUM(Stage_IQ\$3:O10,Arrive_IQ\$2) | =SUM(Stage_IP\$3:P10,Arrive_IP\$2) | =SUM(Stage_IQ\$3:Q10,Arrive_IQ\$2) | =SUM(Stage_IR\$3:R10,Arrive_IR\$2) |
| 11 | =SUM(Stage_IQ\$3:O11,Arrive_IQ\$2) | =SUM(Stage_IP\$3:P11,Arrive_IP\$2) | =SUM(Stage_IQ\$3:Q11,Arrive_IQ\$2) | =SUM(Stage_IR\$3:R11,Arrive_IR\$2) |
| 12 | =SUM(Stage_IQ\$3:O12,Arrive_IQ\$2) | =SUM(Stage_IP\$3:P12,Arrive_IP\$2) | =SUM(Stage_IQ\$3:Q12,Arrive_IQ\$2) | =SUM(Stage_IR\$3:R12,Arrive_IR\$2) |
| 13 | =SUM(Stage_IQ\$3:O13,Arrive_IQ\$2) | =SUM(Stage_IP\$3:P13,Arrive_IP\$2) | =SUM(Stage_IQ\$3:Q13,Arrive_IQ\$2) | =SUM(Stage_IR\$3:R13,Arrive_IR\$2) |
| 14 | =SUM(Stage_IQ\$3:O14,Arrive_IQ\$2) | =SUM(Stage_IP\$3:P14,Arrive_IP\$2) | =SUM(Stage_IQ\$3:Q14,Arrive_IQ\$2) | =SUM(Stage_IR\$3:R14,Arrive_IR\$2) |
| 15 | =SUM(Stage_IQ\$3:O15,Arrive_IQ\$2) | =SUM(Stage_IP\$3:P15,Arrive_IP\$2) | =SUM(Stage_IQ\$3:Q15,Arrive_IQ\$2) | =SUM(Stage_IR\$3:R15,Arrive_IR\$2) |
| 16 | =SUM(Stage_IQ\$3:O16,Arrive_IQ\$2) | =SUM(Stage_IP\$3:P16,Arrive_IP\$2) | =SUM(Stage_IQ\$3:Q16,Arrive_IQ\$2) | =SUM(Stage_IR\$3:R16,Arrive_IR\$2) |

A Candidate, ZZ999, 9999

| | S | T | U | V |
|----|--------------------------------------|------------------------------------|------------------------------------|------------------------------------|
| 1 | | | | |
| 2 | 0.416666666666667 | 0.430555555555556 | 0.444444444444445 | 0.458333333333333 |
| 3 | | | | |
| 4 | =SUM(Stage_ISS\$3:S4,Arrive_ISS\$2) | =SUM(Stage_IT\$3:T4,Arrive_IT\$2) | =SUM(Stage_IU\$3:U4,Arrive_IU\$2) | =SUM(Stage_IV\$3:V4,Arrive_IV\$2) |
| 5 | =SUM(Stage_ISS\$3:S5,Arrive_ISS\$2) | =SUM(Stage_IT\$3:T5,Arrive_IT\$2) | =SUM(Stage_IU\$3:U5,Arrive_IU\$2) | =SUM(Stage_IV\$3:V5,Arrive_IV\$2) |
| 6 | =SUM(Stage_ISS\$3:S6,Arrive_ISS\$2) | =SUM(Stage_IT\$3:T6,Arrive_IT\$2) | =SUM(Stage_IU\$3:U6,Arrive_IU\$2) | =SUM(Stage_IV\$3:V6,Arrive_IV\$2) |
| 7 | =SUM(Stage_ISS\$3:S7,Arrive_ISS\$2) | =SUM(Stage_IT\$3:T7,Arrive_IT\$2) | =SUM(Stage_IU\$3:U7,Arrive_IU\$2) | =SUM(Stage_IV\$3:V7,Arrive_IV\$2) |
| 8 | =SUM(Stage_ISS\$3:S8,Arrive_ISS\$2) | =SUM(Stage_IT\$3:T8,Arrive_IT\$2) | =SUM(Stage_IU\$3:U8,Arrive_IU\$2) | =SUM(Stage_IV\$3:V8,Arrive_IV\$2) |
| 9 | =SUM(Stage_ISS\$3:S9,Arrive_ISS\$2) | =SUM(Stage_IT\$3:T9,Arrive_IT\$2) | =SUM(Stage_IU\$3:U9,Arrive_IU\$2) | =SUM(Stage_IV\$3:V9,Arrive_IV\$2) |
| 10 | =SUM(Stage_ISS\$3:S10,Arrive_ISS\$2) | =SUM(Stage_IT\$3:T10,Arrive_IT\$2) | =SUM(Stage_IU\$3:U10,Arrive_IU\$2) | =SUM(Stage_IV\$3:V10,Arrive_IV\$2) |
| 11 | =SUM(Stage_ISS\$3:S11,Arrive_ISS\$2) | =SUM(Stage_IT\$3:T11,Arrive_IT\$2) | =SUM(Stage_IU\$3:U11,Arrive_IU\$2) | =SUM(Stage_IV\$3:V11,Arrive_IV\$2) |
| 12 | =SUM(Stage_ISS\$3:S12,Arrive_ISS\$2) | =SUM(Stage_IT\$3:T12,Arrive_IT\$2) | =SUM(Stage_IU\$3:U12,Arrive_IU\$2) | =SUM(Stage_IV\$3:V12,Arrive_IV\$2) |
| 13 | =SUM(Stage_ISS\$3:S13,Arrive_ISS\$2) | =SUM(Stage_IT\$3:T13,Arrive_IT\$2) | =SUM(Stage_IU\$3:U13,Arrive_IU\$2) | =SUM(Stage_IV\$3:V13,Arrive_IV\$2) |
| 14 | =SUM(Stage_ISS\$3:S14,Arrive_ISS\$2) | =SUM(Stage_IT\$3:T14,Arrive_IT\$2) | =SUM(Stage_IU\$3:U14,Arrive_IU\$2) | =SUM(Stage_IV\$3:V14,Arrive_IV\$2) |
| 15 | =SUM(Stage_ISS\$3:S15,Arrive_ISS\$2) | =SUM(Stage_IT\$3:T15,Arrive_IT\$2) | =SUM(Stage_IU\$3:U15,Arrive_IU\$2) | =SUM(Stage_IV\$3:V15,Arrive_IV\$2) |
| 16 | =SUM(Stage_ISS\$3:S16,Arrive_ISS\$2) | =SUM(Stage_IT\$3:T16,Arrive_IT\$2) | =SUM(Stage_IU\$3:U16,Arrive_IU\$2) | =SUM(Stage_IV\$3:V16,Arrive_IV\$2) |

A Candidate, ZZ999, 9999

| | W | X | Y | Z |
|----|------------------------------------|------------------------------------|------------------------------------|------------------------------------|
| 1 | | | | |
| 2 | 0.4722222222222222 | 0.4861111111111111 | 0.5 | 0.5138888888888889 |
| 3 | | | | |
| 4 | =SUM(Stage !W\$3:W4,Arrive !W\$2) | =SUM(Stage !X\$3:X4,Arrive !X\$2) | =SUM(Stage !Y\$3:Y4,Arrive !Y\$2) | =SUM(Stage !Z\$3:Z4,Arrive !Z\$2) |
| 5 | =SUM(Stage !W\$3:W5,Arrive !W\$2) | =SUM(Stage !X\$3:X5,Arrive !X\$2) | =SUM(Stage !Y\$3:Y5,Arrive !Y\$2) | =SUM(Stage !Z\$3:Z5,Arrive !Z\$2) |
| 6 | =SUM(Stage !W\$3:W6,Arrive !W\$2) | =SUM(Stage !X\$3:X6,Arrive !X\$2) | =SUM(Stage !Y\$3:Y6,Arrive !Y\$2) | =SUM(Stage !Z\$3:Z6,Arrive !Z\$2) |
| 7 | =SUM(Stage !W\$3:W7,Arrive !W\$2) | =SUM(Stage !X\$3:X7,Arrive !X\$2) | =SUM(Stage !Y\$3:Y7,Arrive !Y\$2) | =SUM(Stage !Z\$3:Z7,Arrive !Z\$2) |
| 8 | =SUM(Stage !W\$3:W8,Arrive !W\$2) | =SUM(Stage !X\$3:X8,Arrive !X\$2) | =SUM(Stage !Y\$3:Y8,Arrive !Y\$2) | =SUM(Stage !Z\$3:Z8,Arrive !Z\$2) |
| 9 | =SUM(Stage !W\$3:W9,Arrive !W\$2) | =SUM(Stage !X\$3:X9,Arrive !X\$2) | =SUM(Stage !Y\$3:Y9,Arrive !Y\$2) | =SUM(Stage !Z\$3:Z9,Arrive !Z\$2) |
| 10 | =SUM(Stage !W\$3:W10,Arrive !W\$2) | =SUM(Stage !X\$3:X10,Arrive !X\$2) | =SUM(Stage !Y\$3:Y10,Arrive !Y\$2) | =SUM(Stage !Z\$3:Z10,Arrive !Z\$2) |
| 11 | =SUM(Stage !W\$3:W11,Arrive !W\$2) | =SUM(Stage !X\$3:X11,Arrive !X\$2) | =SUM(Stage !Y\$3:Y11,Arrive !Y\$2) | =SUM(Stage !Z\$3:Z11,Arrive !Z\$2) |
| 12 | =SUM(Stage !W\$3:W12,Arrive !W\$2) | =SUM(Stage !X\$3:X12,Arrive !X\$2) | =SUM(Stage !Y\$3:Y12,Arrive !Y\$2) | =SUM(Stage !Z\$3:Z12,Arrive !Z\$2) |
| 13 | =SUM(Stage !W\$3:W13,Arrive !W\$2) | =SUM(Stage !X\$3:X13,Arrive !X\$2) | =SUM(Stage !Y\$3:Y13,Arrive !Y\$2) | =SUM(Stage !Z\$3:Z13,Arrive !Z\$2) |
| 14 | =SUM(Stage !W\$3:W14,Arrive !W\$2) | =SUM(Stage !X\$3:X14,Arrive !X\$2) | =SUM(Stage !Y\$3:Y14,Arrive !Y\$2) | =SUM(Stage !Z\$3:Z14,Arrive !Z\$2) |
| 15 | =SUM(Stage !W\$3:W15,Arrive !W\$2) | =SUM(Stage !X\$3:X15,Arrive !X\$2) | =SUM(Stage !Y\$3:Y15,Arrive !Y\$2) | =SUM(Stage !Z\$3:Z15,Arrive !Z\$2) |
| 16 | =SUM(Stage !W\$3:W16,Arrive !W\$2) | =SUM(Stage !X\$3:X16,Arrive !X\$2) | =SUM(Stage !Y\$3:Y16,Arrive !Y\$2) | =SUM(Stage !Z\$3:Z16,Arrive !Z\$2) |

A Candidate, ZZ999, 9999

| | AA | AB | AC |
|----|---------------------------------------|---------------------------------------|---------------------------------------|
| 1 | | | |
| 2 | 0.5277777777777778 | 0.5416666666666667 | 0.5555555555555555 |
| 3 | | | |
| 4 | =SUM(Stage !AA\$3:AA4,Arrive !AA\$2) | =SUM(Stage !AB\$3:AB4,Arrive !AB\$2) | =SUM(Stage !AC\$3:AC4,Arrive !AC\$2) |
| 5 | =SUM(Stage !AA\$3:AA5,Arrive !AA\$2) | =SUM(Stage !AB\$3:AB5,Arrive !AB\$2) | =SUM(Stage !AC\$3:AC5,Arrive !AC\$2) |
| 6 | =SUM(Stage !AA\$3:AA6,Arrive !AA\$2) | =SUM(Stage !AB\$3:AB6,Arrive !AB\$2) | =SUM(Stage !AC\$3:AC6,Arrive !AC\$2) |
| 7 | =SUM(Stage !AA\$3:AA7,Arrive !AA\$2) | =SUM(Stage !AB\$3:AB7,Arrive !AB\$2) | =SUM(Stage !AC\$3:AC7,Arrive !AC\$2) |
| 8 | =SUM(Stage !AA\$3:AA8,Arrive !AA\$2) | =SUM(Stage !AB\$3:AB8,Arrive !AB\$2) | =SUM(Stage !AC\$3:AC8,Arrive !AC\$2) |
| 9 | =SUM(Stage !AA\$3:AA9,Arrive !AA\$2) | =SUM(Stage !AB\$3:AB9,Arrive !AB\$2) | =SUM(Stage !AC\$3:AC9,Arrive !AC\$2) |
| 10 | =SUM(Stage !AA\$3:AA10,Arrive !AA\$2) | =SUM(Stage !AB\$3:AB10,Arrive !AB\$2) | =SUM(Stage !AC\$3:AC10,Arrive !AC\$2) |
| 11 | =SUM(Stage !AA\$3:AA11,Arrive !AA\$2) | =SUM(Stage !AB\$3:AB11,Arrive !AB\$2) | =SUM(Stage !AC\$3:AC11,Arrive !AC\$2) |
| 12 | =SUM(Stage !AA\$3:AA12,Arrive !AA\$2) | =SUM(Stage !AB\$3:AB12,Arrive !AB\$2) | =SUM(Stage !AC\$3:AC12,Arrive !AC\$2) |
| 13 | =SUM(Stage !AA\$3:AA13,Arrive !AA\$2) | =SUM(Stage !AB\$3:AB13,Arrive !AB\$2) | =SUM(Stage !AC\$3:AC13,Arrive !AC\$2) |
| 14 | =SUM(Stage !AA\$3:AA14,Arrive !AA\$2) | =SUM(Stage !AB\$3:AB14,Arrive !AB\$2) | =SUM(Stage !AC\$3:AC14,Arrive !AC\$2) |
| 15 | =SUM(Stage !AA\$3:AA15,Arrive !AA\$2) | =SUM(Stage !AB\$3:AB15,Arrive !AB\$2) | =SUM(Stage !AC\$3:AC15,Arrive !AC\$2) |
| 16 | =SUM(Stage !AA\$3:AA16,Arrive !AA\$2) | =SUM(Stage !AB\$3:AB16,Arrive !AB\$2) | =SUM(Stage !AC\$3:AC16,Arrive !AC\$2) |

A Candidate, ZZ999, 9999

| | AD | AE | AF |
|----|---------------------------------------|---------------------------------------|---------------------------------------|
| 1 | | | |
| 2 | 0.5694444444444444 | 0.5833333333333333 | 0.5972222222222222 |
| 3 | | | |
| 4 | =SUM(Stage !AD\$3:AD4,Arrive !AD\$2) | =SUM(Stage !AE\$3:AE4,Arrive !AE\$2) | =SUM(Stage !AF\$3:AF4,Arrive !AF\$2) |
| 5 | =SUM(Stage !AD\$3:AD5,Arrive !AD\$2) | =SUM(Stage !AE\$3:AE5,Arrive !AE\$2) | =SUM(Stage !AF\$3:AF5,Arrive !AF\$2) |
| 6 | =SUM(Stage !AD\$3:AD6,Arrive !AD\$2) | =SUM(Stage !AE\$3:AE6,Arrive !AE\$2) | =SUM(Stage !AF\$3:AF6,Arrive !AF\$2) |
| 7 | =SUM(Stage !AD\$3:AD7,Arrive !AD\$2) | =SUM(Stage !AE\$3:AE7,Arrive !AE\$2) | =SUM(Stage !AF\$3:AF7,Arrive !AF\$2) |
| 8 | =SUM(Stage !AD\$3:AD8,Arrive !AD\$2) | =SUM(Stage !AE\$3:AE8,Arrive !AE\$2) | =SUM(Stage !AF\$3:AF8,Arrive !AF\$2) |
| 9 | =SUM(Stage !AD\$3:AD9,Arrive !AD\$2) | =SUM(Stage !AE\$3:AE9,Arrive !AE\$2) | =SUM(Stage !AF\$3:AF9,Arrive !AF\$2) |
| 10 | =SUM(Stage !AD\$3:AD10,Arrive !AD\$2) | =SUM(Stage !AE\$3:AE10,Arrive !AE\$2) | =SUM(Stage !AF\$3:AF10,Arrive !AF\$2) |
| 11 | =SUM(Stage !AD\$3:AD11,Arrive !AD\$2) | =SUM(Stage !AE\$3:AE11,Arrive !AE\$2) | =SUM(Stage !AF\$3:AF11,Arrive !AF\$2) |
| 12 | =SUM(Stage !AD\$3:AD12,Arrive !AD\$2) | =SUM(Stage !AE\$3:AE12,Arrive !AE\$2) | =SUM(Stage !AF\$3:AF12,Arrive !AF\$2) |
| 13 | =SUM(Stage !AD\$3:AD13,Arrive !AD\$2) | =SUM(Stage !AE\$3:AE13,Arrive !AE\$2) | =SUM(Stage !AF\$3:AF13,Arrive !AF\$2) |
| 14 | =SUM(Stage !AD\$3:AD14,Arrive !AD\$2) | =SUM(Stage !AE\$3:AE14,Arrive !AE\$2) | =SUM(Stage !AF\$3:AF14,Arrive !AF\$2) |
| 15 | =SUM(Stage !AD\$3:AD15,Arrive !AD\$2) | =SUM(Stage !AE\$3:AE15,Arrive !AE\$2) | =SUM(Stage !AF\$3:AF15,Arrive !AF\$2) |
| 16 | =SUM(Stage !AD\$3:AD16,Arrive !AD\$2) | =SUM(Stage !AE\$3:AE16,Arrive !AE\$2) | =SUM(Stage !AF\$3:AF16,Arrive !AF\$2) |

A Candidate, ZZ999, 9999

| | AG | AH | AI |
|----|---------------------------------------|---------------------------------------|---------------------------------------|
| 1 | | | |
| 2 | 0.6111111111111111 | 0.625 | 0.6388888888888889 |
| 3 | | | |
| 4 | =SUM(Stage !AG\$3:AG4,Arrive !AG\$2) | =SUM(Stage !AH\$3:AH4,Arrive !AH\$2) | =SUM(Stage !AI\$3:AI4,Arrive !AI\$2) |
| 5 | =SUM(Stage !AG\$3:AG5,Arrive !AG\$2) | =SUM(Stage !AH\$3:AH5,Arrive !AH\$2) | =SUM(Stage !AI\$3:AI5,Arrive !AI\$2) |
| 6 | =SUM(Stage !AG\$3:AG6,Arrive !AG\$2) | =SUM(Stage !AH\$3:AH6,Arrive !AH\$2) | =SUM(Stage !AI\$3:AI6,Arrive !AI\$2) |
| 7 | =SUM(Stage !AG\$3:AG7,Arrive !AG\$2) | =SUM(Stage !AH\$3:AH7,Arrive !AH\$2) | =SUM(Stage !AI\$3:AI7,Arrive !AI\$2) |
| 8 | =SUM(Stage !AG\$3:AG8,Arrive !AG\$2) | =SUM(Stage !AH\$3:AH8,Arrive !AH\$2) | =SUM(Stage !AI\$3:AI8,Arrive !AI\$2) |
| 9 | =SUM(Stage !AG\$3:AG9,Arrive !AG\$2) | =SUM(Stage !AH\$3:AH9,Arrive !AH\$2) | =SUM(Stage !AI\$3:AI9,Arrive !AI\$2) |
| 10 | =SUM(Stage !AG\$3:AG10,Arrive !AG\$2) | =SUM(Stage !AH\$3:AH10,Arrive !AH\$2) | =SUM(Stage !AI\$3:AI10,Arrive !AI\$2) |
| 11 | =SUM(Stage !AG\$3:AG11,Arrive !AG\$2) | =SUM(Stage !AH\$3:AH11,Arrive !AH\$2) | =SUM(Stage !AI\$3:AI11,Arrive !AI\$2) |
| 12 | =SUM(Stage !AG\$3:AG12,Arrive !AG\$2) | =SUM(Stage !AH\$3:AH12,Arrive !AH\$2) | =SUM(Stage !AI\$3:AI12,Arrive !AI\$2) |
| 13 | =SUM(Stage !AG\$3:AG13,Arrive !AG\$2) | =SUM(Stage !AH\$3:AH13,Arrive !AH\$2) | =SUM(Stage !AI\$3:AI13,Arrive !AI\$2) |
| 14 | =SUM(Stage !AG\$3:AG14,Arrive !AG\$2) | =SUM(Stage !AH\$3:AH14,Arrive !AH\$2) | =SUM(Stage !AI\$3:AI14,Arrive !AI\$2) |
| 15 | =SUM(Stage !AG\$3:AG15,Arrive !AG\$2) | =SUM(Stage !AH\$3:AH15,Arrive !AH\$2) | =SUM(Stage !AI\$3:AI15,Arrive !AI\$2) |
| 16 | =SUM(Stage !AG\$3:AG16,Arrive !AG\$2) | =SUM(Stage !AH\$3:AH16,Arrive !AH\$2) | =SUM(Stage !AI\$3:AI16,Arrive !AI\$2) |

A Candidate, ZZ999, 9999

| | AJ | AK | AL |
|----|---------------------------------------|---------------------------------------|---------------------------------------|
| 1 | | | |
| 2 | 0.652777777777777 | 0.666666666666666 | 0.680555555555555 |
| 3 | | | |
| 4 | =SUM(Stage !AJ\$3:AJ4,Arrive !AJ\$2) | =SUM(Stage !AK\$3:AK4,Arrive !AK\$2) | =SUM(Stage !AL\$3:AL4,Arrive !AL\$2) |
| 5 | =SUM(Stage !AJ\$3:AJ5,Arrive !AJ\$2) | =SUM(Stage !AK\$3:AK5,Arrive !AK\$2) | =SUM(Stage !AL\$3:AL5,Arrive !AL\$2) |
| 6 | =SUM(Stage !AJ\$3:AJ6,Arrive !AJ\$2) | =SUM(Stage !AK\$3:AK6,Arrive !AK\$2) | =SUM(Stage !AL\$3:AL6,Arrive !AL\$2) |
| 7 | =SUM(Stage !AJ\$3:AJ7,Arrive !AJ\$2) | =SUM(Stage !AK\$3:AK7,Arrive !AK\$2) | =SUM(Stage !AL\$3:AL7,Arrive !AL\$2) |
| 8 | =SUM(Stage !AJ\$3:AJ8,Arrive !AJ\$2) | =SUM(Stage !AK\$3:AK8,Arrive !AK\$2) | =SUM(Stage !AL\$3:AL8,Arrive !AL\$2) |
| 9 | =SUM(Stage !AJ\$3:AJ9,Arrive !AJ\$2) | =SUM(Stage !AK\$3:AK9,Arrive !AK\$2) | =SUM(Stage !AL\$3:AL9,Arrive !AL\$2) |
| 10 | =SUM(Stage !AJ\$3:AJ10,Arrive !AJ\$2) | =SUM(Stage !AK\$3:AK10,Arrive !AK\$2) | =SUM(Stage !AL\$3:AL10,Arrive !AL\$2) |
| 11 | =SUM(Stage !AJ\$3:AJ11,Arrive !AJ\$2) | =SUM(Stage !AK\$3:AK11,Arrive !AK\$2) | =SUM(Stage !AL\$3:AL11,Arrive !AL\$2) |
| 12 | =SUM(Stage !AJ\$3:AJ12,Arrive !AJ\$2) | =SUM(Stage !AK\$3:AK12,Arrive !AK\$2) | =SUM(Stage !AL\$3:AL12,Arrive !AL\$2) |
| 13 | =SUM(Stage !AJ\$3:AJ13,Arrive !AJ\$2) | =SUM(Stage !AK\$3:AK13,Arrive !AK\$2) | =SUM(Stage !AL\$3:AL13,Arrive !AL\$2) |
| 14 | =SUM(Stage !AJ\$3:AJ14,Arrive !AJ\$2) | =SUM(Stage !AK\$3:AK14,Arrive !AK\$2) | =SUM(Stage !AL\$3:AL14,Arrive !AL\$2) |
| 15 | =SUM(Stage !AJ\$3:AJ15,Arrive !AJ\$2) | =SUM(Stage !AK\$3:AK15,Arrive !AK\$2) | =SUM(Stage !AL\$3:AL15,Arrive !AL\$2) |
| 16 | =SUM(Stage !AJ\$3:AJ16,Arrive !AJ\$2) | =SUM(Stage !AK\$3:AK16,Arrive !AK\$2) | =SUM(Stage !AL\$3:AL16,Arrive !AL\$2) |

A Candidate, ZZ999, 9999

| | AM | AN | AO |
|----|---------------------------------------|---------------------------------------|---------------------------------------|
| 1 | | | |
| 2 | 0.694444444444444 | 0.708333333333333 | 0.722222222222222 |
| 3 | | | |
| 4 | =SUM(Stage !AM\$3:AM4,Arrive !AM\$2) | =SUM(Stage !AN\$3:AN4,Arrive !AN\$2) | =SUM(Stage !AO\$3:AO4,Arrive !AO\$2) |
| 5 | =SUM(Stage !AM\$3:AM5,Arrive !AM\$2) | =SUM(Stage !AN\$3:AN5,Arrive !AN\$2) | =SUM(Stage !AO\$3:AO5,Arrive !AO\$2) |
| 6 | =SUM(Stage !AM\$3:AM6,Arrive !AM\$2) | =SUM(Stage !AN\$3:AN6,Arrive !AN\$2) | =SUM(Stage !AO\$3:AO6,Arrive !AO\$2) |
| 7 | =SUM(Stage !AM\$3:AM7,Arrive !AM\$2) | =SUM(Stage !AN\$3:AN7,Arrive !AN\$2) | =SUM(Stage !AO\$3:AO7,Arrive !AO\$2) |
| 8 | =SUM(Stage !AM\$3:AM8,Arrive !AM\$2) | =SUM(Stage !AN\$3:AN8,Arrive !AN\$2) | =SUM(Stage !AO\$3:AO8,Arrive !AO\$2) |
| 9 | =SUM(Stage !AM\$3:AM9,Arrive !AM\$2) | =SUM(Stage !AN\$3:AN9,Arrive !AN\$2) | =SUM(Stage !AO\$3:AO9,Arrive !AO\$2) |
| 10 | =SUM(Stage !AM\$3:AM10,Arrive !AM\$2) | =SUM(Stage !AN\$3:AN10,Arrive !AN\$2) | =SUM(Stage !AO\$3:AO10,Arrive !AO\$2) |
| 11 | =SUM(Stage !AM\$3:AM11,Arrive !AM\$2) | =SUM(Stage !AN\$3:AN11,Arrive !AN\$2) | =SUM(Stage !AO\$3:AO11,Arrive !AO\$2) |
| 12 | =SUM(Stage !AM\$3:AM12,Arrive !AM\$2) | =SUM(Stage !AN\$3:AN12,Arrive !AN\$2) | =SUM(Stage !AO\$3:AO12,Arrive !AO\$2) |
| 13 | =SUM(Stage !AM\$3:AM13,Arrive !AM\$2) | =SUM(Stage !AN\$3:AN13,Arrive !AN\$2) | =SUM(Stage !AO\$3:AO13,Arrive !AO\$2) |
| 14 | =SUM(Stage !AM\$3:AM14,Arrive !AM\$2) | =SUM(Stage !AN\$3:AN14,Arrive !AN\$2) | =SUM(Stage !AO\$3:AO14,Arrive !AO\$2) |
| 15 | =SUM(Stage !AM\$3:AM15,Arrive !AM\$2) | =SUM(Stage !AN\$3:AN15,Arrive !AN\$2) | =SUM(Stage !AO\$3:AO15,Arrive !AO\$2) |
| 16 | =SUM(Stage !AM\$3:AM16,Arrive !AM\$2) | =SUM(Stage !AN\$3:AN16,Arrive !AN\$2) | =SUM(Stage !AO\$3:AO16,Arrive !AO\$2) |

A Candidate, ZZ999, 9999

| | AP | AQ | AR |
|----|---------------------------------------|---------------------------------------|---------------------------------------|
| 1 | | | |
| 2 | 0.736111111111111 | 0.749999999999999 | 0.763888888888888 |
| 3 | | | |
| 4 | =SUM(Stage !AP\$3:AP4,Arrive !AP\$2) | =SUM(Stage !AQ\$3:AQ4,Arrive !AQ\$2) | =SUM(Stage !AR\$3:AR4,Arrive !AR\$2) |
| 5 | =SUM(Stage !AP\$3:AP5,Arrive !AP\$2) | =SUM(Stage !AQ\$3:AQ5,Arrive !AQ\$2) | =SUM(Stage !AR\$3:AR5,Arrive !AR\$2) |
| 6 | =SUM(Stage !AP\$3:AP6,Arrive !AP\$2) | =SUM(Stage !AQ\$3:AQ6,Arrive !AQ\$2) | =SUM(Stage !AR\$3:AR6,Arrive !AR\$2) |
| 7 | =SUM(Stage !AP\$3:AP7,Arrive !AP\$2) | =SUM(Stage !AQ\$3:AQ7,Arrive !AQ\$2) | =SUM(Stage !AR\$3:AR7,Arrive !AR\$2) |
| 8 | =SUM(Stage !AP\$3:AP8,Arrive !AP\$2) | =SUM(Stage !AQ\$3:AQ8,Arrive !AQ\$2) | =SUM(Stage !AR\$3:AR8,Arrive !AR\$2) |
| 9 | =SUM(Stage !AP\$3:AP9,Arrive !AP\$2) | =SUM(Stage !AQ\$3:AQ9,Arrive !AQ\$2) | =SUM(Stage !AR\$3:AR9,Arrive !AR\$2) |
| 10 | =SUM(Stage !AP\$3:AP10,Arrive !AP\$2) | =SUM(Stage !AQ\$3:AQ10,Arrive !AQ\$2) | =SUM(Stage !AR\$3:AR10,Arrive !AR\$2) |
| 11 | =SUM(Stage !AP\$3:AP11,Arrive !AP\$2) | =SUM(Stage !AQ\$3:AQ11,Arrive !AQ\$2) | =SUM(Stage !AR\$3:AR11,Arrive !AR\$2) |
| 12 | =SUM(Stage !AP\$3:AP12,Arrive !AP\$2) | =SUM(Stage !AQ\$3:AQ12,Arrive !AQ\$2) | =SUM(Stage !AR\$3:AR12,Arrive !AR\$2) |
| 13 | =SUM(Stage !AP\$3:AP13,Arrive !AP\$2) | =SUM(Stage !AQ\$3:AQ13,Arrive !AQ\$2) | =SUM(Stage !AR\$3:AR13,Arrive !AR\$2) |
| 14 | =SUM(Stage !AP\$3:AP14,Arrive !AP\$2) | =SUM(Stage !AQ\$3:AQ14,Arrive !AQ\$2) | =SUM(Stage !AR\$3:AR14,Arrive !AR\$2) |
| 15 | =SUM(Stage !AP\$3:AP15,Arrive !AP\$2) | =SUM(Stage !AQ\$3:AQ15,Arrive !AQ\$2) | =SUM(Stage !AR\$3:AR15,Arrive !AR\$2) |
| 16 | =SUM(Stage !AP\$3:AP16,Arrive !AP\$2) | =SUM(Stage !AQ\$3:AQ16,Arrive !AQ\$2) | =SUM(Stage !AR\$3:AR16,Arrive !AR\$2) |

A Candidate, ZZ999, 9999

| | AS | AT | AU |
|----|---------------------------------------|---------------------------------------|---------------------------------------|
| 1 | | | |
| 2 | 0.777777777777777 | 0.791666666666666 | 0.805555555555555 |
| 3 | | | |
| 4 | =SUM(Stage !AS\$3:AS4,Arrive !AS\$2) | =SUM(Stage !AT\$3:AT4,Arrive !AT\$2) | =SUM(Stage !AU\$3:AU4,Arrive !AU\$2) |
| 5 | =SUM(Stage !AS\$3:AS5,Arrive !AS\$2) | =SUM(Stage !AT\$3:AT5,Arrive !AT\$2) | =SUM(Stage !AU\$3:AU5,Arrive !AU\$2) |
| 6 | =SUM(Stage !AS\$3:AS6,Arrive !AS\$2) | =SUM(Stage !AT\$3:AT6,Arrive !AT\$2) | =SUM(Stage !AU\$3:AU6,Arrive !AU\$2) |
| 7 | =SUM(Stage !AS\$3:AS7,Arrive !AS\$2) | =SUM(Stage !AT\$3:AT7,Arrive !AT\$2) | =SUM(Stage !AU\$3:AU7,Arrive !AU\$2) |
| 8 | =SUM(Stage !AS\$3:AS8,Arrive !AS\$2) | =SUM(Stage !AT\$3:AT8,Arrive !AT\$2) | =SUM(Stage !AU\$3:AU8,Arrive !AU\$2) |
| 9 | =SUM(Stage !AS\$3:AS9,Arrive !AS\$2) | =SUM(Stage !AT\$3:AT9,Arrive !AT\$2) | =SUM(Stage !AU\$3:AU9,Arrive !AU\$2) |
| 10 | =SUM(Stage !AS\$3:AS10,Arrive !AS\$2) | =SUM(Stage !AT\$3:AT10,Arrive !AT\$2) | =SUM(Stage !AU\$3:AU10,Arrive !AU\$2) |
| 11 | =SUM(Stage !AS\$3:AS11,Arrive !AS\$2) | =SUM(Stage !AT\$3:AT11,Arrive !AT\$2) | =SUM(Stage !AU\$3:AU11,Arrive !AU\$2) |
| 12 | =SUM(Stage !AS\$3:AS12,Arrive !AS\$2) | =SUM(Stage !AT\$3:AT12,Arrive !AT\$2) | =SUM(Stage !AU\$3:AU12,Arrive !AU\$2) |
| 13 | =SUM(Stage !AS\$3:AS13,Arrive !AS\$2) | =SUM(Stage !AT\$3:AT13,Arrive !AT\$2) | =SUM(Stage !AU\$3:AU13,Arrive !AU\$2) |
| 14 | =SUM(Stage !AS\$3:AS14,Arrive !AS\$2) | =SUM(Stage !AT\$3:AT14,Arrive !AT\$2) | =SUM(Stage !AU\$3:AU14,Arrive !AU\$2) |
| 15 | =SUM(Stage !AS\$3:AS15,Arrive !AS\$2) | =SUM(Stage !AT\$3:AT15,Arrive !AT\$2) | =SUM(Stage !AU\$3:AU15,Arrive !AU\$2) |
| 16 | =SUM(Stage !AS\$3:AS16,Arrive !AS\$2) | =SUM(Stage !AT\$3:AT16,Arrive !AT\$2) | =SUM(Stage !AU\$3:AU16,Arrive !AU\$2) |

A Candidate, ZZ999, 99:

| | AV | AW |
|----|---------------------------------------|---------------------------------------|
| 1 | | |
| 2 | 0.8194444444444443 | 0.833333333333332 |
| 3 | | |
| 4 | =SUM(Stage !AV\$3:AV4,Arrive !AV\$2) | =SUM(Stage !AW\$3:AW4,Arrive !AW\$2) |
| 5 | =SUM(Stage !AV\$3:AV5,Arrive !AV\$2) | =SUM(Stage !AW\$3:AW5,Arrive !AW\$2) |
| 6 | =SUM(Stage !AV\$3:AV6,Arrive !AV\$2) | =SUM(Stage !AW\$3:AW6,Arrive !AW\$2) |
| 7 | =SUM(Stage !AV\$3:AV7,Arrive !AV\$2) | =SUM(Stage !AW\$3:AW7,Arrive !AW\$2) |
| 8 | =SUM(Stage !AV\$3:AV8,Arrive !AV\$2) | =SUM(Stage !AW\$3:AW8,Arrive !AW\$2) |
| 9 | =SUM(Stage !AV\$3:AV9,Arrive !AV\$2) | =SUM(Stage !AW\$3:AW9,Arrive !AW\$2) |
| 10 | =SUM(Stage !AV\$3:AV10,Arrive !AV\$2) | =SUM(Stage !AW\$3:AW10,Arrive !AW\$2) |
| 11 | =SUM(Stage !AV\$3:AV11,Arrive !AV\$2) | =SUM(Stage !AW\$3:AW11,Arrive !AW\$2) |
| 12 | =SUM(Stage !AV\$3:AV12,Arrive !AV\$2) | =SUM(Stage !AW\$3:AW12,Arrive !AW\$2) |
| 13 | =SUM(Stage !AV\$3:AV13,Arrive !AV\$2) | =SUM(Stage !AW\$3:AW13,Arrive !AW\$2) |
| 14 | =SUM(Stage !AV\$3:AV14,Arrive !AV\$2) | =SUM(Stage !AW\$3:AW14,Arrive !AW\$2) |
| 15 | =SUM(Stage !AV\$3:AV15,Arrive !AV\$2) | =SUM(Stage !AW\$3:AW15,Arrive !AW\$2) |
| 16 | =SUM(Stage !AV\$3:AV16,Arrive !AV\$2) | =SUM(Stage !AW\$3:AW16,Arrive !AW\$2) |

Conditional Formatting Rules Manager ? X

Show formatting rules for: Current Selection

New Rule...
Edit Rule...
Delete Rule
▲
▼

| Rule (applied in order shown) | Format | Applies to | Stop If True |
|-------------------------------|------------|---|-------------------------------------|
| Cell Value <= D\$2+\$B4 | AaBbCcYyZz | =D\$4:\$AW\$16 ↑ | <input checked="" type="checkbox"/> |

- | | | |
|------------------------|---|--------|
| Conditional formatting | Cell range D4 to AW16 only conditional formatting | 1 mark |
| | Cell value <= | 1 mark |
| | D\$2 | 1 mark |
| | + \$B4 | 1 mark |
| | Black text on light green background | 1 mark |
| | Other conditional formatting removed | 1 mark |

Task 5 – Video file TBC_

| | | |
|------------------|--|--------|
| Video TBC | Image ratio of software set to 16:9 | 1 mark |
| | Resolution 854 × 480 | 1 mark |
| | All sound removed from the clip | 1 mark |
| | First 12.5 seconds removed | 1 mark |
| | Clip trimmed to 2 seconds | 1 mark |
| | Speed of the clip halved so it lasts 4 seconds | 1 mark |
| | Clip saved in mp4 format as TBC_ZZ999_9999.mp4 | 1 mark |

Task 6 – Image file TBC1_

| | | |
|-------------------|--|--------|
| Image TBC1 | Still image extracted from last frame | 1 mark |
| | Saved as TBC1 in suitable file format | 1 mark |

Task 7 – Video file TPT_

| | | |
|------------------|--|--------|
| Video TPT | Split into 3 sections ... | 1 mark |
| | ... after 3 seconds | 1 mark |
| | ... and 4.5 seconds (will appear as 4.2) | 1 mark |
| | Middle section speeded up ... | 1 mark |
| | ... ×1.25 speed | 1 mark |

Tasks 8 and 9 – Video file TVideo_

| | | | |
|---------------|-----------------|---|--------|
| Video TVideo_ | 0 seconds: | Title background set to 20-Bus.jpg | 1 mark |
| | 2 seconds | name of company placed | 1 mark |
| | | Background image remains | 1 mark |
| | | Tawara Bus Company 100% accurate | 1 mark |
| | | Text in sans-serif font of appropriate size | 1 mark |
| | | Bottom left of screen | 1 mark |
| | | Yellow text | 1 mark |
| | 4 seconds | subtitle appears | 1 mark |
| | | Title and bg retained with no adjustment/movement | 1 mark |
| | | Professional & Punctual 100% accurate in bottom right | 1 mark |
| | | Set as an appropriate subtitle | 1 mark |
| | | Audio clip TBC starts | 1 mark |
| | 8 Seconds | TPT Clip placed as specified with text removed | 1 mark |
| | (17) seconds | Title background set to 20-NewBus.jpg | 1 mark |
| | | Top of image cropped ... | 1 mark |
| | | ... to remove blue roof | 1 mark |
| | (21) seconds | 20-OldBus.jpg placed | 1 mark |
| | (23) seconds | 20-Bike.jpg placed | 1 mark |
| | (25) seconds | video clip TBC placed | 1 mark |
| | (29) seconds | TBC1 placed | 1 mark |
| | | Still image from TBC1 as background for credits | 1 mark |
| | | Credits in right half of screen. | 1 mark |
| | | Credits scroll up the screen | 1 mark |
| | Credits include | Edited by: Candidate details in appropriate format | 1 mark |
| | | Filmed by: TMBvideo | 1 mark |
| | | On location in Tawara | 1 mark |
| | | Produced for: Tawara Bus Company | 1 mark |
| | | Appropriate blank line(s) as spacing between credits | 1 mark |
| | | All text is a large easily read font with good contrast | 1 mark |
| | | Appropriate length for credits | 1 mark |
| | | Movie exported / saved in mp4 format | 1 mark |