



UNIVERSITY OF CAMBRIDGE INTERNATIONAL EXAMINATIONS  
International General Certificate of Secondary Education

CANDIDATE  
NAME

CENTRE  
NUMBER

--	--	--	--	--

CANDIDATE  
NUMBER

--	--	--	--



**MATHEMATICS**

**0580/22**

Paper 2 (Extended)

**October/November 2011**

**1 hour 30 minutes**

Candidates answer on the Question Paper.

Additional Materials:

Electronic calculator  
Mathematical tables (optional)

Geometrical instruments  
Tracing paper (optional)

**READ THESE INSTRUCTIONS FIRST**

Write your Centre number, candidate number and name on all the work you hand in.

Write in dark blue or black pen.

You may use a pencil for any diagrams or graphs.

Do not use staples, paper clips, highlighters, glue or correction fluid.

**DO NOT WRITE IN ANY BARCODES.**

Answer **all** questions.

If working is needed for any question it must be shown below that question.

Electronic calculators should be used.

If the degree of accuracy is not specified in the question, and if the answer is not exact, give the answer to three significant figures. Give answers in degrees to one decimal place.

For  $\pi$ , use either your calculator value or 3.142.

At the end of the examination, fasten all your work securely together.

The number of marks is given in brackets [ ] at the end of each question or part question.

The total of the marks for this paper is 70.

This document consists of **12** printed pages.



- 1 A bus leaves a port every 15 minutes, starting at 09 00.  
The last bus leaves at 17 30.

How many times does a bus leave the port during one day?

Answer ..... [2]

---

- 2 Factorise completely  $ax + bx + ay + by$ .

Answer ..... [2]

---

- 3 Use your calculator to find the value of

(a)  $3^0 \times 2.5^2$ ,

Answer(a) ..... [1]

(b)  $2.5^{-2}$ .

Answer(b) ..... [1]

---

- 4 The cost of making a chair is \$28 correct to the nearest dollar.

Calculate the lower and upper bounds for the cost of making 450 chairs.

Answer lower bound \$ .....

upper bound \$ ..... [2]

---

5 Jiwan incorrectly wrote  $1 + \frac{1}{2} + \frac{1}{3} + \frac{1}{4} = 1\frac{3}{9}$ .

Show the correct working and write down the answer as a mixed number.

For  
Examiner's  
Use

Answer ..... [3]

---

6 The force,  $F$ , between two magnets varies **inversely** as the **square** of the distance,  $d$ , between them.

$$F = 150 \text{ when } d = 2.$$

Calculate  $F$  when  $d = 4$ .

Answer  $F =$  ..... [3]

---

$$7 \quad \begin{pmatrix} 0 & 2 \\ -3 & 4 \end{pmatrix} \begin{pmatrix} a \\ b \end{pmatrix} = \begin{pmatrix} 8 \\ 25 \end{pmatrix}$$

Find the value of  $a$  and the value of  $b$ .

*For  
Examiner's  
Use*

*Answer a =* .....

*b =* ..... [3]

---

**8** A cruise ship travels at 22 knots.

[1 knot is 1.852 kilometres per hour.]

Convert this speed into metres per second.

*Answer* ..... m/s [3]

---

9 A sequence is given by  $u_1 = \sqrt{1}$ ,  $u_2 = \sqrt{3}$ ,  $u_3 = \sqrt{5}$ ,  $u_4 = \sqrt{7}$ , ...

(a) Find a formula for  $u_n$ , the  $n$ th term.

Answer(a)  $u_n = \dots\dots\dots$  [2]

(b) Find  $u_{29}$ .

Answer(b)  $u_{29} = \dots\dots\dots$  [1]

---

10 Write as a single fraction in its simplest form.

$$\frac{3}{x+10} - \frac{1}{x+4}$$

Answer  $\dots\dots\dots$  [3]

---

11 Find the values of  $m$  and  $n$ .

(a)  $2^m = 0.125$

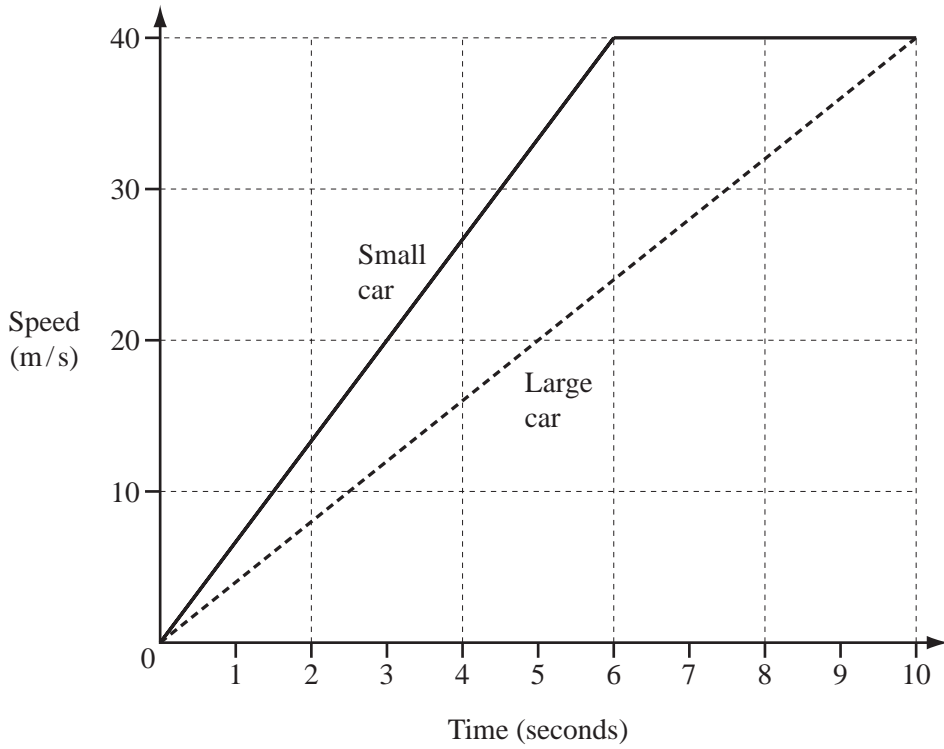
Answer(a)  $m = \dots\dots\dots$  [2]

(b)  $2^{4n} \times 2^{2n} = 512$

Answer(b)  $n = \dots\dots\dots$  [2]

For  
Examiner's  
Use

12

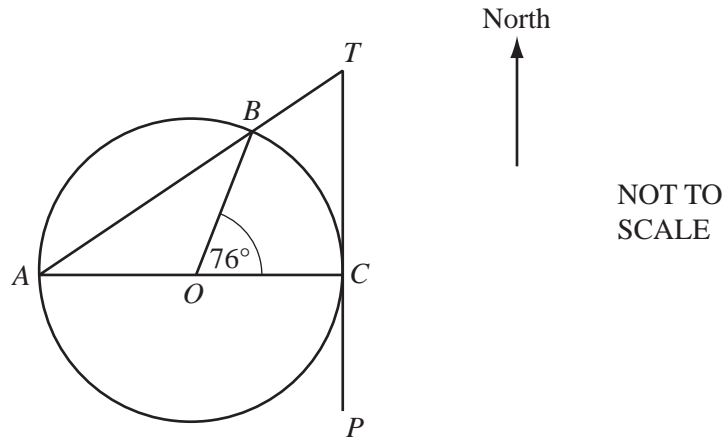


A small car accelerates from 0 m/s to 40 m/s in 6 seconds and then travels at this constant speed.  
A large car accelerates from 0 m/s to 40 m/s in 10 seconds.

Calculate how much further the small car travels in the first 10 seconds.

Answer  $\dots\dots\dots$  m [4]

13



For  
Examiner's  
Use

$AOC$  is a diameter of the circle, centre  $O$ .  
 $AT$  is a straight line that cuts the circle at  $B$ .  
 $PT$  is the tangent to the circle at  $C$ .  
 Angle  $COB = 76^\circ$ .

(a) Calculate angle  $ATC$ .

Answer(a) Angle  $ATC = \dots\dots\dots$  [2]

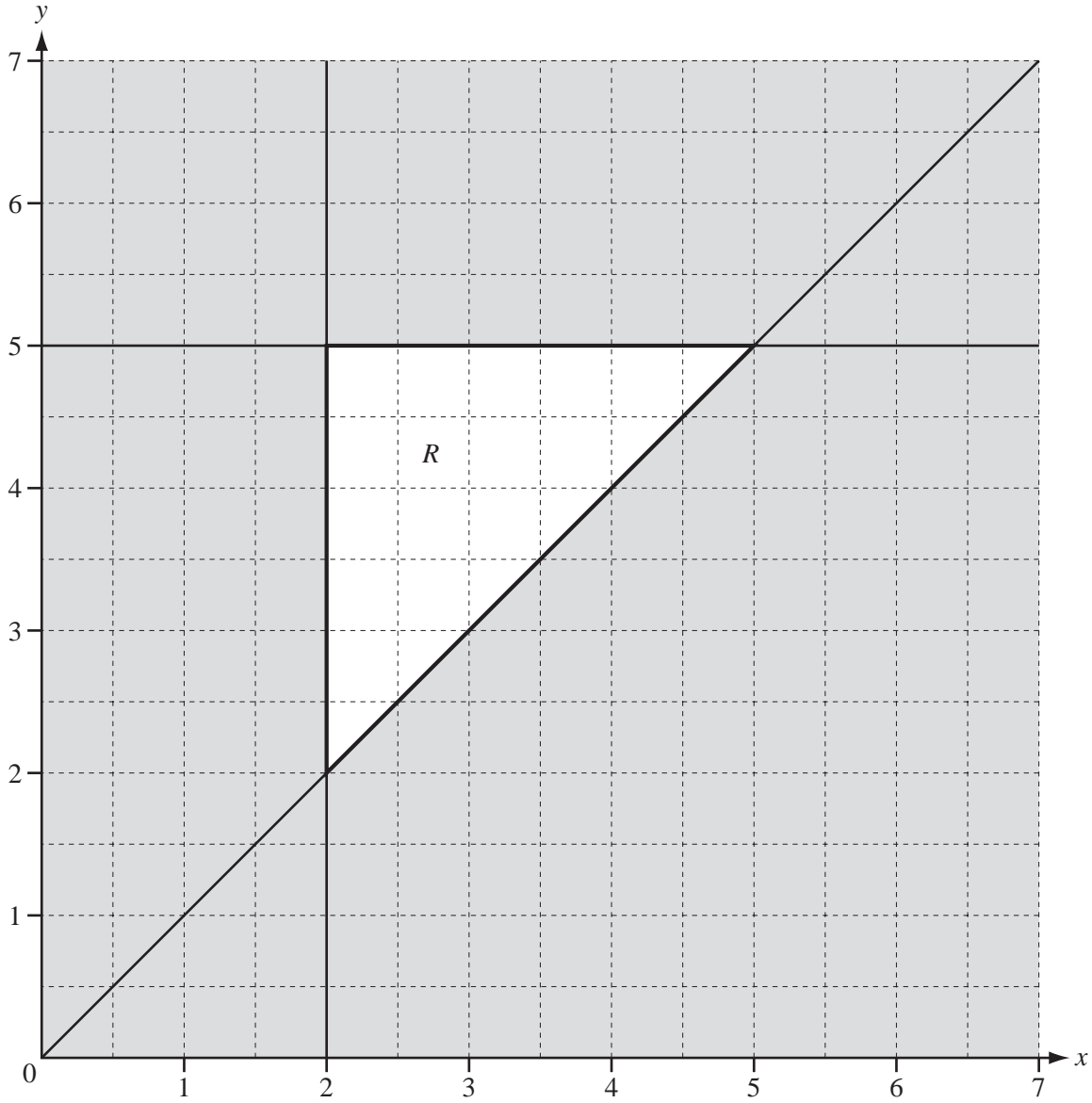
(b)  $T$  is due north of  $C$ .

Calculate the bearing of  $B$  from  $C$ .

Answer(b)  $\dots\dots\dots$  [2]

14

For  
Examiner's  
Use



The region  $R$  is bounded by three lines.

Write down the three inequalities which define the region  $R$ .

Answer .....

.....

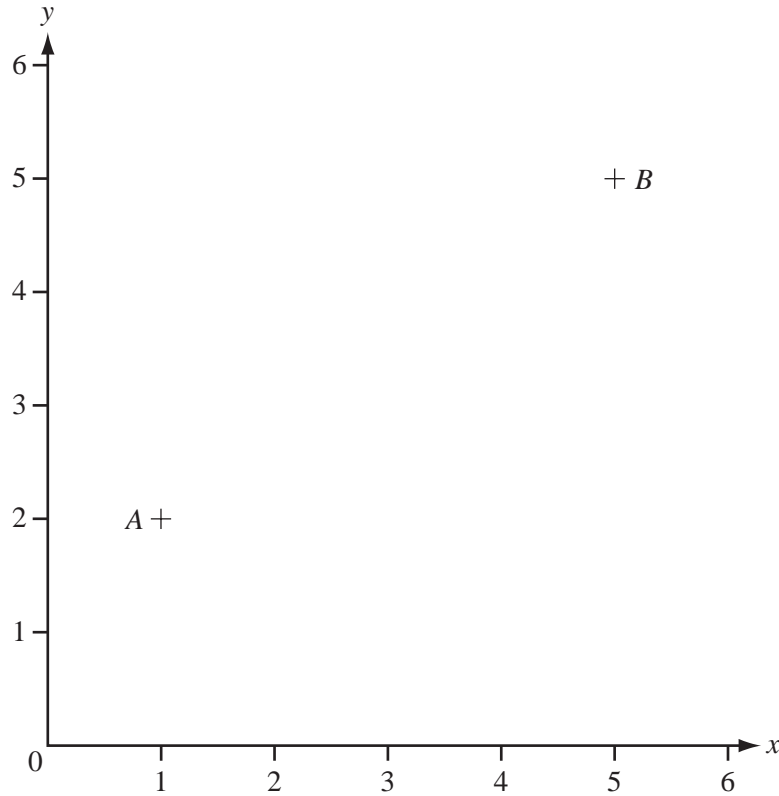
.....

[4]



15

For  
Examiner's  
Use



The points  $A(1, 2)$  and  $B(5, 5)$  are shown on the diagram .

(a) Work out the co-ordinates of the midpoint of  $AB$ .

Answer(a) ( ..... , ..... ) [1]

(b) Write down the column vector  $\vec{AB}$ .

Answer(b)  $\vec{AB} = \begin{pmatrix} \phantom{0} \\ \phantom{0} \end{pmatrix}$  [1]

(c) Using a straight edge and compasses only, draw the locus of points which are equidistant from  $A$  and from  $B$ . [2]

- 16 In a survey of 60 cars, the type of fuel that they use is recorded in the table below.

Each car only uses one type of fuel.

Petrol	Diesel	Liquid Hydrogen	Electricity
40	12	2	6

- (a) Write down the mode.

*Answer(a)* ..... [1]

- (b) Olav drew a pie chart to illustrate these figures.

Calculate the angle of the sector for Diesel.

*Answer(b)* ..... [2]

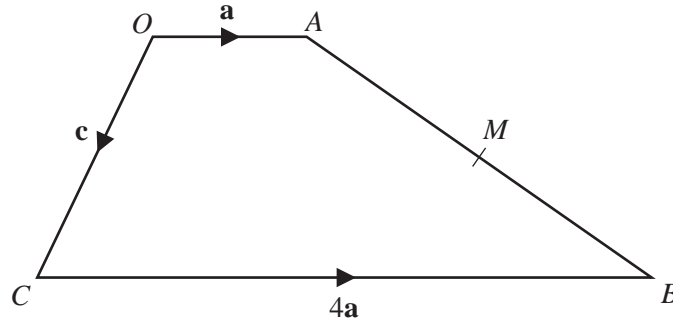
- (c) Calculate the probability that a car chosen at random uses Electricity.

Write your answer as a fraction in its simplest form.

*Answer(c)* ..... [2]

*For  
Examiner's  
Use*

17



For  
Examiner's  
Use

$O$  is the origin,  $\vec{OA} = \mathbf{a}$ ,  $\vec{OC} = \mathbf{c}$  and  $\vec{CB} = 4\mathbf{a}$ .  
 $M$  is the midpoint of  $AB$ .

(a) Find, in terms of  $\mathbf{a}$  and  $\mathbf{c}$ , in their simplest form

(i) the vector  $\vec{AB}$ ,

Answer(a)(i)  $\vec{AB} = \dots\dots\dots$  [2]

(ii) the position vector of  $M$ .

Answer(a)(ii)  $\dots\dots\dots$  [2]

(b) Mark the point  $D$  on the diagram where  $\vec{OD} = 3\mathbf{a} + \mathbf{c}$ . [2]

18

$$w = \frac{1}{\sqrt{LC}}$$

(a) Find  $w$  when  $L = 8 \times 10^{-3}$  and  $C = 2 \times 10^{-9}$ .  
 Give your answer in standard form.

Answer(a)  $w = \dots\dots\dots$  [3]

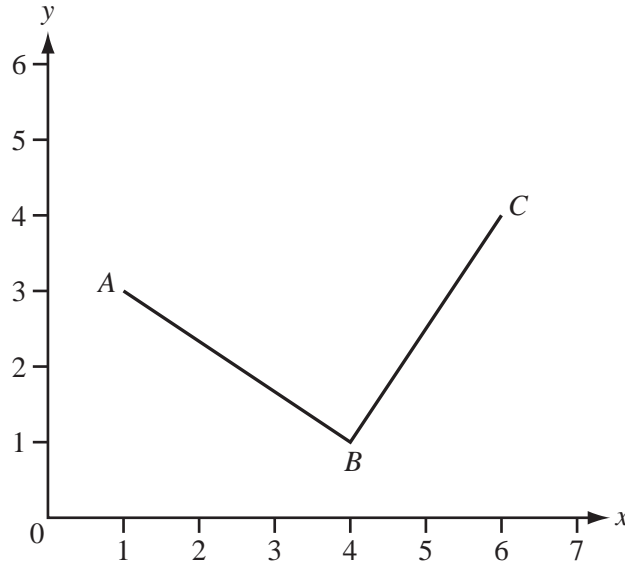
(b) Rearrange the formula to make  $C$  the subject.

Answer(b)  $C = \dots\dots\dots$  [3]

Question 19 is printed on the next page.

19

For  
Examiner's  
Use



$A(1, 3)$ ,  $B(4, 1)$  and  $C(6, 4)$  are shown on the diagram.

(a) Using a straight edge and compasses only, construct the angle bisector of angle  $ABC$ . [2]

(b) Work out the equation of the line  $BC$ .

Answer(b) ..... [3]

(c)  $ABC$  forms a right-angled isosceles triangle of area  $6.5 \text{ cm}^2$ .

Calculate the length of  $AB$ .

Answer(c)  $AB =$  ..... cm [2]

Permission to reproduce items where third-party owned material protected by copyright is included has been sought and cleared where possible. Every reasonable effort has been made by the publisher (UCLES) to trace copyright holders, but if any items requiring clearance have unwittingly been included, the publisher will be pleased to make amends at the earliest possible opportunity.

University of Cambridge International Examinations is part of the Cambridge Assessment Group. Cambridge Assessment is the brand name of University of Cambridge Local Examinations Syndicate (UCLES), which is itself a department of the University of Cambridge.